

LOC/DME I-DCU <b>110.55</b> Chan 42 (Y)	APP CRS <b>185°</b>	Rwy ldg <b>6107</b> TDZE <b>592</b> Apt Elev <b>592</b>
-----------------------------------------------	------------------------	---------------------------------------------------------------

# ILS or LOC RWY 18

PRYOR FLD RGNL (DCU)

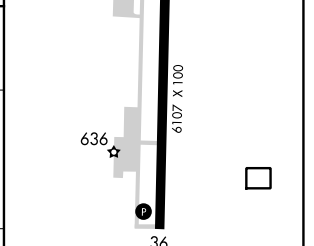
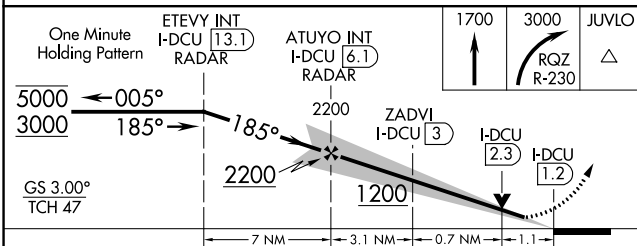
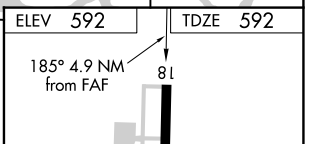
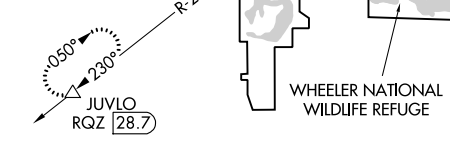
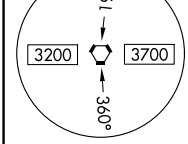
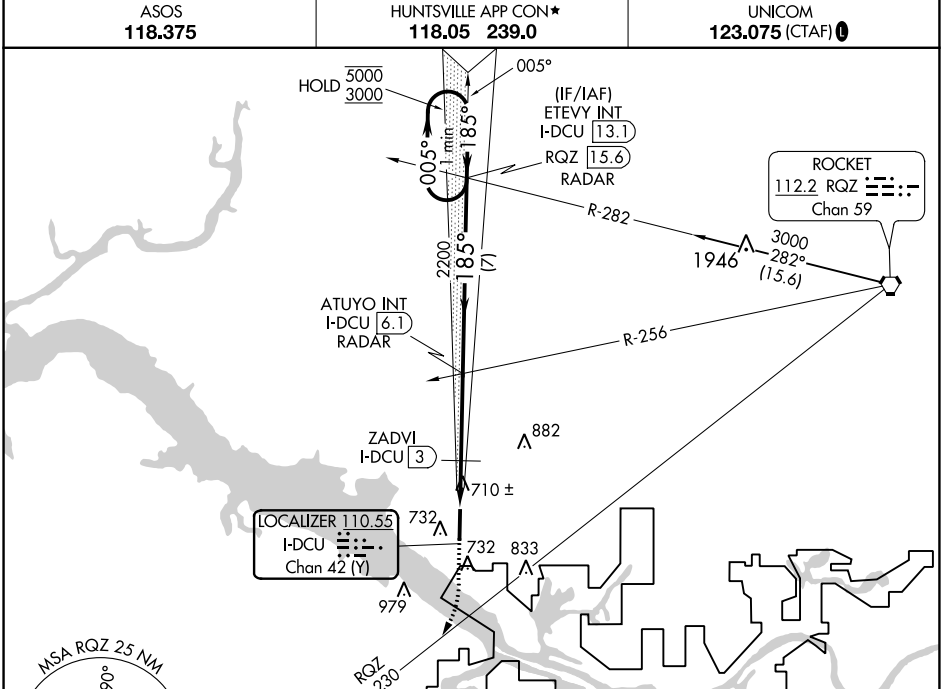
DME required.

**ASOS 118.375**

**HUNTSVILLE APP CON\* 118.05 239.0**

**UNICOM 123.075 (CTAF) 0**

MISSED APPROACH: Climb to 1700, then climbing right turn to 3000 on RQZ VORTAC R-230 to JUVLO/RQZ 28.7 DME and hold.



CATEGORY	A	B	C	D
S-ILS 18		792- <sup>3</sup> / <sub>4</sub>	200 (200- <sup>3</sup> / <sub>4</sub> )	
S-LOC 18	980-1	388 (400-1)	980-1 <sup>1</sup> / <sub>8</sub>	388 (400-1 <sup>1</sup> / <sub>8</sub> )
CIRCLING	1040-1 448 (500-1)	1060-1 468 (500-1)	1340-2 <sup>1</sup> / <sub>4</sub> 748 (800-2 <sup>1</sup> / <sub>4</sub> )	1340-2 <sup>1</sup> / <sub>2</sub> 748 (800-2 <sup>1</sup> / <sub>2</sub> )

HIRL Rwy 18-36 0				
REIL Rws 18 and 36 0				
FAF to MAP 4.9 NM				
Knots	60	90	120	150 180
Min:Sec	4:54	3:16	2:27	1:58 1:38

SE-4, 11 JUL 2024 to 08 AUG 2024

SE-4, 11 JUL 2024 to 08 AUG 2024