

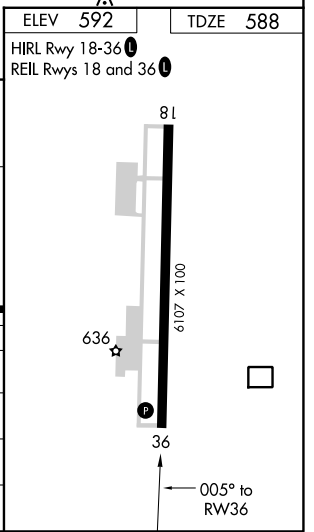
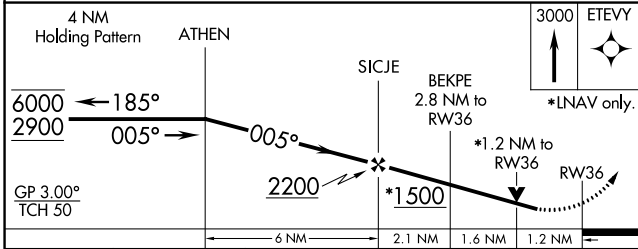
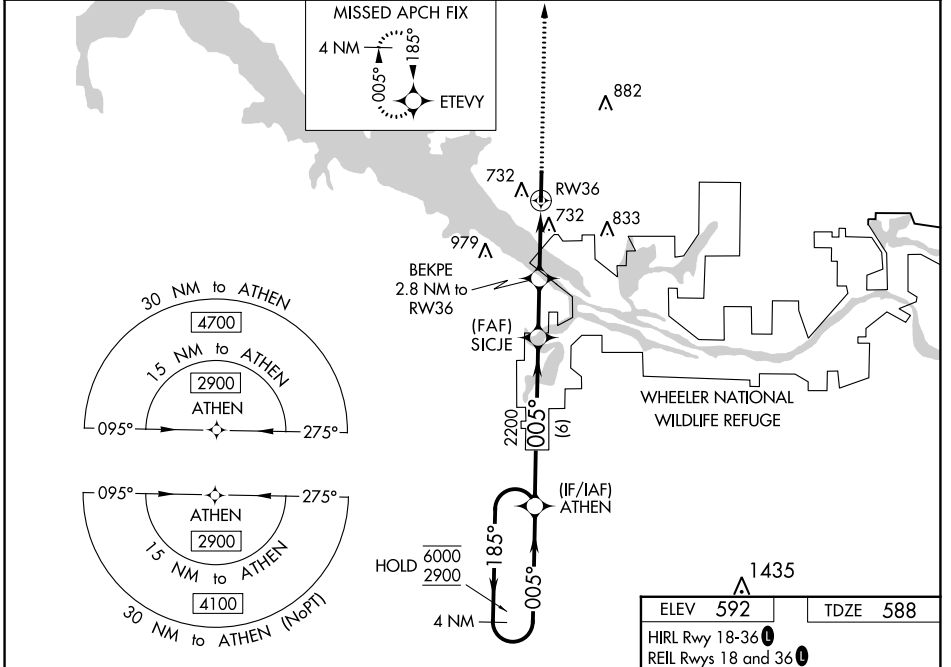
WAAS CH <b>90204</b> <b>W36A</b>	APP CRS <b>005°</b>	Rwy Idg TDZE Apt Elev	<b>6107</b> <b>588</b> <b>592</b>
--	------------------------	-----------------------------	---

# RNAV (GPS) RWY 36

PRYOR FLD RGNL (DCU)

RNP APCH.	<p><b>▼</b> Rwy 36 helicopter visibility reduction below 3/4 SM NA.  <b>▲</b> For uncompensated Baro-VNAV systems, LNAV/VNAV NA below -12°C or above 54°C.</p>	<p>MISSED APPROACH: Climb to 3000 direct ETEVY and hold.</p>

ASOS <b>118.375</b>	HUNTSVILLE APP CON ★ <b>118.05 239.0</b>	UNICOM <b>123.075 (CTAF)</b>
------------------------	---	---------------------------------



CATEGORY	A	B	C	D
LPV DA	900-1		312 (400-1)	
LNAV/VNAV DA	1041-1 3/8		453 (500-1 3/8)	
LNAV MDA	1000-1 412 (500-1)		1000-1 3/8 412 (500-1 3/8)	
<b>C</b> CIRCLING	1040-1 448 (500-1)	1060-1 468 (500-1)	1340-2 1/4 748 (800-2 1/4)	1340-2 1/2 748 (800-2 1/2)

SE-4, 11 JUL 2024 to 08 AUG 2024

SE-4, 11 JUL 2024 to 08 AUG 2024