

WAAS CH <b>45822</b> <b>W28A</b>	APP CRS <b>275°</b>	Rwy ldg TDZE Apt Elev	<b>6006</b> <b>649</b> <b>649</b>
--	------------------------	-----------------------------	---

# RNAV (GPS) RWY 28


SOUTHWEST MICHIGAN RGNL (BEH)

**RNP APCH.**

**▼**

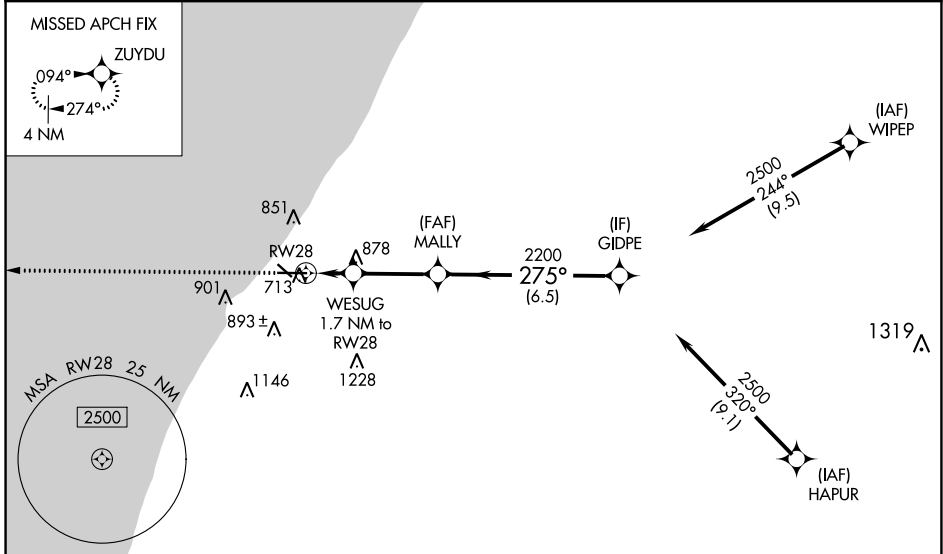
For uncompensated Baro-VNAV systems, LNAV/VNAV NA below -19°C (-2°F) or above 39°C (102°F). Circling Rwy 14, 32 NA at night.

**MALS R**

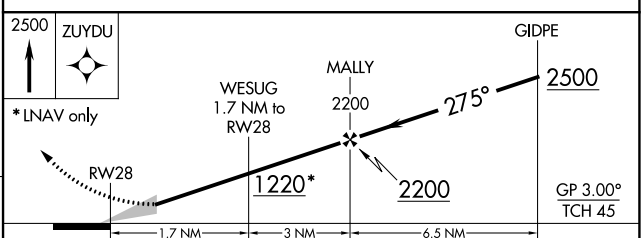
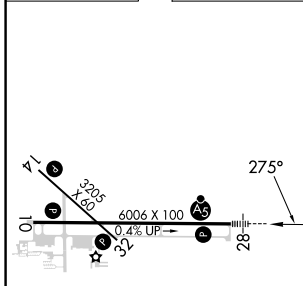



**MISSED APPROACH:** Climb to 2500 direct ZUYDU and hold.




ASOS <b>121.55</b>	SOUTH BEND APP CON* <b>118.55 257.8</b>	SOUTH BEND CLNC DEL <b>119.7</b>	UNICOM <b>123.0 (CTAF) 0</b>
-----------------------	--	-------------------------------------	---------------------------------



ELEV <b>649</b>	TDZE <b>649</b>
-----------------	-----------------



	CATEGORY	A	B	C	D
LPV	DA		849-½	200 (200-½)	
LNAV/VNAV	DA		941-½	292 (300-½)	
LNAV	MDA	1140-½	491 (500-½)	1140-1	491 (500-1)
 CIRCLING		1140-1 491 (500-1)	1160-1 511 (600-1)	1300-1¾ 651 (700-1¾)	1340-2 691 (700-2)

REIL Rwys 10, 14 and 32   
 MIRL Rwy 14-32   
 HIRL Rwy 10-28 

EC-1, 11 JUL 2024 to 08 AUG 2024

EC-1, 11 JUL 2024 to 08 AUG 2024