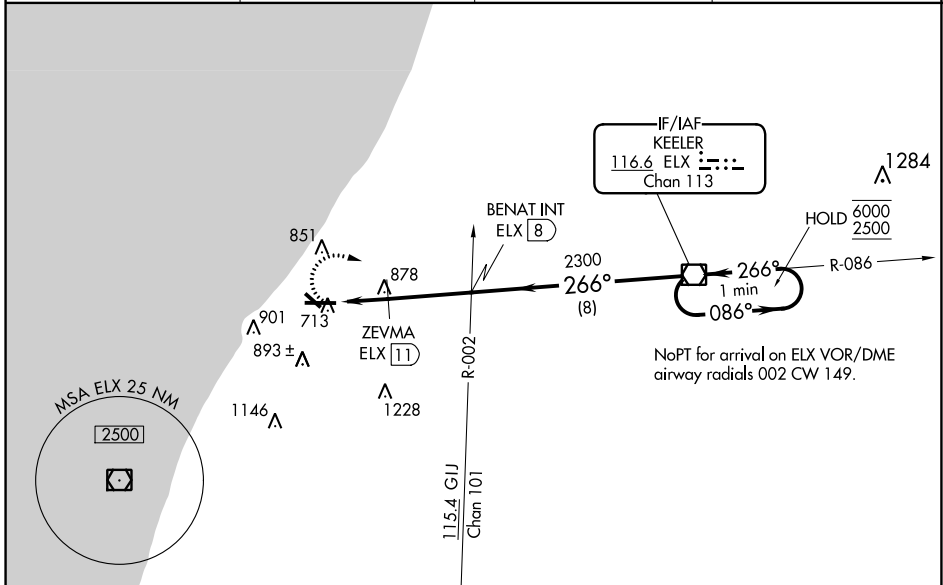


VOR/DME ELX <b>116.6</b>	APP CRS <b>266°</b>	Rwy Idg TDZE Apt Elev	<b>6006</b> <b>649</b> <b>649</b>
Chan <b>113</b>			

# VOR RWY 28

SOUTHWEST MICHIGAN RGNL (BEH)

DME required.		MALSR 	MISSED APPROACH: Climbing right turn to 2500 direct ELX VOR/DME and hold.
▼ ▲	Circling Rwy 14, 32 NA at night. For inop ALS, increase S-28 Cats A and B visibility to 1 SM. ZEVMA fix minimums: for inop ALS, increase S-28 Cats A and B visibility to 1 SM and Cats C and D visibility to 1 3/8 SM.		
ASOS <b>121.55</b>	SOUTH BEND APP CON* <b>118.55 257.8</b>	SOUTH BEND CLNC DEL <b>119.7</b>	UNICOM <b>123.0 (CTAF)</b>



EC-1, 11 JUL 2024 to 08 AUG 2024

EC-1, 11 JUL 2024 to 08 AUG 2024

ELEV 649	TDZE 649	2500	ELX	
		One Minute Holding Pattern ELX VOR/DME 6000 / 2500 086° → ← 266°		
REIL Rwys 10, 14 and 32	MIRL Rwy 14-32	HIRL Rwy 10-28	FAF to MAP 4.9 NM	
Knots	60	90	120	150
Min:Sec	4:54	3:16	2:27	1:58
	180	1:58	1:38	
CATEGORY	A	B	C	D
S-28	1300-1	651 (700-1)	1300-1 3/8	651 (700-1 3/8)
CIRCLING	1300-1	651 (700-1)	1300-1 3/4	1340-2 1/4
			651 (700-1 3/4)	691 (700-2 1/4)
ZEVMA FIX MINIMUMS				
S-28	1140-3/4	491 (500-3/4)	1140-1	491 (500-1)
CIRCLING	1140-1	511 (600-1)	1300-1 3/4	1340-2 1/4
	491 (500-1)	511 (600-1)	651 (700-1 3/4)	691 (700-2 1/4)