

LOM OS 395	APP CRS 003°	Rwy Idg 8002
		TDZE 808
		Apt Elev 808

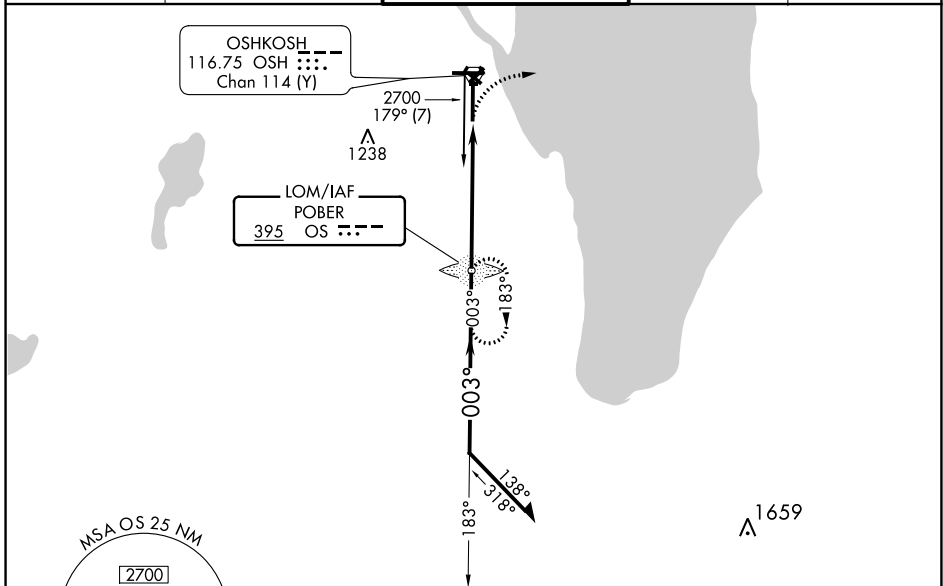
NDB RWY 36

WITTMAN RGNL (OSH)

NA When local altimeter setting not received, use Fond Du Lac altimeter setting and increase all MDA 40 feet; increase S-36 Cat C/D and Circling Cat C visibilities 1/8 mile, increase Circling Cat D visibility 1/4 mile. For inop MALSRS, increase S-36 Cat D visibility to 1/8 mile. For inop MALSRS when using Fond Du Lac altimeter setting, increase S-36 Cat D visibility to 2 miles. Circling to Rwy 5, 23, and 31 NA at night.

MALSRS
MISSED APPROACH: Climbing right turn to 3000 on heading 090° then right turn direct POBER LOM and hold.

ATIS 125.9	MILWAUKEE APP CON 127.0 263.075	OSHKOSH TOWER ★ 118.5 (CTAF) 290.9	GND CON 132.3	UNICOM 122.95
----------------------	---	--	-------------------------	-------------------------

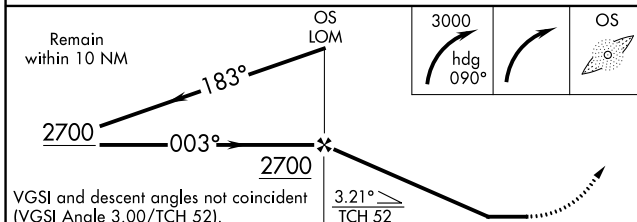
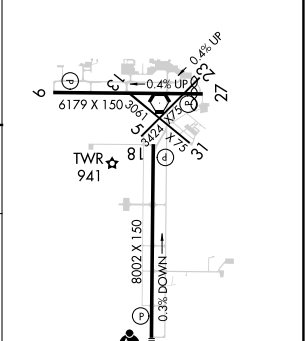


EC-3, 11 JUL 2024 to 08 AUG 2024

EC-3, 11 JUL 2024 to 08 AUG 2024



ELEV 808	D	TDZE 808
----------	----------	----------



CATEGORY	A	B	C	D
	S-36	1460/40 652 (700-3/4)	1460-1 3/8 652 (700-1 1/2)	1460-2 652 (700-1 1/2)
C CIRCLING	1460-1 652 (700-1)	1460-1 7/8 652 (700-1 1/2)	1460-2 652 (700-2)	

REIL Rwys 18 and 27 HIRL Rwys 9-27 and 18-36	FAF to MAP 5.4 NM
Knots	60 90 120 150 180
Min:Sec	5:24 3:36 2:42 2:10 1:48