

JACKSONVILLE, NORTH CAROLINA

ILS or LOC RWY 1

LOC I-NCA 111.10 Chan 48	APCH CRS 008°	Rwy Idg TDZE 4789 24 Arpt Elev 26
--	-------------------------	--

[USN]

NEW RIVER MCAS (MC CUTCHEON FLD) (KNCA)

RADAR, TACAN required. DME required.



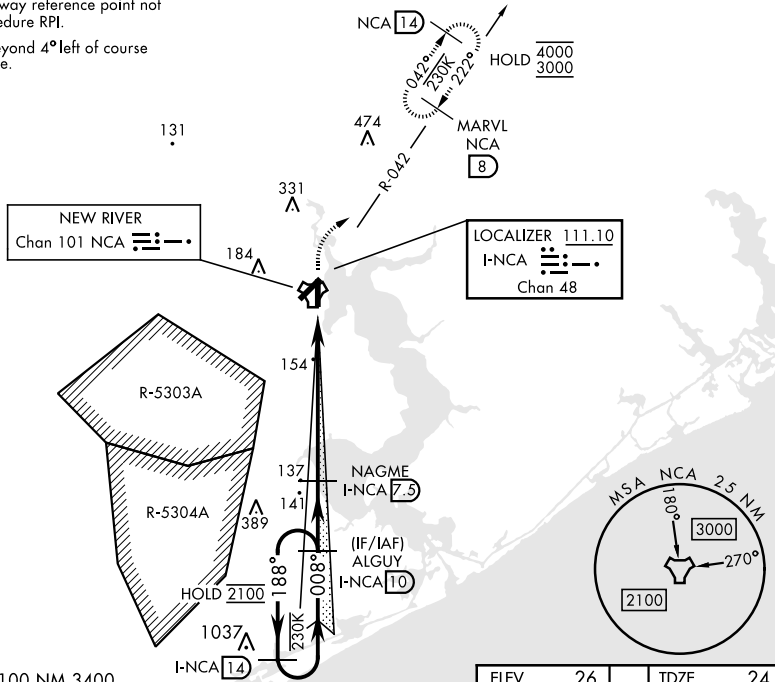
MISSED APPROACH: Climb to 500, then climbing right turn to 3000, intercept NCA R-042 to MARVL and hold, continue climb-in-hold to 3000.

*When ALS inop, increase CAT AB vis to 1 mile, CAT CD vis to 1 1/8 miles.

ATIS ★ 288.325	CHERRY POINT APP CON 119.35 377.175	TOWER ★ 134.95(CTAF) 360.2	GND CON 121.8 254.275	CLNC DEL 269.25	ASR/PAR
--------------------------	---	--------------------------------------	---------------------------------	---------------------------	---------

CAUTION: VGSI runway reference point not coincident with procedure RPI.

Rwy 1 GS unused beyond 4° left of course and 7° right of course.

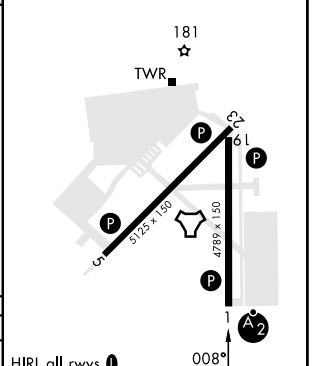
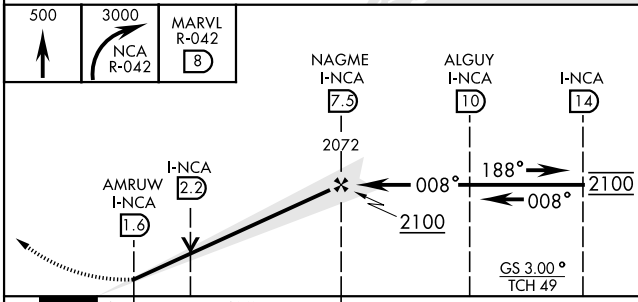


SE-2, 11 JUL 2024 to 08 AUG 2024

SE-2, 11 JUL 2024 to 08 AUG 2024

EMERG SAFE ALT 100 NM 3400

ELEV	26	TDZE	24
------	----	------	----



CATEGORY	A	B	C	D
S-ILS 1	224-3/4		200	(200-3/4)
S-LOC 1 *	420-3/4	396 (400-3/4)	420-7/8	396 (400-7/8)
CIRCLING	500-1	474 (500-1)	700-2 674 (700-2)	700-2 1/4 674 (700-2 1/4)

FAF to MAP 5.9 NM					
Knots	60	90	120	150	180
Min:Sec	5:54	3:56	2:57	2:22	1:58

JACKSONVILLE, NORTH CAROLINA

34° 43' N-77° 26' W

NEW RIVER MCAS (MC CUTCHEON FLD) (KNCA)

Amdt 4 28DEC23

ILS or LOC RWY 1