

PENSACOLA, FLORIDA

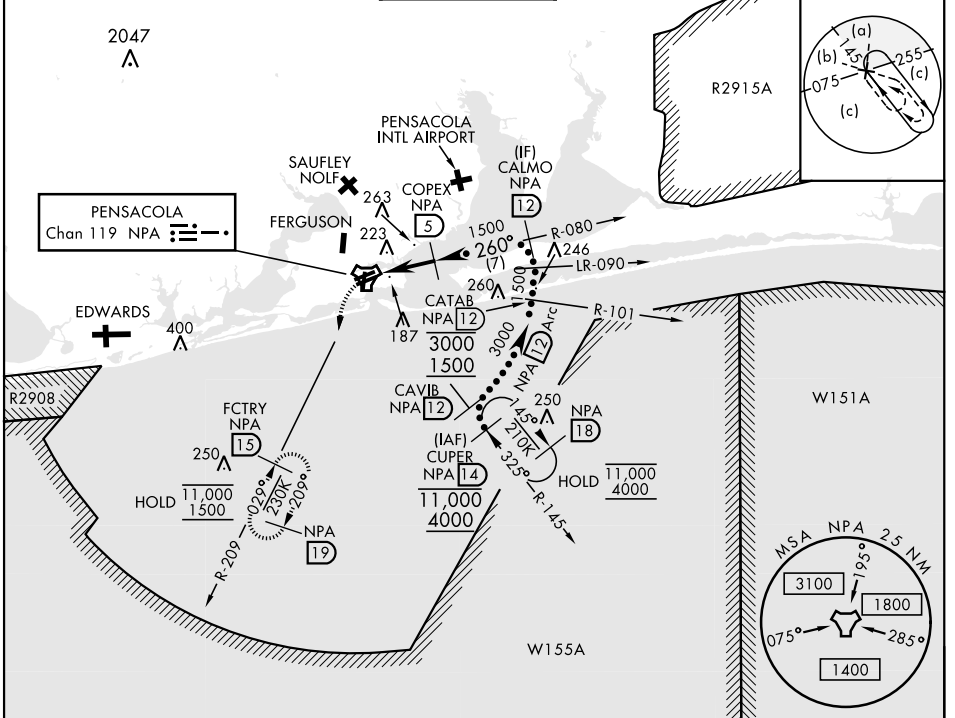
HI-TACAN Z RWY 25R

TACAN NPA Chan 119	APCH CRS 260°	Rwy Idg TDZE Arprt Elev	8001 21 28	AL-736 [USN]	PENSACOLA NAS (FORREST SHERMAN FLD) (KNPA)
-----------------------	------------------	-------------------------------	------------------	--------------	--

RADAR required.

MISSED APPROACH: Climbing left turn to 1500 via NPA TACAN R-209 to FCTRY and hold.

ATIS 124.35 266.8	PENSACOLA APP CON 120.65 270.8	SHERMAN TOWER 120.7 340.2	GND CON 121.7 336.4	CLNC DEL 134.1 268.7	ASR/ PAR
----------------------	-----------------------------------	------------------------------	------------------------	-------------------------	-------------

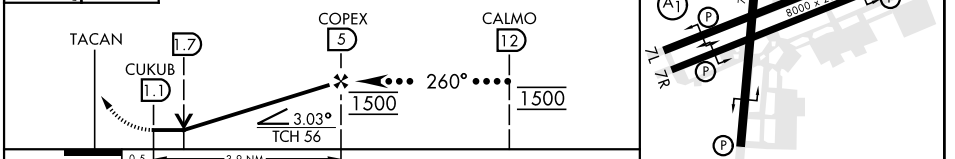
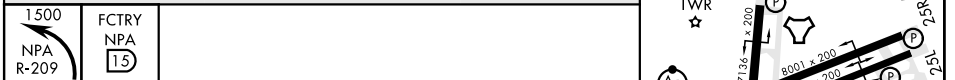


SE-3, 11 JUL 2024 to 08 AUG 2024

SE-3, 11 JUL 2024 to 08 AUG 2024

ELEV 28	TDZE 21
---------	---------

EMERG SAFE ALT 100 NM 3100



CATEGORY	C	D	E
S-25R	440-1 1/8	419 (500-1 1/8)	
CIRCLING	540-1 1/2 512 (600-1 1/2)	580-2	552 (600-2)

HIRL all Rwys
REL all Rwys

PENSACOLA, FLORIDA 30°21'N-87°19'W PENSACOLA NAS (FORREST SHERMAN FLD) (KNPA)

Orig 02DEC21

HI-TACAN Z RWY 25R