

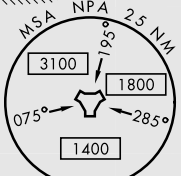
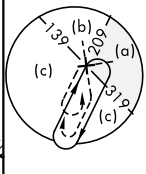
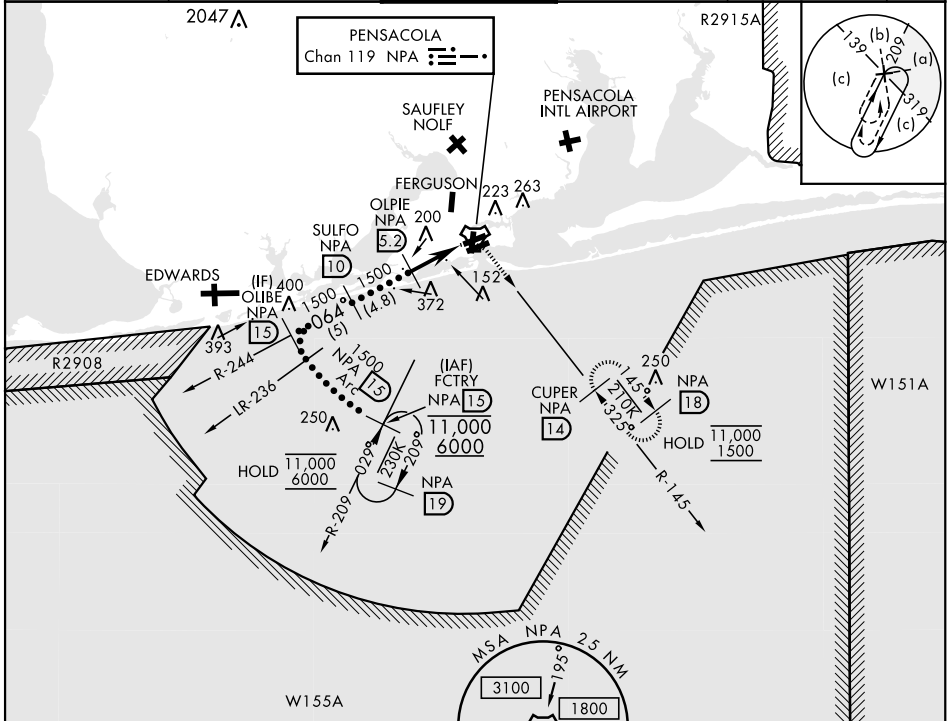
HI-TACAN Z RWY 7L

TACAN NPA Chan 119	APCH CRS 064°	Rwy ldg 8001 TDZE 23 Arprt Elev 28
-----------------------	------------------	---

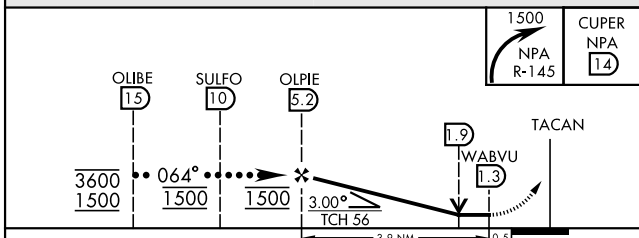
AL-736 [USN] PENSACOLA NAS (FORREST SHERMAN FLD) (KNPA)

RADAR required. * When ALS inop, increase vis to 1 1/2 miles.	ALSF-1 	MISSED APPROACH: Climbing right turn to 1500 via NPA TACAN R-145 to CUPER and hold.
--	------------	---

ATIS 124.35 266.8	PENSACOLA APP CON 120.65 270.8	SHERMAN TOWER 120.7 340.2	GND CON 121.7 336.4	CLNC DEL 134.1 268.7	ASR/ PAR
----------------------	-----------------------------------	------------------------------	------------------------	-------------------------	-------------

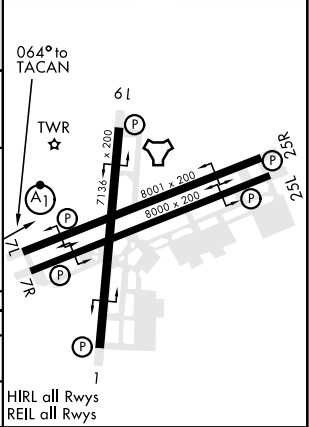


EMERG SAFE ALT 100 NM 3100



ELEV	28	TDZE	23
------	----	------	----

CATEGORY	C	D	E
S-7L *	440-3/4	417 (500-3/4)	
CIRCLING	540-1 1/2 512 (600-1 1/2)	580-2	552 (600-2)



HI-TACAN Z RWY 7L

SE-3, 11 JUL 2024 to 08 AUG 2024

SE-3, 11 JUL 2024 to 08 AUG 2024