

PENSACOLA, FLORIDA

# HI-VOR Z RWY 19

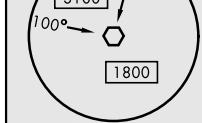
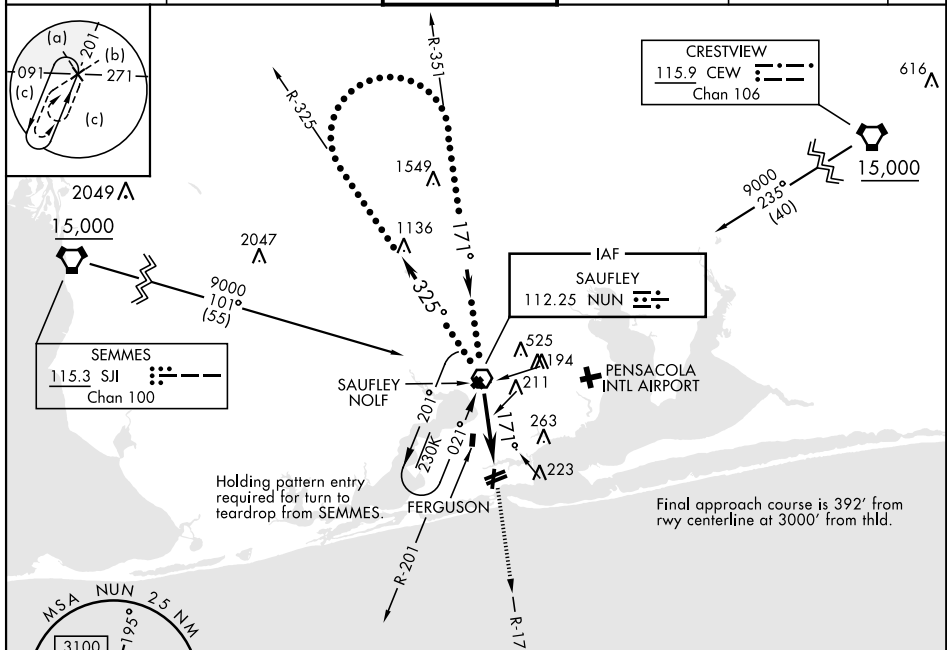
VOR NUN <b>112.25</b>	APCH CRS <b>171°</b>	Rwy Ldg 7136 TDZE 22 Arprt Elev 28	AL-736 [USN] PENSACOLA NAS (FORREST SHERMAN FLD) (KNPA)
--------------------------	-------------------------	---	---

RADAR required.

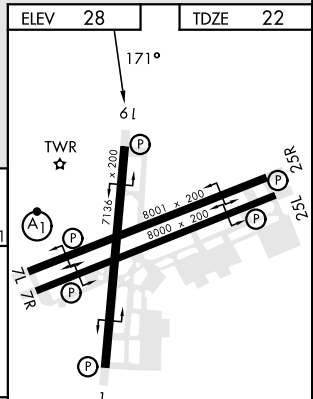
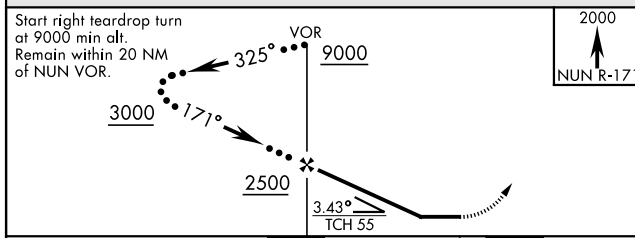
Procedure not available when Pensacola South Military Operating Area (MOA) is active.

MISSED APPROACH: Climb to 2000 via NUN VOR R-171. Expect RADAR vectors within 3 NM of MAP.

ATIS <b>124.35 266.8</b>	PENSACOLA APP CON <b>120.65 270.8</b>	SHERMAN TOWER <b>120.7 340.2</b>	GND CON <b>121.7 336.4</b>	CLNC DEL <b>134.1 268.7</b>	ASR/ PAR
-----------------------------	--	-------------------------------------	-------------------------------	--------------------------------	-------------



### EMERG SAFE ALT 100 NM 3100



CATEGORY	C	D	E
S-19	500-1 $\frac{1}{8}$	478 (500-1 $\frac{1}{8}$ )	
CIRCLING	540-1 $\frac{1}{2}$ 512 (600-1 $\frac{1}{2}$ )	580-2	552 (600-2)

HIRL all Rwys REIL all Rwys					
FAF to MAP 6.0 NM					
Knots	120	140	160	180	200
Min:Sec	3:00	2:34	2:15	2:00	1:48

PENSACOLA, FLORIDA 30°21'N-87°19'W PENSACOLA NAS (FORREST SHERMAN FLD) (KNPA)

Orig 02DEC21

# HI-VOR Z RWY 19

SE-3, 11 JUL 2024 to 08 AUG 2024

SE-3, 11 JUL 2024 to 08 AUG 2024