

PENSACOLA, FLORIDA

# ILS or RNAV (GPS) Y RWY 7L

LOC/DME I-NPA <b>109.3</b> Chan <b>119</b>	APCH CRS <b>069°</b>	Rwy Idg TDZE Arpt Elev <b>8001</b> <b>23</b> <b>28</b>
--	-------------------------	---

[USN]

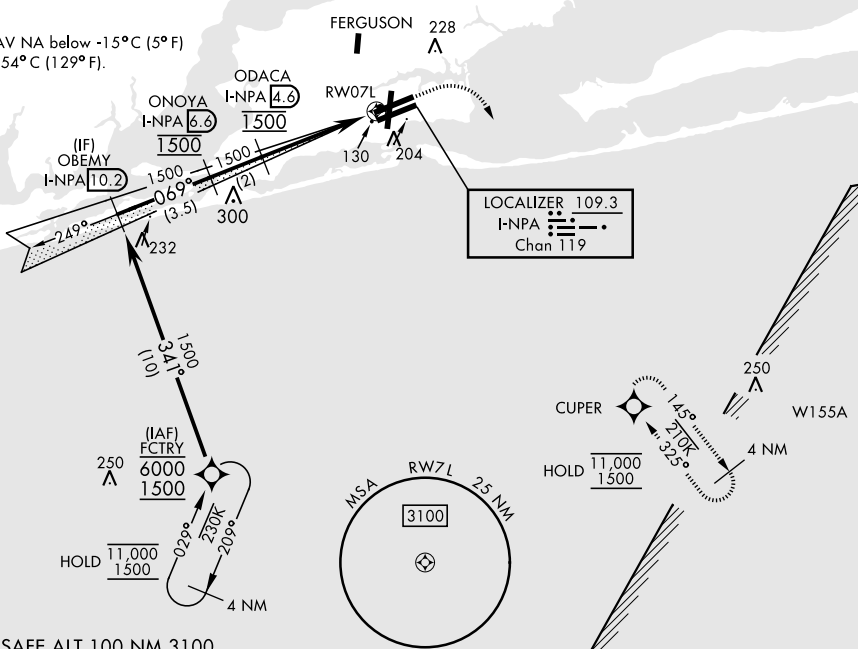
PENSACOLA NAS (FORREST SHERMAN FLD) (KNPA)

RNP APCH. RNAV1 - GPS for ILS procedure.		ALSF-1 		MISSED APPROACH: Climb to 600, then climbing right turn to 1500 direct CUPER and hold.	
RADAR required					
<p><b>▼</b> * When ALS inop, increase vis to 3/4 mile.</p>					
ATIS <b>124.35 266.8</b>	APP CON <b>120.65 270.8</b>	SHERMAN TOWER <b>120.7 340.2</b>	GND CON <b>121.7 336.4</b>	CLNC DEL <b>134.1 268.7</b>	ASR/PAR

\*\*When ALS inop, increase CAT ABC vis to 3/4 mile; CAT DE vis to 7/8 mile.  
\*\*\* When ALS inop, increase vis to 1 mile.

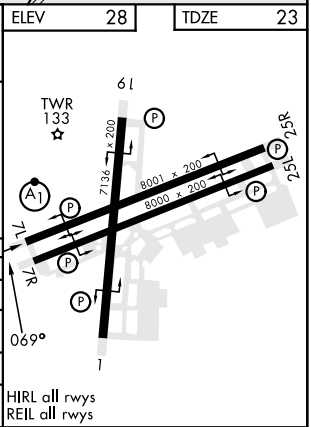
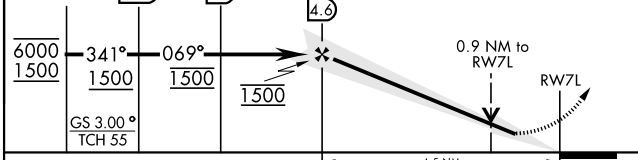
PENSACOLA INTL AIRPORT

Baro VNAV NA below -15°C (5°F) or above 54°C (129°F).



EMERG SAFE ALT 100 NM 3100

FCTRY	OBEMY I-NPA 10.2	ONOCA I-NPA 6.6	ODACA I-NPA 4.6	600	1500	CUPER	ELEV 28	TDZE 23
-------	------------------	-----------------	-----------------	-----	------	-------	---------	---------



CATEGORY	A	B	C	D	E
S-ILS 7L *	223-1/2		200	(200-1/2)	
LNAV/VNAV DA**	274-1/2	251 (300-1/2)	280-1/2	291-1/2	295-1/2
			257 (300-1/2)	268 (300-1/2)	272 (300-1/2)
LNAV MDA***	380-1/2		357 (400-1/2)	380-5/8	
			357 (400-5/8)		
<b>C</b> CIRCLING	520-1	492 (500-1)	540-1 1/2	600-2	640-2 1/4
			512 (600-1 1/2)	572 (600-2)	612 (700-2 1/4)

HIRT all rwys  
REIL all rwys

PENSACOLA, FLORIDA  
Amd 5 11JUL24

30°21'N-87°19'W

PENSACOLA NAS (FORREST SHERMAN FLD) (KNPA)

# ILS or RNAV (GPS) Y RWY 7L

SE-3, 11 JUL 2024 to 08 AUG 2024

SE-3, 11 JUL 2024 to 08 AUG 2024