

PENSACOLA, FLORIDA

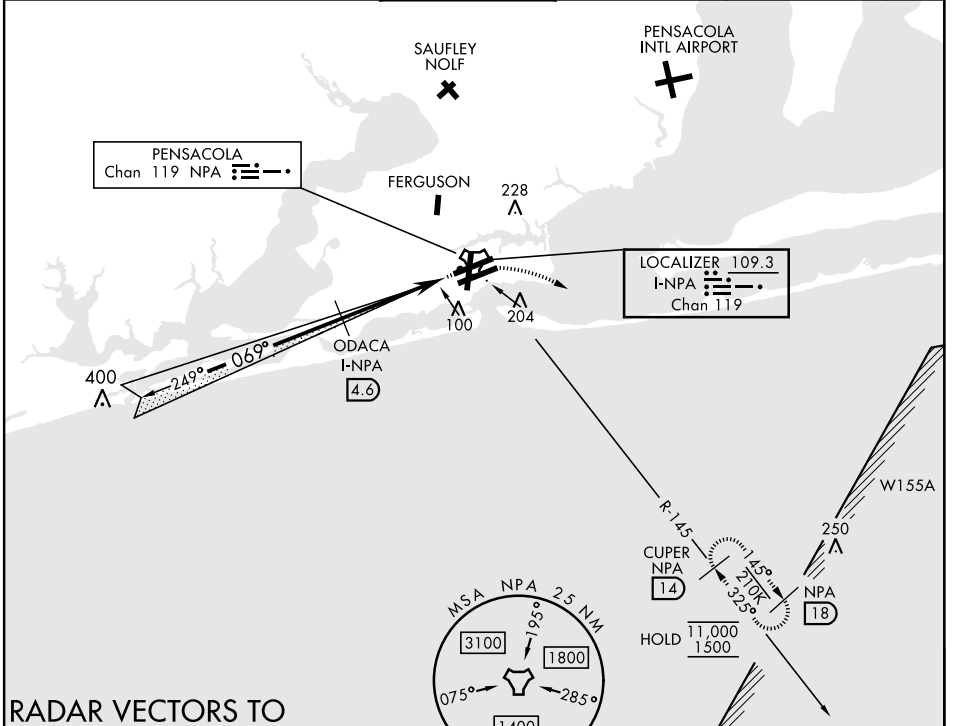
# ILS Z or LOC Z RWY 7L

LOC/DME I-NPA <b>109.3</b> Chan <b>119</b>	APCH CRS <b>069°</b>	Rwy Idg TDZE Arprt Elev <b>8001</b> <b>23</b> <b>28</b>
--	-------------------------	--

[USN] PENSACOLA NAS (FORREST SHERMAN FLD) (KNPA)

TACAN, DME required. * When ALS inop, increase vis to 3/4 mile. ** When ALS inop, increase vis to 1 mile	ALS-1 	MISSED APPROACH: Climb to 600. Then climbing right turn to 1500 via NPA R-145 to CUPER and hold.
--	-----------	--

ATIS <b>124.35 266.8</b>	APP CON <b>120.65 270.8</b>	SHERMAN TOWER <b>120.7 340.2</b>	GND CON <b>121.7 336.4</b>	CLNC DEL <b>134.1 268.7</b>	ASR/ PAR
-----------------------------	--------------------------------	-------------------------------------	-------------------------------	--------------------------------	-------------

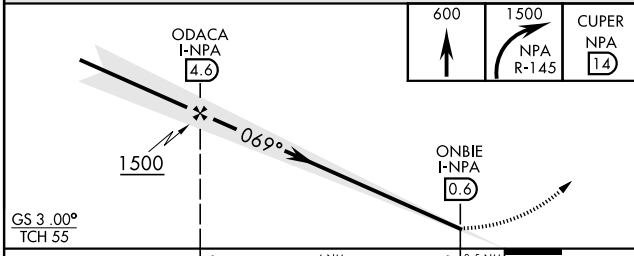


SE-3, 11 JUL 2024 to 08 AUG 2024

SE-3, 11 JUL 2024 to 08 AUG 2024

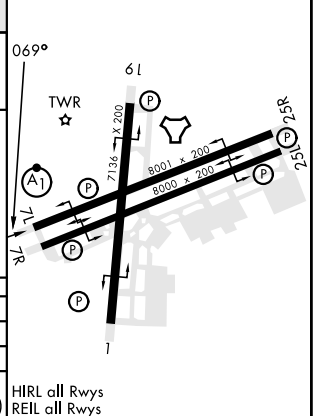
## RADAR VECTORS TO FINAL APPROACH REQUIRED

EMERG SAFE ALT 100 NM 3100



GS 3.00° TCH 55	4 NM					0.5 NM
CATEGORY	A	B	C	D	E	
S-ILS 7L*		223-1/2	200	(200-1/2)		
S-LOC 7L**		360-1/2	337	(400-1/2)		
CIRCLING	520-1	492 (500-1)	540-1 1/2 (512 (600-1 1/2))	600-2 (572 (600-2))	640-2 1/4 (612 (700-2 1/4))	

ELEV	28	TDZE	23
------	----	------	----



PENSACOLA, FLORIDA

30° 21' N - 87° 19' W

PENSACOLA NAS (FORREST SHERMAN FLD) (KNPA)

Amdt 4 18APR24

# ILS Z or LOC Z RWY 7L