

PENSACOLA, FLORIDA

RNAV (GPS) RWY 25L

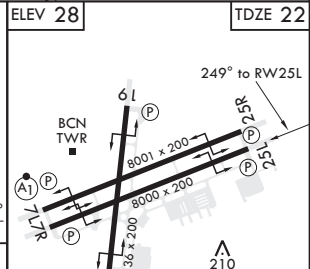
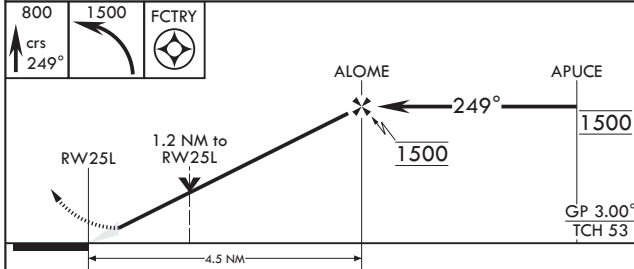
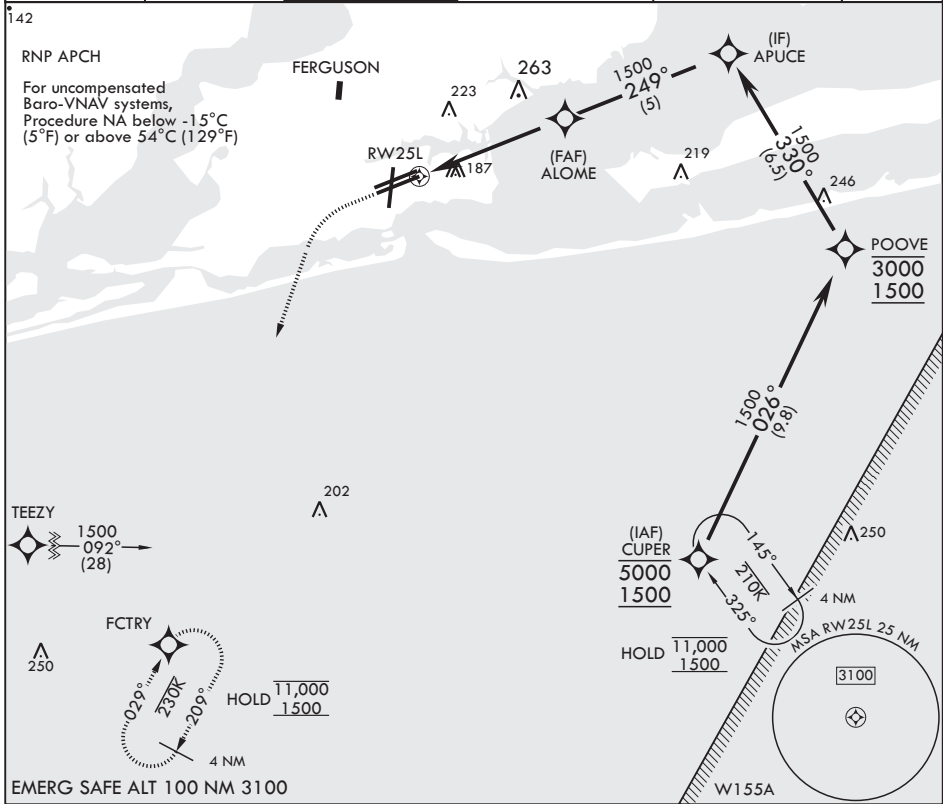
APCH CRS 249°	Rwy Idg 22	TDZE 28
	Arprt Elev 28	

AL-736 (USN)

PENSACOLA NAS (FORREST SHERMAN FLD) (KNPA)

					MISSED APPROACH: Climb to 800 then climbing left turn to 1500 direct FCTRY and hold.	
--	--	--	--	--	--	--

ATIS 124.35 266.8	APP CON 120.65 270.8	SHERMAN TOWER 120.7 340.2	SHERMAN GND CON 121.7 336.4	SHERMAN CLNC DEL 134.1 268.7	ASR/PAR
-----------------------------	--------------------------------	-------------------------------------	---------------------------------------	--	---------



CATEGORY	A	B	C	D
LNNAV/VNAV DA	440-1 $\frac{1}{8}$		418	(500-1 $\frac{1}{8}$)
LNNAV MDA	440-1	418 (500-1)	440-1 $\frac{1}{8}$ 418 (500-1 $\frac{1}{8}$)	580-2
CIRCLING	520-1	492 (500-1)	540-1 $\frac{1}{2}$ 512 (600-1 $\frac{1}{2}$)	552 (600-2)

PENSACOLA, FLORIDA 30°21'N - 87°19'W PENSACOLA NAS (FORREST SHERMAN FLD) (KNPA)

Amdt 3 02DEC21

RNAV (GPS) RWY 25L

SE-3, 11 JUL 2024 to 08 AUG 2024

SE-3, 11 JUL 2024 to 08 AUG 2024