

PENSACOLA, FLORIDA

RNAV (GPS) RWY 7R

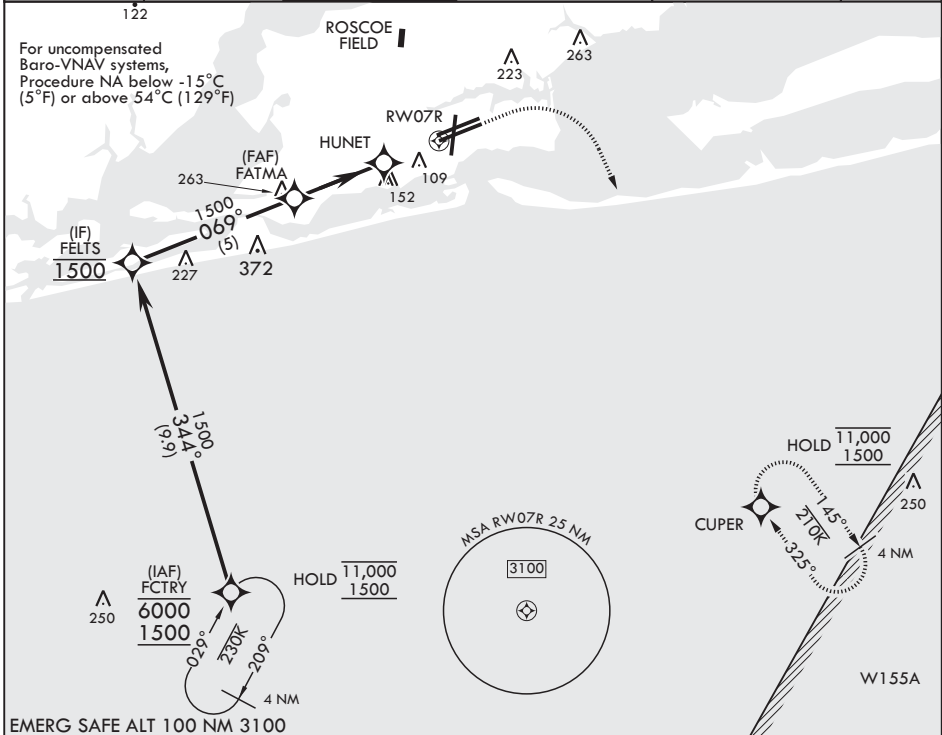
APCH CRS	Rwy Idg	8000
069°	TDZE	25
	Arprt Elev	28

AL-736 (USN)

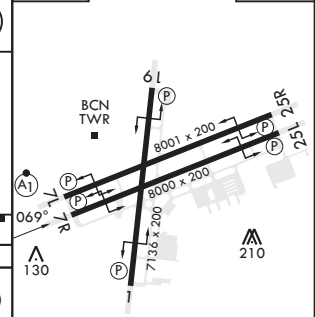
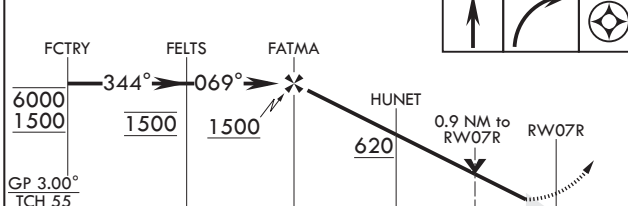
PENSACOLA NAS (FORREST SHERMAN FLD) (KNPA)

RNP APCH	MISSED APPROACH: Climb to 800 then climbing right turn to 1500 direct CUPER and hold.
RADAR required	

ATIS	APP CON	SHERMAN TOWER	SHERMAN GND CON	SHERMAN CLNC DEL	ASR/PAR
124.35 266.8	120.65 270.8	120.7 340.2	121.7 336.4	134.1 268.7	



800	1500	CUPER	ELEV 28	TDZE 25
-----	------	-------	---------	---------



CATEGORY	A	B	C	D	E
LNAV/VNAV DA	275-¾ 250 (300-¾)	280-¾ 255 (300-¾)	288-7/8 263 (300-7/8)	299-7/8	274 (300-7/8)
LNAV MDA	380-1		355	(400-1)	
C CIRCLING	520-1	492 (500-1)	540-1½ 512 (600-1½)	580-2 552 (600-2)	

ELEV	130
------	-----

HIRL all Rwys
REIL all Rwys

PENSACOLA, FLORIDA

30°21'N - 87°19'W PENSACOLA NAS (FORREST SHERMAN FLD) (KNPA)

Amdt 3 03NOV22

RNAV (GPS) RWY 7R

SE-3, 11 JUL 2024 to 08 AUG 2024

SE-3, 11 JUL 2024 to 08 AUG 2024