

PENSACOLA, FLORIDA

# TACAN Y RWY 7L

TACAN NPA Chan <b>119</b>	APCH CRS <b>064°</b>	Rwy Idg TDZE Arprt Elev	<b>8001</b> <b>23</b> <b>28</b>
------------------------------	-------------------------	-------------------------------	---------------------------------------

AL-736 [USN]

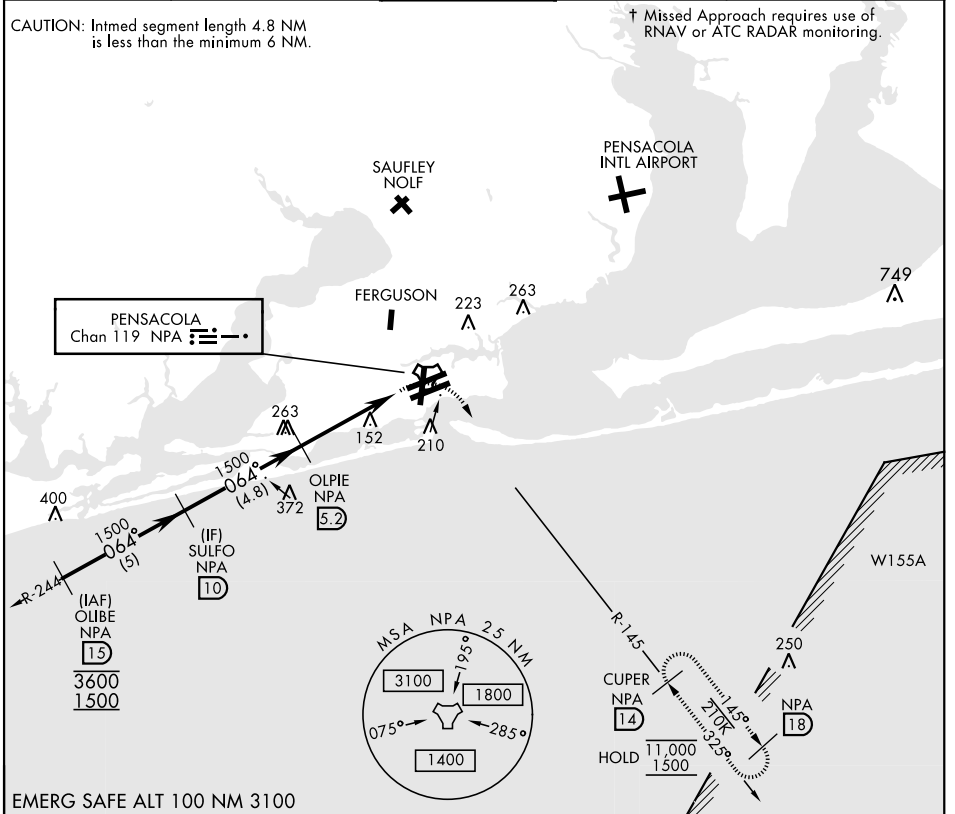
PENSACOLA NAS (FORREST SHERMAN FLD) (KNPA)

RADAR required.  
 ▼ \* When ALS inop, increase CAT AB vis to 1 mile, CAT CDE vis to 1 1/8 miles.



† MISSED APPROACH: Climbing right turn to 1500 via NPA TACAN R-145 to CUPER and hold.

ATIS <b>124.35 266.8</b>	PENSACOLA APP CON <b>120.65 270.8</b>	SHERMAN TOWER <b>120.7 340.2</b>	GND CON <b>121.7 336.4</b>	CLNC DEL <b>134.1 268.7</b>	ASR/PAR
-----------------------------	--	-------------------------------------	-------------------------------	--------------------------------	---------



SE-3, 11 JUL 2024 to 08 AUG 2024

SE-3, 11 JUL 2024 to 08 AUG 2024

EMERG SAFE ALT 100 NM 3100

			ELEV 28	TDZE 23	
CATEGORY	A	B	C	D	E
S-7L *	440-1/2	417 (500-1/2)	440-3/4	417 (500-3/4)	
CIRCLING	520-1	492 (500-1)	540-1 1/2 512 (600-1 1/2)	580-2	552 (600-2)

PENSACOLA, FLORIDA 30°21'N-87°19'W PENSACOLA NAS (FORREST SHERMAN FLD) (KNPA)

Orig 02DEC21

# TACAN Y RWY 7L

HIRL all Rwys  
REIL all Rwys