

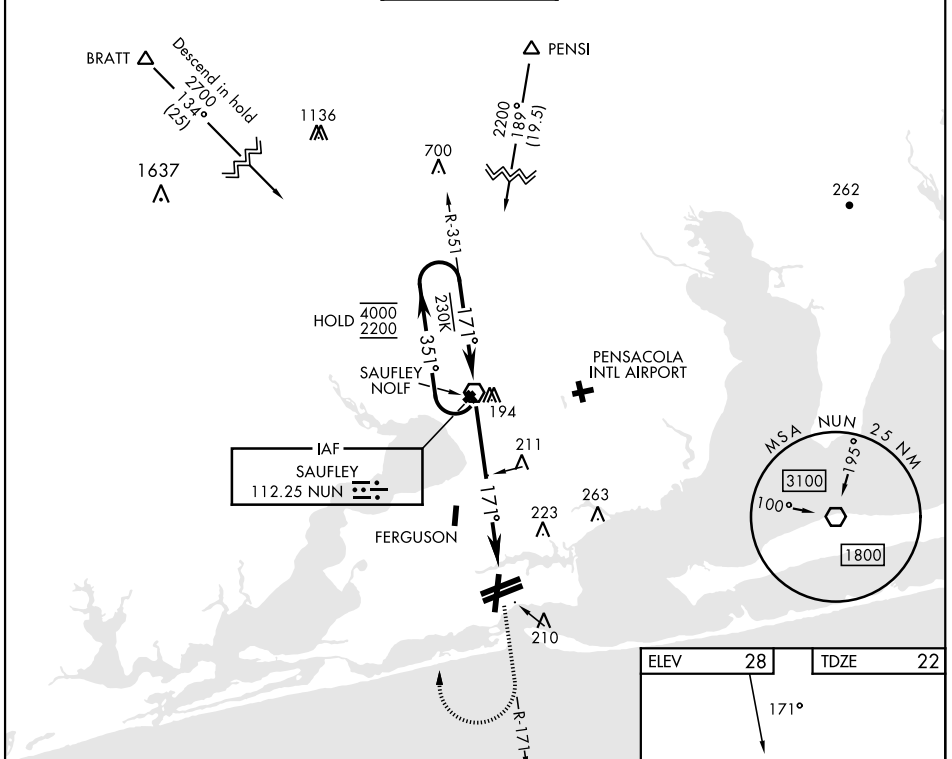
# VOR Y RWY 19

VOR NUN <b>112.25</b>	APCH CRS <b>171°</b>	Rwy Ldg TDZE Arprt Elev <b>7136</b> <b>22</b> <b>28</b>
--------------------------	-------------------------	--

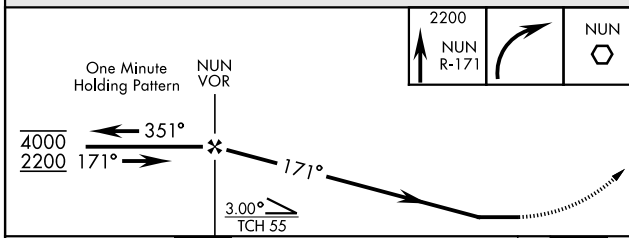
[USN] PENSACOLA NAS (FORREST SHERMAN FLD) (KNPA)

**▼** MISSED APPROACH: Climb to 2200 via NUN R-171. Then turn right direct NUN VOR and hold. Remain within 15 NM of NUN.

ATIS <b>124.35 266.8</b>	PENSACOLA APP CON <b>120.65 270.8</b>	SHERMAN TOWER <b>120.7 340.2</b>	GND CON <b>121.7 336.4</b>	CLNC DEL <b>134.1 268.7</b>	ASR/ PAR
-----------------------------	--	-------------------------------------	-------------------------------	--------------------------------	-------------



EMERG SAFE ALT 100 NM 3100



CATEGORY	A	B	C	D
S-19	500-1 478 (500-1)		500-1½ 478 (500-1½)	
<b>C</b> CIRCLING	520-1 492 (500-1)		540-1½ 512 (600-1½)	580-2 552 (600-2)

ELEV	28	TDZE	22
------	----	------	----

The diagram shows the intersection of RWY 19 and RWY 25R. It includes a Tower (TWR) and various navigation aids. Altitudes are marked at 61, 7136 + 200, 8001 + 200, and 8000 + 200. A scale bar shows 1 NM.

HIRL all Rwys					
REIL all Rwys					
FAF to MAP 6.0 NM					
Knots	60	90	120	150	180
Min:Sec	6:00	4:00	3:00	2:24	2:00

# VOR Y RWY 19

SE-3, 11 JUL 2024 to 08 AUG 2024

SE-3, 11 JUL 2024 to 08 AUG 2024