

# ILS or LOC RWY 25

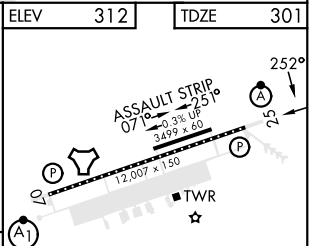
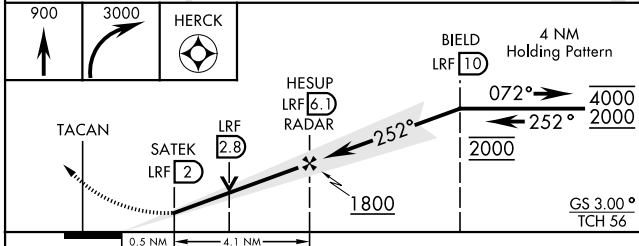
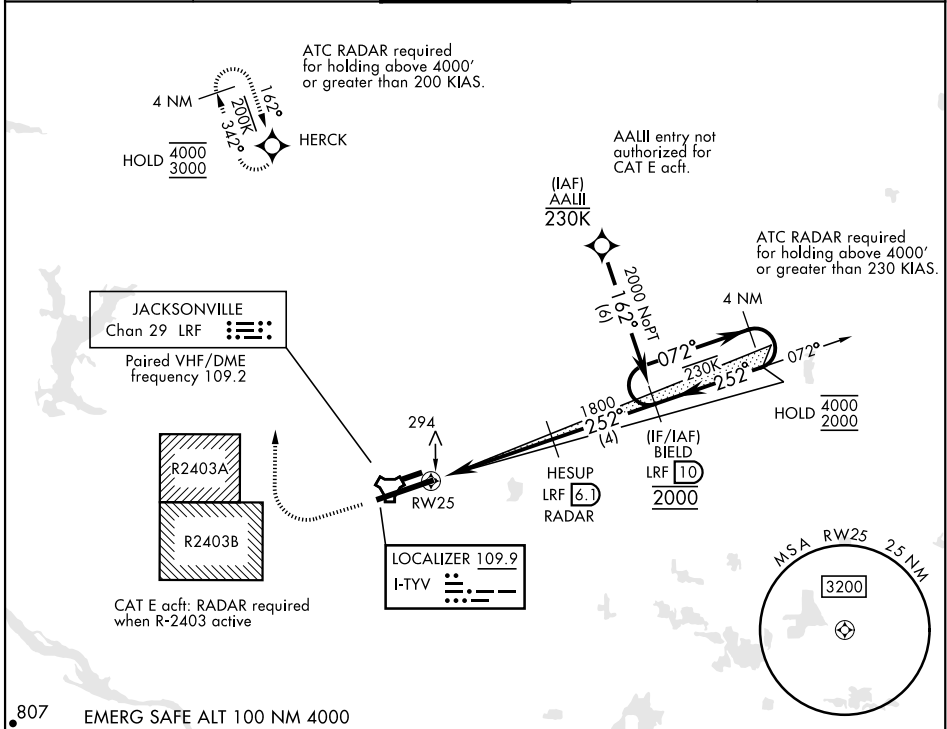
LOC I-TYV <b>109.9</b>	APCH CRS <b>252°</b>	Rwy ldg <b>12,007</b> TDZE <b>301</b> Arpt Elev <b>312</b>
---------------------------	-------------------------	--

AL-738 [USAF]

LITTLE ROCK AFB (KLRF)

RNP APCH: RNAV1 - GPS or RADAR required. *When TDZL/CL inop, increase RVR to 24. RVR 18 still authorized with use of FD, AP, or HUD to DA. When ALS inop, increase RVR to 40, vis to ¾ mile. ** When ALS inop, increase CAT AB RVR to 55, vis to 1 mile, CAT CDE vis to 1½ miles. *** Circling not authorized S of Rwy 7-25.		ALSF-2 	MISSED APPROACH: Climb to 900 then climbing right turn to 3000 direct HERCK and hold as published.  ALTERNATE MISSED APPROACH: Climbing to 3000 fly runway heading until LRF 2 DME, then turn right heading 360°, EFC from ATC.
--	--	------------	---

ATIS ★ <b>119.175 251.1</b>	APP CON <b>119.5 306.2</b>	TOWER <b>120.6 269.075</b>	GND CON <b>132.8 275.8</b>	CLNC DEL <b>253.5</b>
--------------------------------	-------------------------------	-------------------------------	-------------------------------	--------------------------



CATEGORY	A	B	C	D	E
S-ILS 25*	501/18		200	(200-½)	
S-LOC 25**	760/24	459 (500-½)	760/45	459	(500-¾)
CIRCLING ***	780-1 468 (500-1)	920-1 608 (700-1)	920-1¾ 608 (700-1¾)	1040-2¼ 728 (800-2¼)	1040-2½ 728 (800-2½)

HIRL Rwy 07-25 TDZL/CL Rwy 25					
FAF to MAP 4.1 NM					
Knots	60	90	120	150	180
Min:Sec	4:06	2:44	2:03	1:38	1:22

# ILS or LOC RWY 25

SC-1, 11 JUL 2024 to 08 AUG 2024

SC-1, 11 JUL 2024 to 08 AUG 2024