

JACKSONVILLE, ARKANSAS

RNAV (GPS) RWY 7

LITTLE ROCK AFB (KLRF)

WAAS CH 97202 W07A	APCH CRS 072°	Rwy ldg TDZE Arpt Elev	12,007 310 312
--------------------------	------------------	------------------------------	----------------------

-(USAF)

RNP APCH-GPS

ALSF-1

MISSED APPROACH: Climb to 1000 then climb left turn to 3000 direct HERCK and hold.

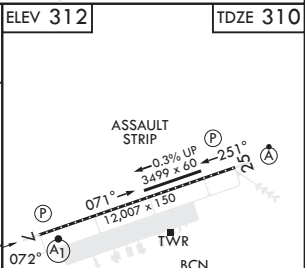
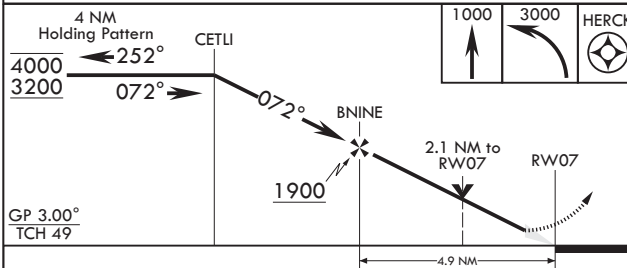
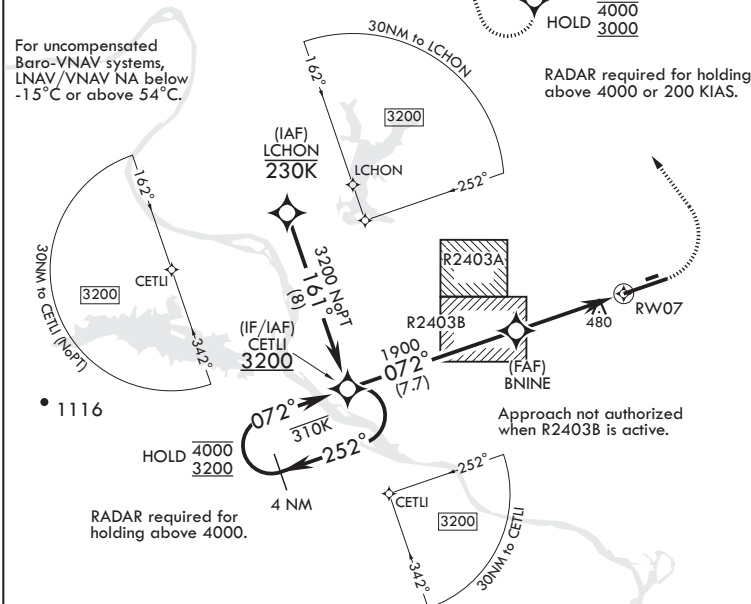
* When ALS inop, increase RVR to 40, vis to 3/4 mile.
** When ALS inop, increase vis to 1 3/8 miles.



ATIS* 119.175 251.1	APP CON/DEP CON 119.5 306.2	TOWER 120.6 269.075	GND CON 132.8 275.8	CLNC DEL 253.5
------------------------	--------------------------------	------------------------	------------------------	-------------------

*** When ALS inop, increase CAT AB RVR to 55, vis to 1 mile; CAT CD vis to 1 7/8 miles.
**** Circling not authorized S of Rwy 7-25

ALTERNATE MISSED APPROACH: Climb to 3000, fly runway heading until 2 DME then left turn heading 360°, expect RADAR vectors from ATC.



CATEGORY	A	B	C	D
LPV DA*	510/24	200	(200-1/2)	
LNAV/VNAV DA**	791/50	481	(500-1)	
LNAV MDA***	980/24 670 (700-1/2)	980-1 1/2 670 (700-1 1/2)		
CIRCLING****	980-1 668 (700-1)	980-1 1/8 668 (700-1 1/4)	1040-2 1/4 728 (800-2 1/4)	

HIRL Rwy 7-25 TDZL/CL Rwy 25

JACKSONVILLE, ARKANSAS

34°55'N - 92°09'W

LITTLE ROCK AFB (KLRF)

Orig 11JUL24

RNAV (GPS) RWY 7

SC-1, 11 JUL 2024 to 08 AUG 2024

SC-1, 11 JUL 2024 to 08 AUG 2024