

LOC I-PWA 110.15	APP CRS 175°	Rwy Idg 6844
		TDZE 1291
		Apt Elev 1300

ILS or LOC RWY 17L

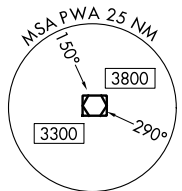
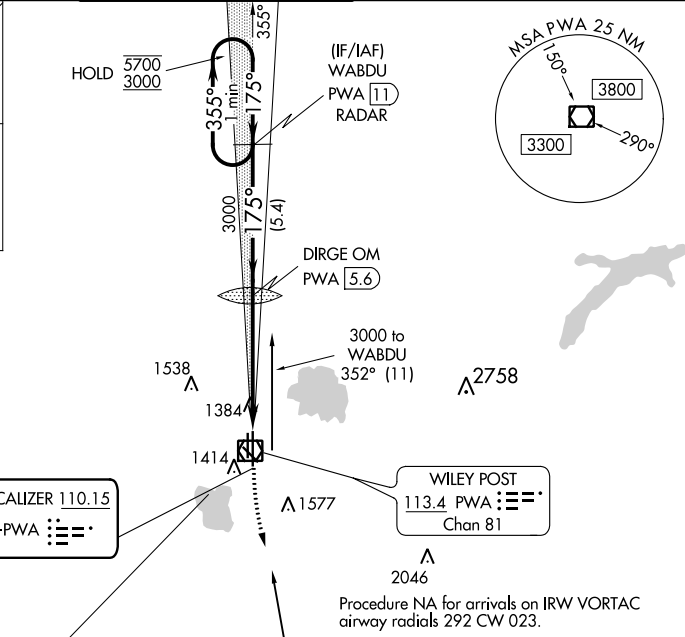
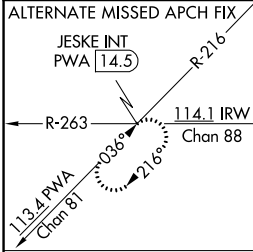
WILEY POST (PWA)

DME or RADAR required.



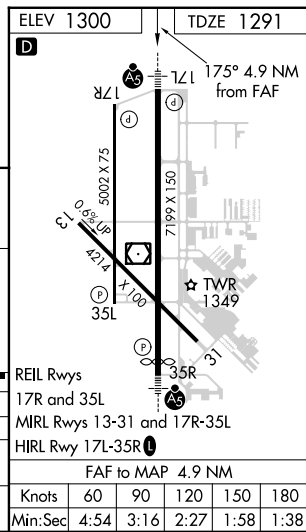
MISSED APPROACH: Climb to 1800 then climbing left turn to 3000 direct IRW VORTAC and hold.

ATIS 128.725	OKC CITY APP CON 124.6 266.8	WILEY POST TOWER * 126.9 (CTAF) 0 306.9	GND CON 121.7	UNICOM 122.95
------------------------	--	--	-------------------------	-------------------------



Procedure NA for arrivals on IRW VORTAC airway radials 292 CW 023.

One Minute Holding Pattern	WABDU PWA (11) RADAR	DIRGE OM PWA (5.6)	1800	3000	IRW
5700 ← 355°	175° →	2904	PWA (1.6)	PWA (0.7)	
3000		3000			
GS 3.00° TCH 54					
	5.4 NM	4 NM	0.9 NM		
CATEGORY	A	B	C	D	
S-ILS 17L		1491-1/2	200 (200-1/2)		
S-LOC 17L	1640-1/2	349 (400-1/2)	1640-5/8	349 (400-5/8)	
CIRCLING	1780-1	480 (500-1)	1880-1/2	1880-2	
			580 (600-1/2)	580 (600-2)	



SC-1, 11 JUL 2024 to 08 AUG 2024

SC-1, 11 JUL 2024 to 08 AUG 2024