

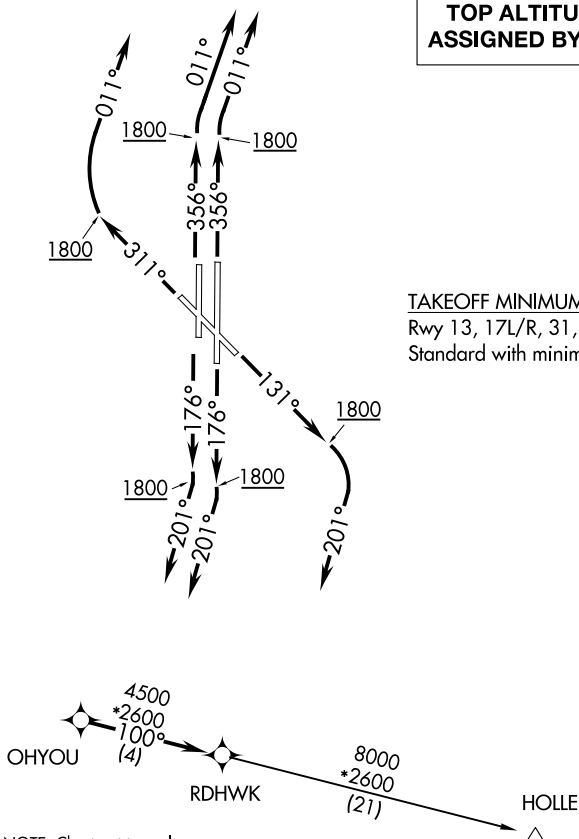
**TOP ALTITUDE:  
ASSIGNED BY ATC**

ATIS  
128.725  
GND CON  
121.7  
WILEY POST TOWER★  
126.9 306.9  
OKE CITY DEP CON  
124.6 266.8 (South)  
124.2 336.4 (North)

NOTE: RADAR required.  
NOTE: DME/DME/IRU or  
GPS required.  
NOTE: RNAV 1.

TAKEOFF MINIMUMS:

Rwy 13, 17L/R, 31, 35L/R:  
Standard with minimum climb of 500' per NM to 2100.



SC-1, 11 JUL 2024 to 08 AUG 2024

SC-1, 11 JUL 2024 to 08 AUG 2024

NOTE: Chart not to scale.

**DEPARTURE ROUTE DESCRIPTION**

- TAKEOFF RWY 13: Climb heading 131° to 1800, then right turn heading 201° or as assigned by ATC, expect RADAR vectors to OHYOU, thence . . .
- TAKEOFF RWYS 17L/R: Climb on heading 176° to 1800, then right turn heading 201° or as assigned by ATC, expect RADAR vectors to OHYOU, thence . . .
- TAKEOFF RWY 31: Climb on heading 311° to 1800, then right turn heading 011° or as assigned by ATC, expect RADAR vectors to OHYOU, thence . . .
- TAKEOFF RWY 35L: Climb on heading 356° to 1800, then heading 011° or as assigned by ATC, expect RADAR vectors to OHYOU, thence . . .
- TAKEOFF RWY 35R: Climb on heading 356° to 1800, then right turn heading 011° or as assigned by ATC, expect RADAR vectors to OHYOU, thence . . .

. . . on track 100° to RDHWK, then on (transition). Maintain 3000 or as assigned by ATC. Expect filed altitude 10 minutes after departure.

HOLLE TRANSITION (RDHWK3.HOLLE):