

APP CRS 203°	Rwy Idg 3604
	TDZE 591
	Apt Elev 597

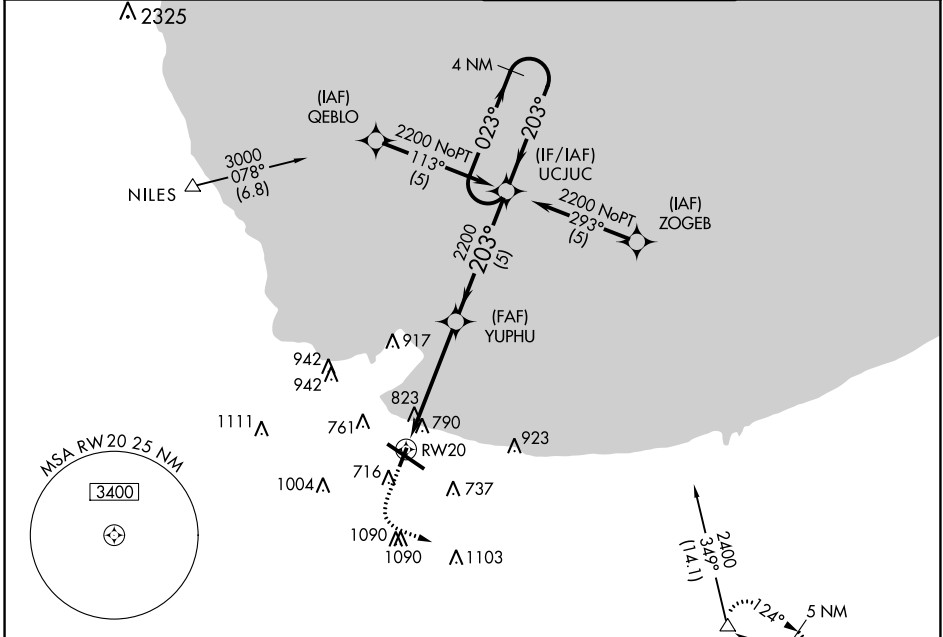
RNAV (GPS) RWY 20

GARY/CHICAGO INTL (GYY)

GPS or RNP-0.3 required.
DME/DME RNP-0.3 NA.

MISSED APPROACH: Climb to 1500 then climbing left turn to 2400 direct HALIE WP and hold.

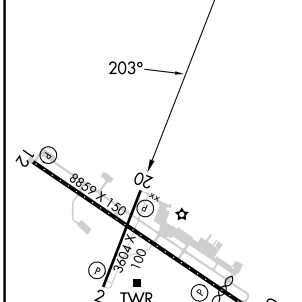
ATIS 134.575	CHICAGO APP CON 133.1 285.6	GARY TOWER ★ 125.6 (CTAF) 1	GND CON 121.9
------------------------	---------------------------------------	---------------------------------------	-------------------------



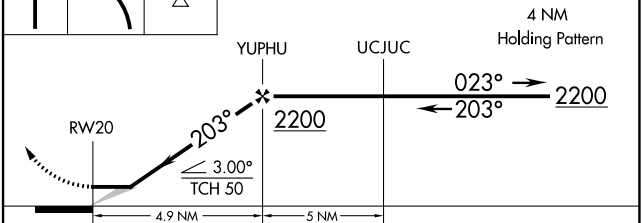
EC-2, 11 JUL 2024 to 08 AUG 2024

EC-2, 11 JUL 2024 to 08 AUG 2024

ELEV 597	D	TDZE 591
----------	----------	----------



1500 2400 HALIE VGSI and descent angles not coincident (VGSI Angle 3.00/TCH 42).



CATEGORY	A	B	C	D
GLS PA DA	NA			
LNAV/VNAV DA	NA			
LNAV MDA	1080-1 489 (500-1)	1080-1¼ 489 (500-1¼)	1080-1½ 489 (500-1½)	1080-1½ 489 (500-1½)
CIRCLING	1140-1 543 (600-1)	1180-1 583 (600-1)	1400-2¼ 803 (900-2¼)	1420-2¾ 823 (900-2¾)

REIL Rwy 2, 12 and 20 **1**
 HIRL Rwy 12-30 **1**
 MIRL Rwy 2-20 **1**