

WAAS CH 69219 W04A	APP CRS 041°	Rwy Idg TDZE Apt Elev	5001 270 288
--	------------------------	-----------------------------	---

RNAV (GPS) RWY 4

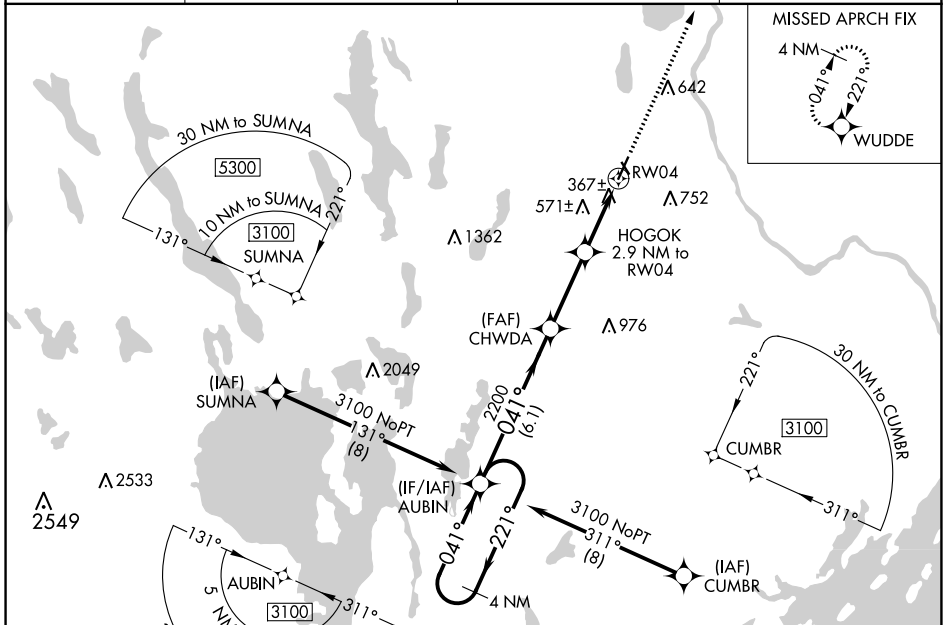
AUBURN/LEWISTON MUNI (LEW)

⚠ Circling to Rwy 17, 22, 35 NA at night. For uncompensated Baro-VNAV systems, LNAV/VNAV NA below -16°C (4°F) or above 54°C (130°F). DME/DME RNP-0.3 NA. For inop ALS, increase visibility LNAV/VNAV all Cats to 1 3/8 SM, LNAV Cat A/B to 1 SM and Cat C/D to 1 3/8 SM. Rwy 04 helicopter visibility reduction below 3/4 SM NA.

MALS

MISSED APPROACH:
Climb to 3100 direct WUDD and hold.

AWOS-3PT 118.025	PORTLAND APP CON ★ 125.5 353.9	CLNC DEL 124.05	UNICOM 122.8 (CTAF)
----------------------------	--	---------------------------	-------------------------------



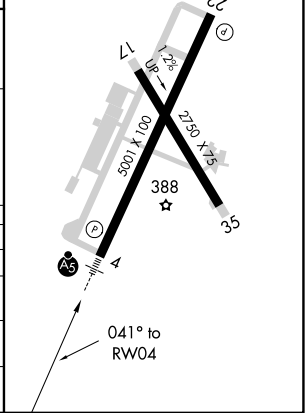
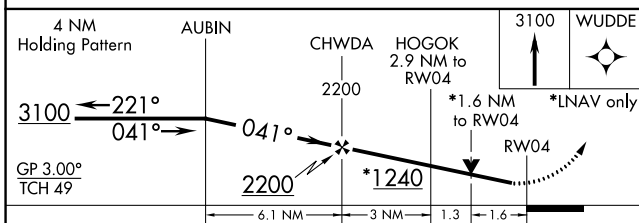
MISSED APRCH FIX
4 NM

WUDD

NE-1, 11 JUL 2024 to 08 AUG 2024

NE-1, 11 JUL 2024 to 08 AUG 2024

ELEV 288	TDZE 270
REIL Rwy 22	
HIRL Rwy 4-22	
MIRL Rwy 17-35	



CATEGORY	A	B	C	D
LPV DA		470-1/2	200 (200-1/2)	
LNAV/VNAV DA		780-1	510 (500-1)	
LNAV MDA	840-3/4	570 (600-3/4)	840-1 1/4	570 (600-1 1/4)
C CIRCLING	840-1 552 (600-1)	920-1 632 (700-1)	1060-2 1/4 772 (800-2 1/4)	1120-2 3/4 832 (900-2 3/4)