

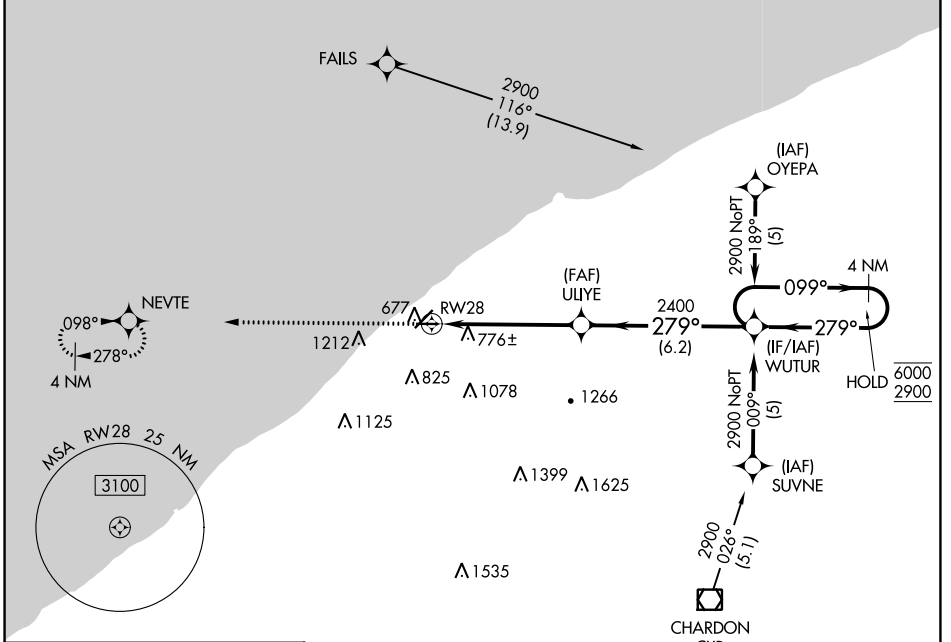
APP CRS	Rwy Idg	3148
279°	TDZE	626
	Apt Elev	626

RNAV (GPS) RWY 28

LAKE COUNTY EXEC (LNN)

RNP APCH - GPS.	MISSED APPROACH: Climb to 2300 direct NEVTE and hold.
Rwy 28 helicopter visibility reduction below 3/4 SM NA.	

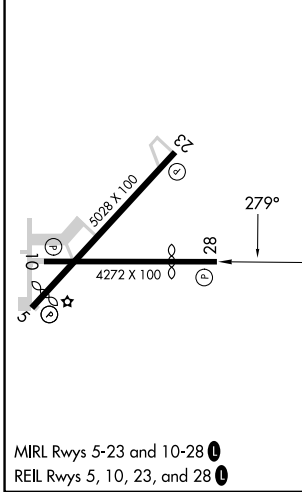
AWOS-3PT 119.225	CLEVELAND APP CON 125.35 346.325	UNICOM 122.725 (CTAF) 0
----------------------------	--	-----------------------------------



EC-2, 11 JUL 2024 to 08 AUG 2024

EC-2, 11 JUL 2024 to 08 AUG 2024

ELEV 626	TDZE 626
----------	----------



2300	NEVTE	VGSI and descent angles not coincident (VGSI Angle 3.50/TCH 26).	WUTUR	4 NM Holding Pattern
			ULIYE	
		1.6 NM to RWY 28	2400	6000
		≤ 3.04° TCH 40		2900
		1.6 NM	3.8 NM	6.2 NM
CATEGORY	A	B	C	D
LNAV MDA	1260-1	634 (700-1)	1260-1 3/4 634 (700-1 3/4)	NA
CIRCLING	1260-1	634 (700-1)	1520-2 3/4 894 (900-2 3/4)	NA

WILLOUGHBY, OHIO
 MIRL Rwy 5-23 and 10-28
 REL Rwy 5, 10, 23, and 28

41°41'N-81°23'W

LAKE COUNTY EXEC (LNN)

RNAV (GPS) RWY 28