

(KALAE1.KALAE) 21056

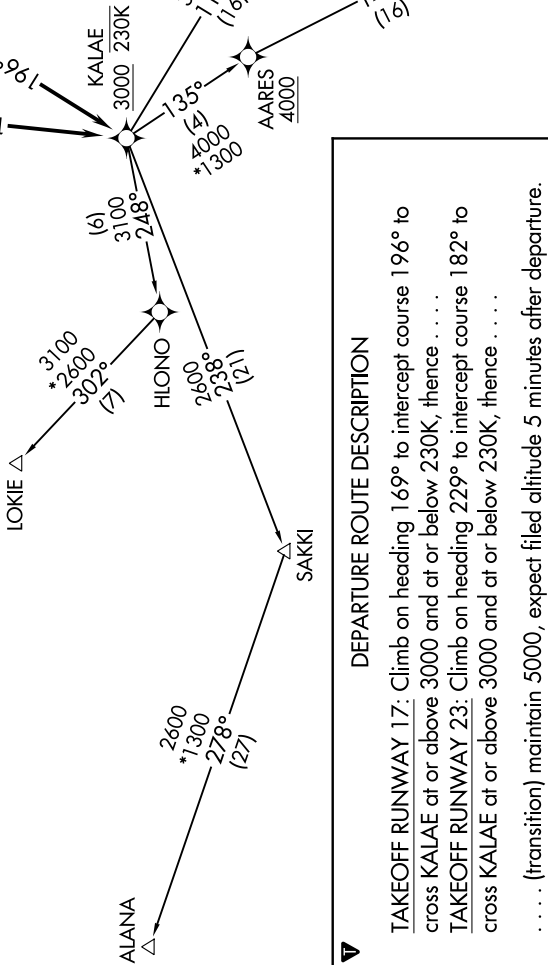
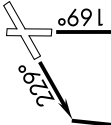
KALAE ONE DEPARTURE (RNAV)

AL-759 (FAA)

MOLOKAI (MKK) (PHMK)

KAUNAKAKAI, HAWAII

ATIS
128.2
GND CON
121.9
MOLOKAI TOWER*
125.7 306.2
HCF CENTER
124.1 317.5



**TOP ALTITUDE:
5000**

- NOTE: RNAV 1.
- NOTE: GPS required.
- NOTE: RADAR required.
- TAKEOFF MINIMUMS
- Rwys 5, 35: NA: Air Traffic.
- Rwy 17: Standard with minimum climb of 500' per NM to 3000.
- Rwy 23: Standard with minimum climb of 415' per NM to 1900.

DEPARTURE ROUTE DESCRIPTION

TAKEOFF RUNWAY 17: Climb on heading 169° to intercept course 196° to cross KALAE at or above 3000 and at or below 230K, thence

TAKEOFF RUNWAY 23: Climb on heading 229° to intercept course 182° to cross KALAE at or above 3000 and at or below 230K, thence

. . . . (transition) maintain 5000, expect filed altitude 5 minutes after departure.

- ALANA TRANSITION (KALAE1..ALANA)
- EELIO TRANSITION (KALAE1..EELIO)
- LANAI TRANSITION (KALAE1..LNY)
- LOKIE TRANSITION (KALAE1..LOKIE)

NOTE: Chart not to scale.

PAC, 11 JUL 2024 to 05 SEP 2024

PAC, 11 JUL 2024 to 05 SEP 2024

KALAE ONE DEPARTURE (RNAV)

(KALAE1.KALAE) 25FEB21

KAUNAKAKAI, HAWAII

MOLOKAI (MKK) (PHMK)