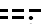



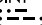
HCF CENTER
119.5 225.4
ATIS
128.6
MAUI TOWER*
118.7 279.6

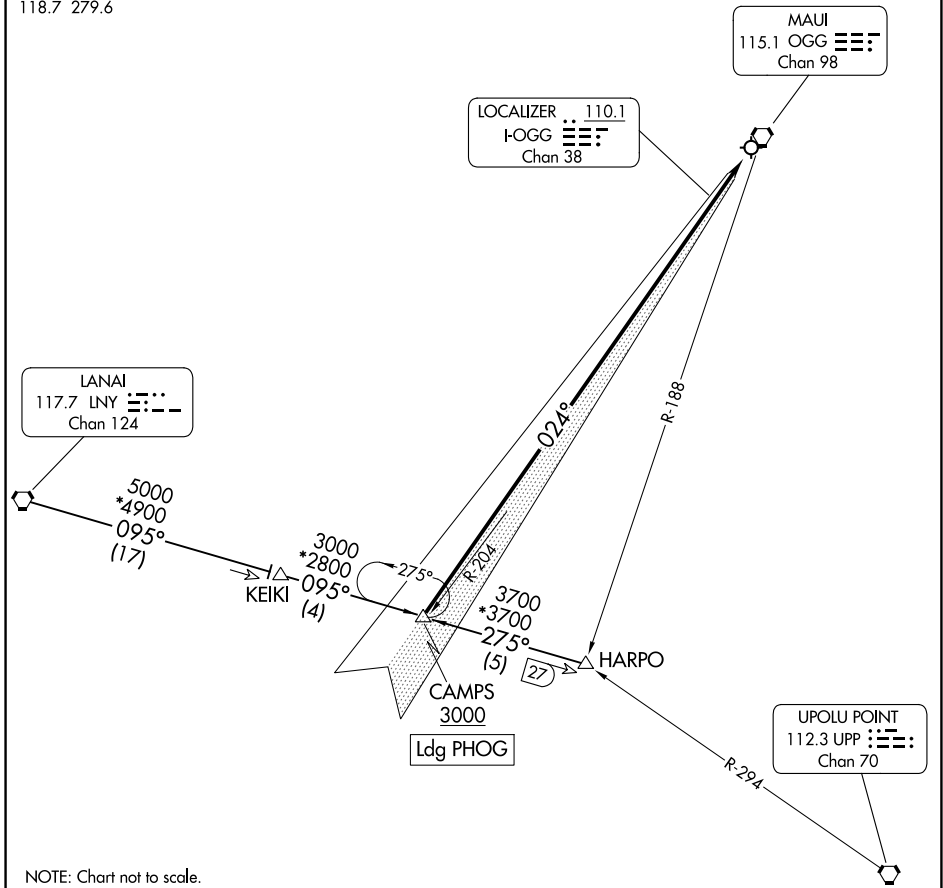
RADAR required to HARPO.
DME required for LANAI Transition.

MAUI
115.1 OGG 
Chan 98

LOCALIZER .. 110.1
I-OGG 
Chan 38

LANAI
117.7 LNY 
Chan 124

UPOLU POINT
112.3 UPP 
Chan 70



PAC, 11 JUL 2024 to 05 SEP 2024

PAC, 11 JUL 2024 to 05 SEP 2024

NOTE: Chart not to scale.

ARRIVAL ROUTE DESCRIPTION

HARPO TRANSITION (HARPO.CAMPS4): From over HARPO on LNY R-095 to CAMPS.
Thence

LANAI TRANSITION (LNY.CAMPS4): From over LNY VORTAC on LNY R-095 to CAMPS.
Thence

. . . . cross CAMPS at or above 3000, then on I-OGG localizer course. Expect
ILS Y or LOC Y RWY 2 approach.