

HIAKA ONE DEPARTURE (RNAV)

AL-762 (FAA)

PAC, 11 JUL 2024 to 05 SEP 2024

ATIS 128.6
 CLNC DEL 120.6 290.5
 GND CON 121.9 279.6
 MAJITOWER* 118.7 279.6
 HCF APPROACH NORTH 120.2 322.4
 SOUTH 119.5 225.4

NOTE: RNAV 1.
 NOTE: RADAR required.
 NOTE: GPS required.
 NOTE: Turbopjet and turboprop aircraft only.

▲ APACK

NOTE: APACK departures expect direct/vectors to APACK/R463.
 NOTE: CANON departures expect direct/vectors to CANON.
 NOTE: CARRP departures expect direct/vectors to CARRP/A579.
 NOTE: CHOKO departures expect direct/vectors to CHOKO.
 NOTE: CLUTS departures expect direct/vectors to CLUTS/R465.
 NOTE: DAINNO departures expect direct/vectors to DAINNO.
 NOTE: DOVRR departures expect direct/vectors to DOVRR/B596.
 NOTE: EBBER departures expect direct/vectors to EBBER/R577.
 NOTE: JULIE departures expect direct/vectors to JULIE.
 NOTE: KOA departures expect direct/vectors to KOA VORTAC.
 NOTE: LILIA departures expect direct/vectors to LILIA.
 NOTE: NONNI departures expect direct/vectors to NONNI.
 NOTE: PUPPI departures expect direct/vectors to PUPPI.
 NOTE: SAKKI departures expect direct/vectors to SAKKI.
 NOTE: SCOON departures expect direct/vectors to SCOON.

◆ THOMA

◆ DAINNO

▲ CANON

▲ LILIA

▲ SYVAD △ PUPPI

▲ NONNI

N

◆ CHOKO

JULIE △ SAKKI

UPPU POINT

◆ KONA KOA

▲ CARRP

▲ DOVRR

◆ TARDE

▲ CLUTS

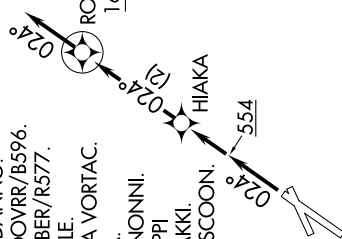
ROSAH 1600

▲ EBBER

▲ SCOON

▼ DEPARTURE ROUTE DESCRIPTION

TAKEOFF RUNWAY 2: Climb heading 024° to 554, then direct HIAKA, thence. . . .
 . . . on track 024° to cross ROSAH at or above 1600, then on track 024° for RADAR vectors to assigned route/fix, maintain 16000 or as assigned by ATC. Expect clearance to filed altitude/flight level within 10 minutes after departure.



TOP ALTITUDE:
16000

TAKEOFF MINIMUMS
 Rwy 2: Standard with minimum climb of 500' per NM to 554.
 Rwys 5, 20, 23: NA - ATC.
 NOTE: Chart not to scale.

HIAKA ONE DEPARTURE (RNAV)

PAC, 11 JUL 2024 to 05 SEP 2024