

(LNDHY.LNDHY1) 19171

# LNDHY ONE ARRIVAL (RNAV)

AL-762 (FAA)

KAHULUI (OGG) (PHOG)

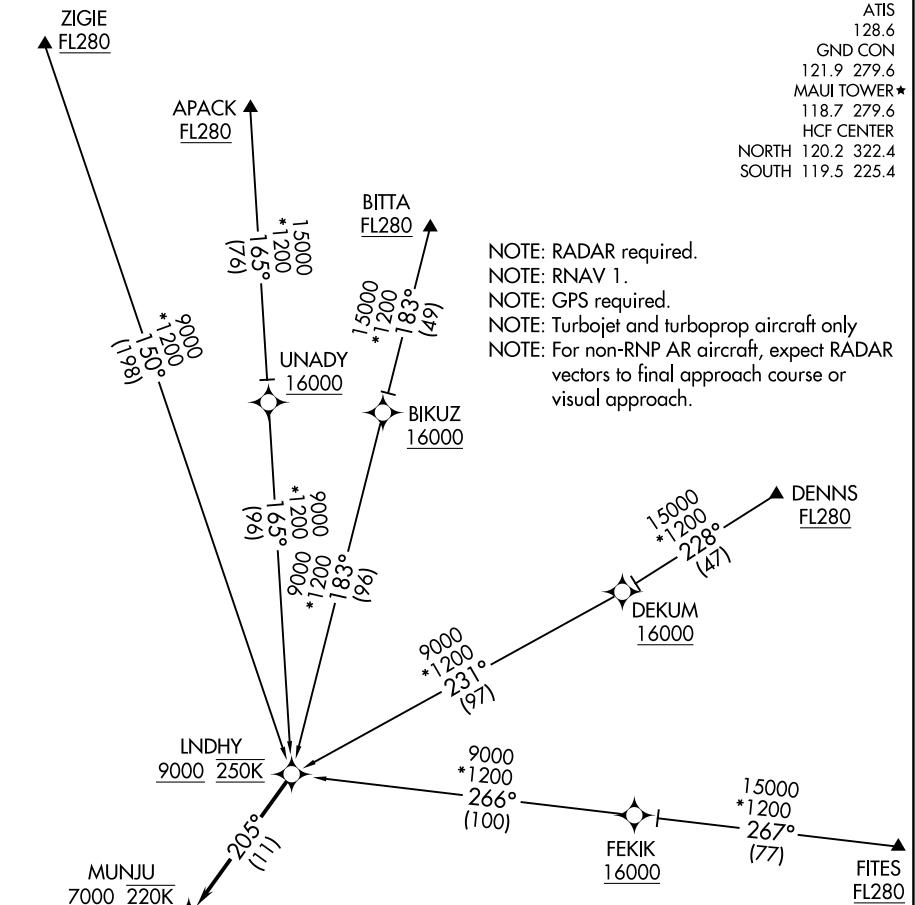
KAHULUI, HAWAII

ATIS 128.6  
 GND CON 121.9 279.6  
 MAUI TOWER\* 118.7 279.6  
 HCF CENTER  
 NORTH 120.2 322.4  
 SOUTH 119.5 225.4

NOTE: RADAR required.  
 NOTE: RNAV 1.  
 NOTE: GPS required.  
 NOTE: Turbojet and turboprop aircraft only  
 NOTE: For non-RNP AR aircraft, expect RADAR vectors to final approach course or visual approach.

PAC, 11 JUL 2024 to 05 SEP 2024

PAC, 11 JUL 2024 to 05 SEP 2024



**ARRIVAL ROUTE DESCRIPTION**

APACK TRANSITION (APACK.LNDHY1)  
BITTA TRANSITION (BITTA.LNDHY1)  
DENNS TRANSITION (DENNS.LNDHY1)  
FITES TRANSITION (FITES.LNDHY1)  
ZIGIE TRANSITION (ZIGIE.LNDHY1)

From LNDHY on track 205° to cross MUNJU at or above 7000 and at 220K, then on track 204° to cross HOMAI at 5000 and at 210K, then on track 204° . Expect RNAV (RNP)/ILS/Visual Approach Landing Rwy 2, as assigned by ATC.

NOTE: Chart not to scale.

# LNDHY ONE ARRIVAL (RNAV)

(LNDHY.LNDHY1) 20JUN19

KAHULUI, HAWAII  
KAHULUI (OGG) (PHOG)