

APP CRS	Rwy ldg	<b>6995</b>
<b>204°</b>	TDZE	<b>25</b>
	Apt Elev	<b>53</b>

# RNAV (GPS) RWY 20

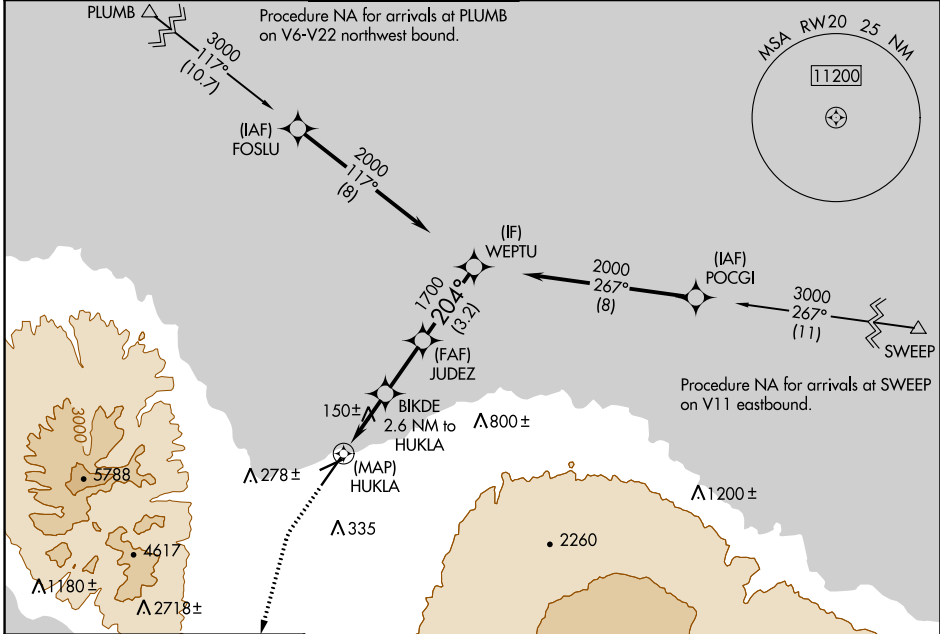
KAHALUI (OGG)(PHOG)

RNP APCH.

**⚠** When local altimeter setting not received, procedure NA.

MISSED APPROACH: Climb to 500 then climbing left turn to 4300 direct NDREW and hold.

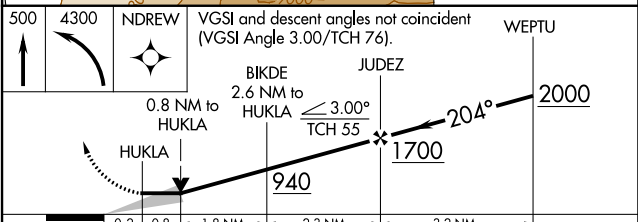
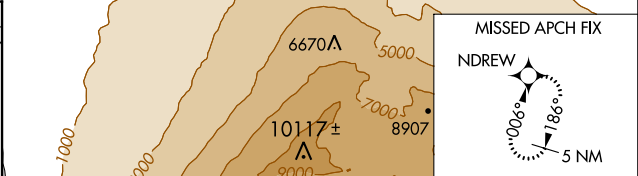
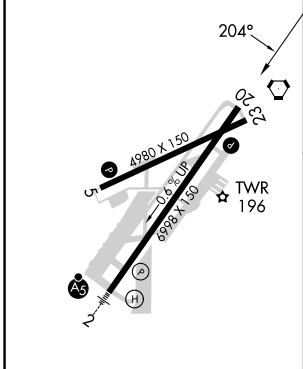
ATIS	HCF APPROACH	MAUI TOWER*	GND CON	CLNC DEL	UNICOM
<b>128.6</b>	<b>120.2 322.4</b> (NORTH) <b>119.5 225.4</b> (SOUTH)	<b>118.7</b> (CTAF) <b>0 279.6</b>	<b>121.9 279.6</b>	<b>120.6 290.5</b>	<b>122.95</b>



PAC, 11 JUL 2024 to 05 SEP 2024

PAC, 11 JUL 2024 to 05 SEP 2024

ELEV	53	TDZE	25
------	----	------	----



CATEGORY	A	B	C	D
LNAV MDA	400-1 375 (400-1)			
CIRCLING	500-1 447 (500-1)	620-1 567 (600-1)	740-2 687 (700-2)	1140-3 1087 (1100-3)