

APP CRS	Rwy Idg	6995
024°	TDZE	55
	Apt Elev	55

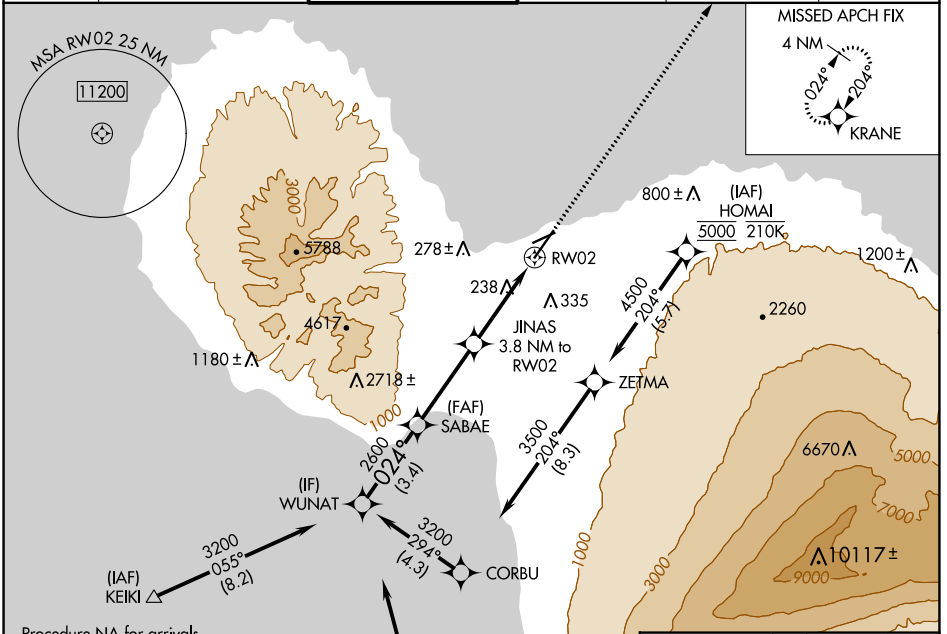
RNAV (GPS) Y RWY 2

KAHALUI (OGG)(PHOG)

RNP APCH-GPS.
 When Kahului altimeter setting not received, procedure NA.

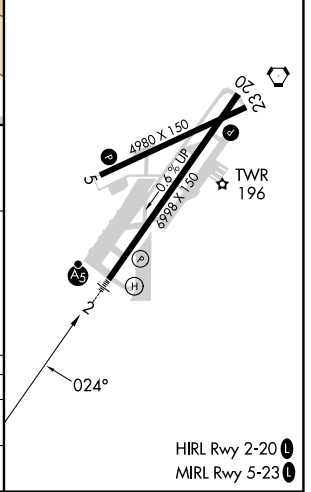
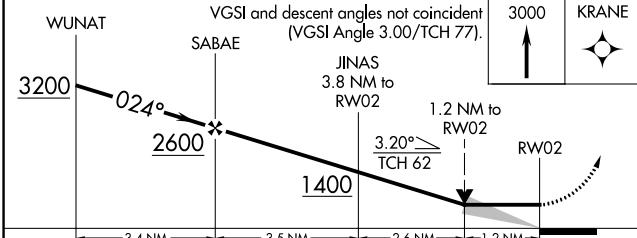
MALSR
 MISSED APPROACH: Climb to 3000 direct KRANE and hold.

ATIS 128.6	HCF APPROACH 120.2 322.4 (NORTH) 119.5 225.4 (SOUTH)	MAUI TOWER ★ 118.7 (CTAF) 0 279.6	GND CON 121.9 279.6	CLNC DEL 120.6 290.5	UNICOM 122.95
----------------------	--	---	-------------------------------	--------------------------------	-------------------------



Procedure NA for arrivals at KEIKI on V2-21 westbound.

ELEV 55	TDZE 55
---------	---------



CATEGORY	A	B	C	D
LNVA MDA	500-1/2 445 (500-1/2)		500-7/8 445 (500-7/8)	
CIRCLING	500-1 445 (500-1)	620-1 565 (600-1)	740-2 685 (700-2)	1140-3 1085 (1100-3)

PAC, 11 JUL 2024 to 05 SEP 2024

PAC, 11 JUL 2024 to 05 SEP 2024

HIRL Rwy 2-20
 MIRL Rwy 5-23