

MARQUETTE, MICHIGAN

AL-773 (FAA)

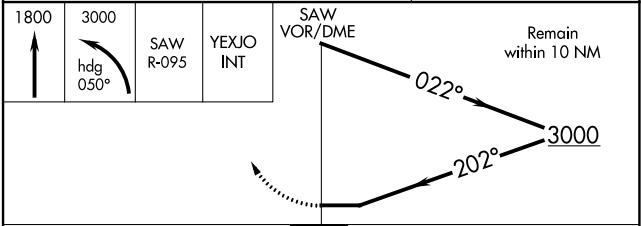
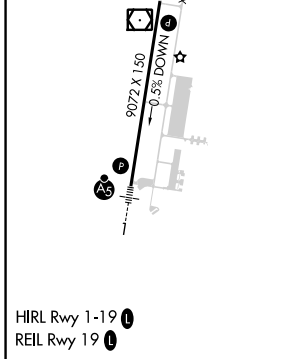
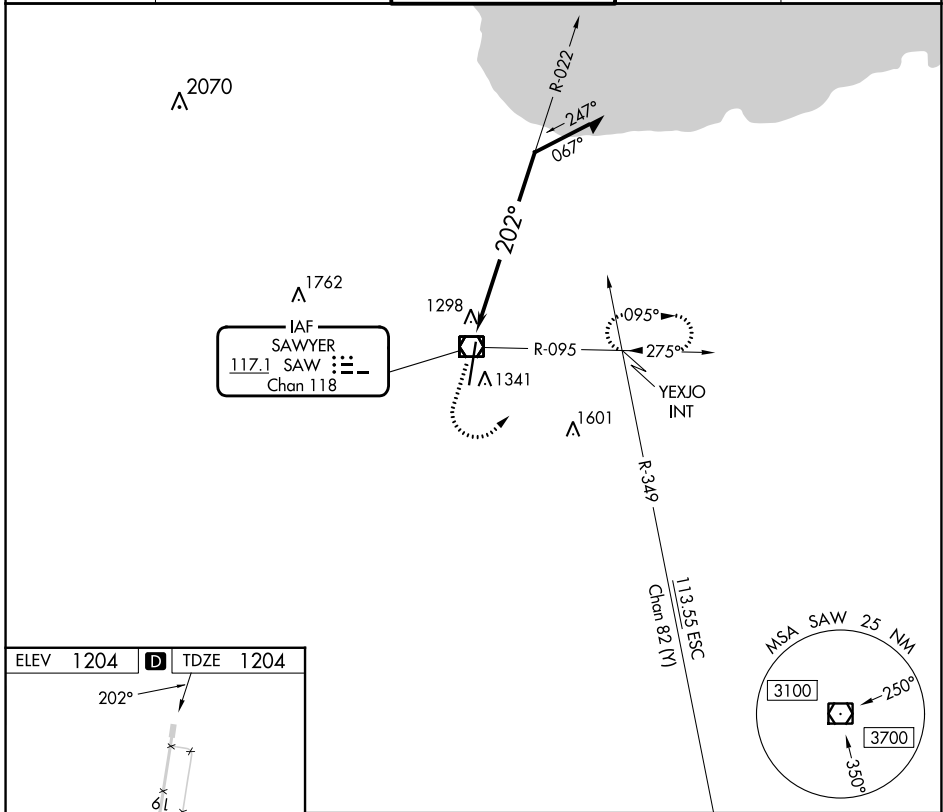
24025

| | | | |
|---|------------------------|-----------------------------|---|
| VOR/DME SAW 117.1 Chan 118 | APP CRS 202° | Rwy Idg TDZE Apt Elev | 9072 1204 1204 |
|---|------------------------|-----------------------------|---|

VOR RWY 19

MARQUETTE/SAWYER RGNL (SAW)

| | | | |
|----------------------------|--|---|--------------------------|
| | | MISSED APPROACH: Climb to 1800 then climbing left turn to 3000 on heading 050° and SAW VOR/DME R-095 to YEXJO Int and hold. | |
| AWOS-3PT 118.375 | MINNEAPOLIS CENTER 119.1 290.2 | SAWYER TOWER ★ 119.975 (CTAF) | GND CON 121.65 |
| | | UNICOM 122.7 | |



| CATEGORY | A | B | C | D |
|-------------------|--------|-------------|--|--|
| S-19 | 1780-1 | 576 (600-1) | 1780-1 ³ / ₈ | 576 (600-1 ³ / ₈) |
| C CIRCLING | 1780-1 | 576 (600-1) | 1820-1 ³ / ₄ 616 (700-1 ³ / ₄) | 1820-2 616 (700-2) |

MARQUETTE, MICHIGAN
Amdt 1 13SEP18

46°21'N - 87°24'W

MARQUETTE/SAWYER RGNL (SAW) VOR RWY 19

EC-1, 11 JUL 2024 to 08 AUG 2024

EC-1, 11 JUL 2024 to 08 AUG 2024