


LOC/DME I-LIH 110.9 Chan 46	APP CRS 349°	Rwy Idg 6500	TDZE 96
		Apt Elev 152	

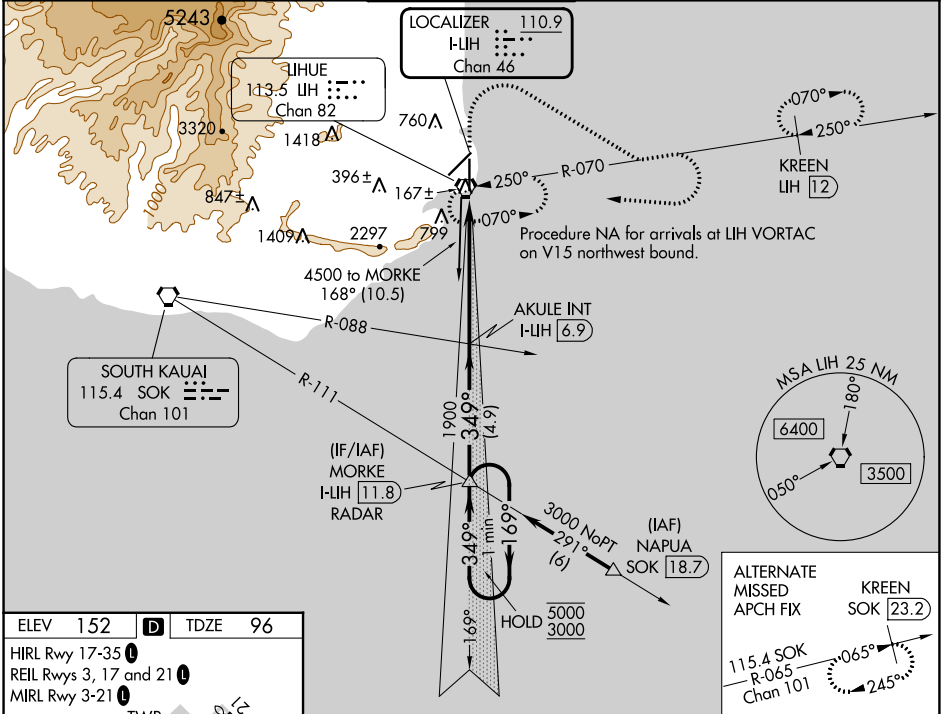
ILS or LOC RWY 35

LIHUE (LIH)(PHLI)




⚠ Circling NA at night. Circling NA west of Rwy 17-35. For inop ALS, increase S-ILS 35 Cat E visibility to ¾ SM and increase S-LOC 35 Cat E visibility to 1 SM.

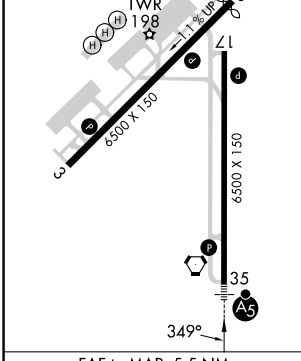
MALSRS  MISSED APPROACH: Climb to 600 then climbing right turn to 3000 on heading 110° and LIH VORTAC R-070 then climbing right turn to 4000 direct LIH VORTAC and hold. (TACAN or DME equipped aircraft continue on LIH VORTAC R-070 to KREEN/LIH VORTAC 12 DME and hold, east, RT, 250° inbound, continue climb-in-hold to 3000).

ATIS 127.2	HCF CENTER 126.5 269.4	LIHUE TOWER* 118.9 (CTAF) 263.1	GND CON 121.9	CLNC DEL 126.5 269.4 (When twr closed)
----------------------	----------------------------------	---	-------------------------	---

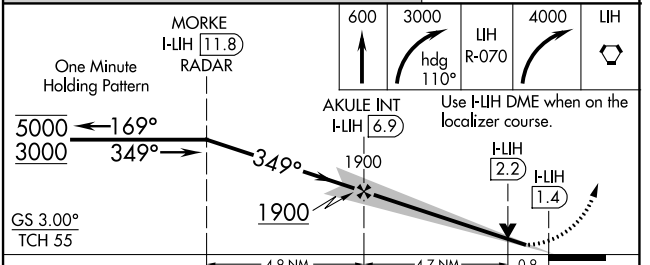


ELEV 152	D	TDZE 96
----------	----------	---------

HIRL Rwy 17-35 
 REIL Rwy 3, 17 and 21 
 MIRL Rwy 3-21 



Knots	60	90	120	150	180
Min:Sec	5:30	3:40	2:45	2:12	1:50



CATEGORY	A	B	C	D	E
S-ILS 35	296-½		200 (200-½)		
S-LOC 35	420-½		324 (300-½)		
C CIRCLING	520-1 368 (400-1)	620-1 468 (500-1)	620-1½ 468 (500-1½)	720-2 568 (600-2)	740-2 588 (600-2)

PAC, 11 JUL 2024 to 05 SEP 2024

PAC, 11 JUL 2024 to 05 SEP 2024