

(LIHUE6.BOOKE) 24025

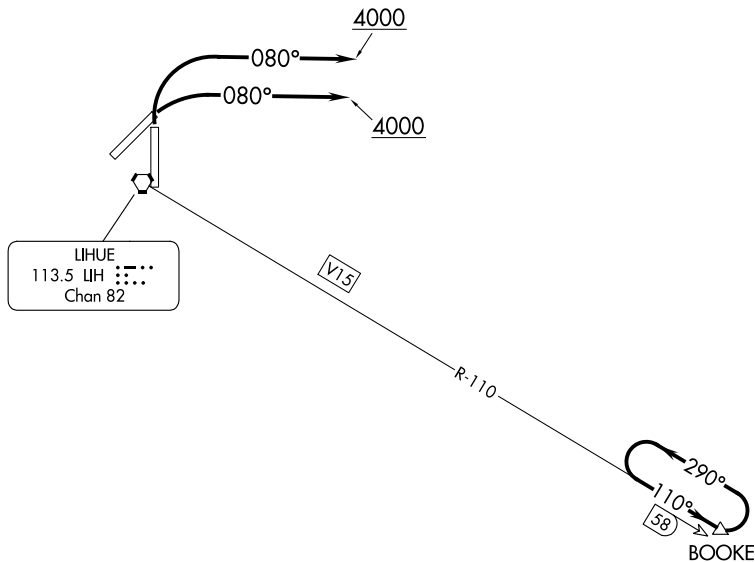
# LIHUE SIX DEPARTURE

AL-776 (FAA)

LIHUE (LIH)(PHLI)  
LIHUE, HAWAII

HCF CENTER  
126.5 269.4

**TOP ALTITUDE:  
ASSIGNED BY ATC**



### TAKEOFF MINIMUMS

Rwy 3: Standard.

Rwy 35: Standard with minimum climb of 230' per NM to 700.

NOTE: RADAR required.

NOTE: DME required.

NOTE: Chart not to scale.



### DEPARTURE ROUTE DESCRIPTION

TAKEOFF RUNWAYS 3, 35: Climbing right turn heading 080° to 4000, thence. . . .

. . . .Expect RADAR vectors to intercept LIH VORTAC R-110 to BOOKE/LIH 58 DME fix, maintain ATC assigned altitude. Expect clearance to filed altitude/flight level 10 minutes after departure.

LOST COMMUNICATIONS: If not in contact with HCF 1 minute after departure, maintain SID heading until 10 NM east of LIH VORTAC, then intercept LIH R-110 to BOOKE DME fix.

**LIHUE SIX DEPARTURE**  
(LIHUE6.BOOKE) 23FEB23

LIHUE, HAWAII  
LIHUE (LIH)(PHLI)

PAC, 11 JUL 2024 to 05 SEP 2024

PAC, 11 JUL 2024 to 05 SEP 2024