

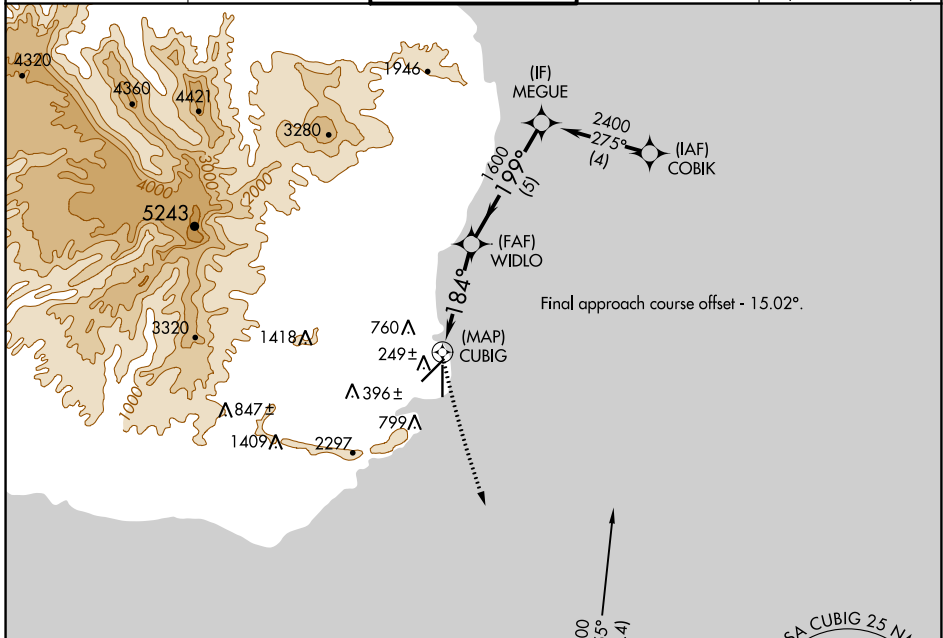
APP CRS	Rwy Idg	6500
184°	TDZE	98
	Apt Elev	152

RNAV (GPS) RWY 17

LIHUE (LIH)(PHLI)

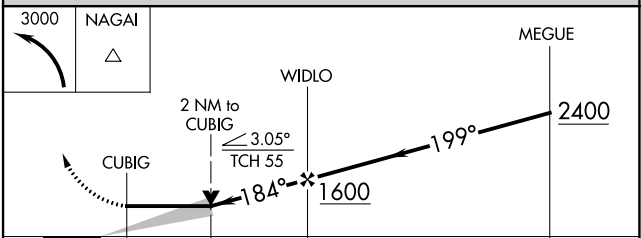
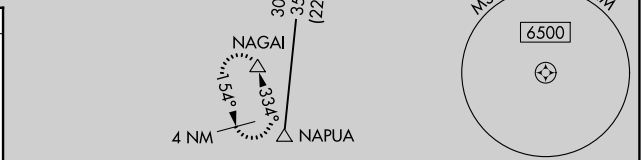
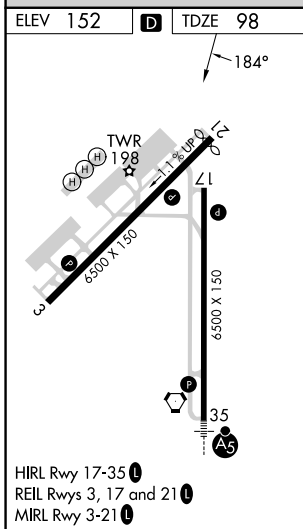
RNP APCH-GPS.	MISSED APPROACH: Climbing left turn to 3000 direct NAGAI and hold.
Circling NA at night. Circling NA west of Rwy 17-35.	

ATIS 127.2	HCF CENTER 126.5 269.4	LIHUE TOWER* 118.9 (CTAF) 0 263.1	GND CON 121.9	CLNC DEL 126.5 269.4 (When twr closed)
----------------------	----------------------------------	--	-------------------------	---



PAC, 11 JUL 2024 to 05 SEP 2024

PAC, 11 JUL 2024 to 05 SEP 2024



CATEGORY	A	B	C	D
LNAV MDA	940-1 842 (800-1)	940-1¼ 842 (800-1¼)	940-2½	842 (800-2½)
CIRCLING	940-1 788 (800-1)	940-1¼ 788 (800-1¼)	940-2½	788 (800-2½)