

APP CRS	Rwy Idg	6295
214°	TDZE	118
	Apt Elev	152

RNAV (RNP) Z RWY 21

LIHUE (LIH)(PHLI)

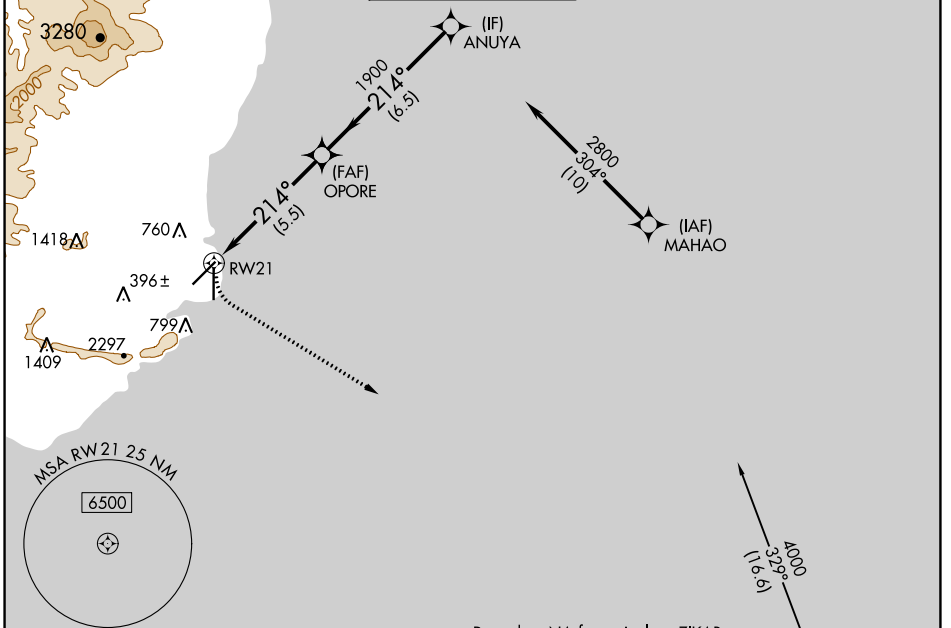
RNP AR APCH-GPS.

▼ For uncompensated Baro-VNAV systems, procedure NA below 15°C or above 54°C.

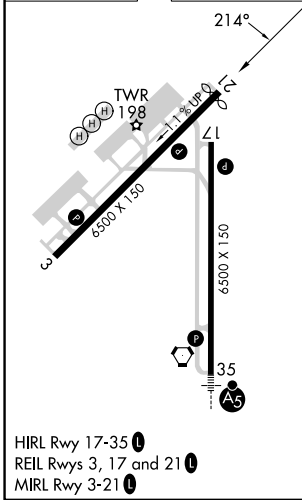
▲ MISSED APPROACH: Climbing left turn to 3000 direct ZIKAB and hold. *Missed approach requires minimum climb of 350 feet per NM to 2500.

MISSED APPROACH: Climbing left turn to 3000 direct ZIKAB and hold.
*Missed approach requires minimum climb of 350 feet per NM to 2500.

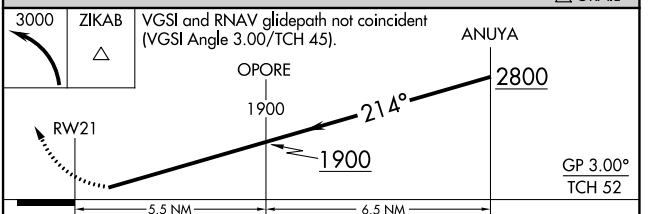
ATIS 127.2	HCF CENTER 126.5 269.4	LIHUE TOWER* 118.9(CTAF) 0 263.1	GND CON 121.9	CLNC DEL 126.5 269.4 (When twr closed)
----------------------	----------------------------------	--------------------------------------------	-------------------------	-----------------------------------------------------



ELEV 152	D	TDZE 118
----------	----------	----------



HIRL Rwy 17-35 **Ⓛ**
REIL Rwys 3, 17 and 21 **Ⓛ**
MIRL Rwy 3-21 **Ⓛ**



CATEGORY	A	B	C	D
RNP 0.30 DA*	663-2 545 (600-2)			
RNP 0.30 DA	1078-4 960 (1000-4)			

AUTHORIZATION REQUIRED

PAC, 11 JUL 2024 to 05 SEP 2024

PAC, 11 JUL 2024 to 05 SEP 2024