

| | | |
|-------------|----------|-------------|
| APP CRS | Rwy Idg | 6295 |
| 214° | TDZE | 118 |
| | Apt Elev | 152 |

RNAV (GPS) Y RWY 21

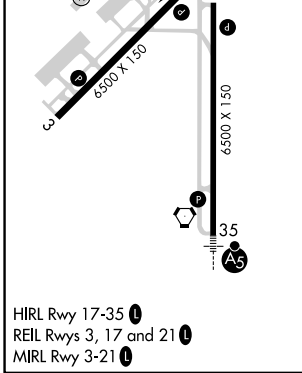
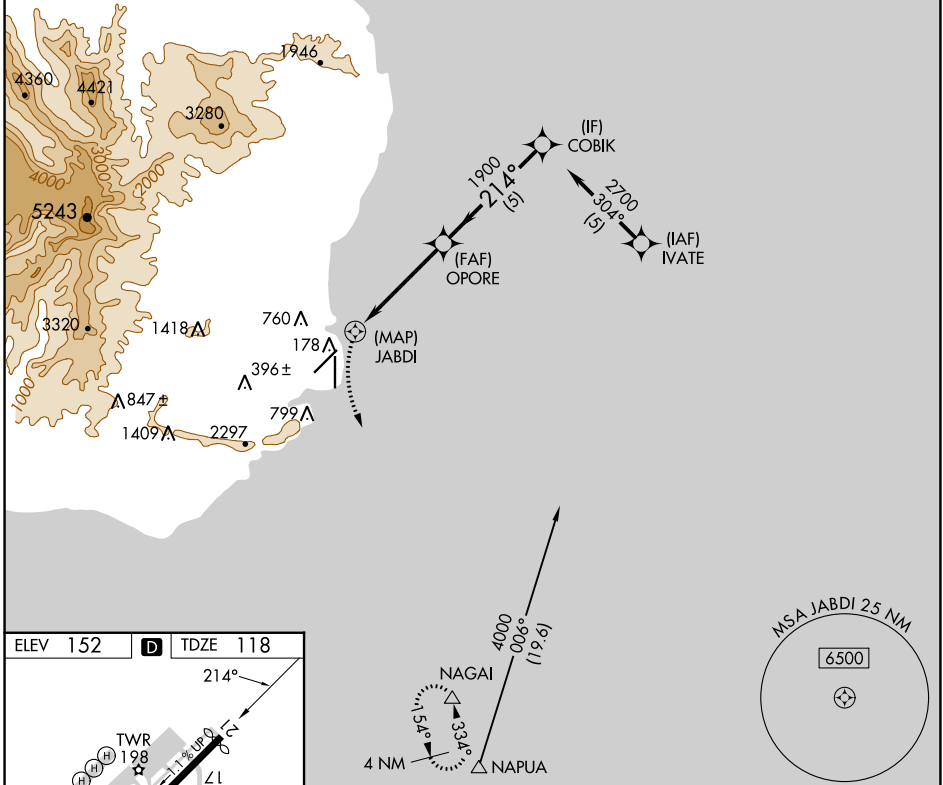
LIHUE (LIH)(PHLI)

RNP APCH-GPS.

▽ Circling NA at night. Circling NA west of Rwy 17-35.
⚠ Rwy 21 helicopter visibility reduction below 3/4 SM NA.

MISSED APPROACH: Climbing left turn to 3000 direct NAGAL and hold.

| | | | | |
|----------------------|----------------------------------|--|-------------------------|---|
| ATIS 127.2 | HCF CENTER 126.5 269.4 | LIHUE TOWER* 118.9(CTAF) 0 263.1 | GND CON 121.9 | CLNC DEL 126.5 269.4 (When twr closed) |
|----------------------|----------------------------------|--|-------------------------|---|



HIRL Rwy 17-35 **Ⓛ**
 REIL Rws 3, 17 and 21 **Ⓛ**
 MIRL Rwy 3-21 **Ⓛ**

| | | | | | |
|-------------------|--------|--|----------------|--------------|------|
| 3000 | NAGAL | VGSI and descent angles not coincident (VGSI Angle 3.00/TCH 45). | | COBIK | |
| | | 1.5 NM to JABDI | ≤ 3.05° TCH 52 | 2700 | |
| | | JABDI | OPORE | | |
| | | 1900 | | | |
| | | 1 NM | 1.5 NM | 3 NM | 5 NM |
| CATEGORY | A | B | C | D | |
| LNAV MDA | 920-1¼ | 802 (800-1¼) | 920-2½ | 802 (800-2½) | |
| C CIRCLING | 920-1¼ | 768 (800-1¼) | 920-2½ | 768 (800-2½) | |

PAC, 11 JUL 2024 to 05 SEP 2024

PAC, 11 JUL 2024 to 05 SEP 2024