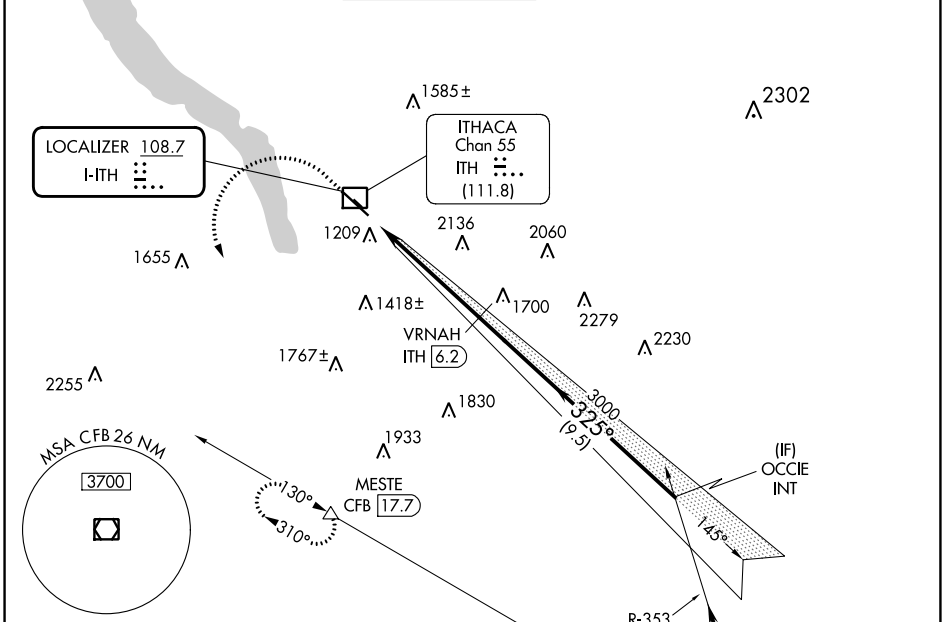


LOC I-ITH	APP CRS	Rwy Idg	6602
<b>108.7</b>	<b>325°</b>	TDZE	1099
		Apt Elev	1099

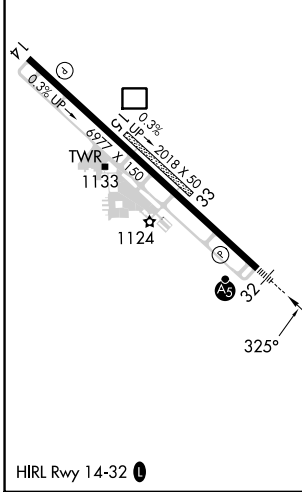
# ILS or LOC RWY 32

ITHACA TOMPKINS INTL (ITH)

DME required.		MALSR		MISSED APPROACH: Climb to 2600 then climbing left turn to 4000 on heading 180° and CFB VOR/DME R-310 to MESTE/CFB VOR/DME 17.7 DME and hold.	
<p>Circling NA to Rws 15 and 33. Inop table does not apply to S-ILS 32. DME from ITH DME. Simultaneous reception of I-ITH LOC and ITH DME required.</p> <p>-19°C</p>		<b>ITHACA TOWER ★</b> <b>119.6 (CTAF)</b>		GND CON	121.8
ATIS	ELMIRA APP CON ★	UNICOM	122.95	CLNC DEL	121.8
125.175	124.3 257.8				



ELEV 1099	<b>D</b>	TDZE 1099
-----------	----------	-----------



Procedure NA for arrival on CFB VOR/DME airway radials 310 CW 015 and V374 northwest bound.

2600	4000	CFB R-310	MESTE	OCIE INT
↑	hdg 180°			
		VRNAH ITH 6.2		
		ITH 0.8	3000	3400
		ITH 3.6	3000	GS 3.20° TCH 54
			2.9 NM	2.6 NM
			9.5 NM	

CATEGORY	A	B	C	D
S-ILS 32	1349/24		250 (300-½)	
S-LOC 32	2140/40 1041 (1100-¾)	2140/55 1041 (1100-1)	2140-2½ 1041 (1100-2½)	
<b>C</b> CIRCLING	2140-1¼ 1041 (1100-1¼)	2140-1½ 1041 (1100-½)	2140-3 1041 (1100-3)	2440-3 1341 (1400-3)

NE-2, 11 JUL 2024 to 08 AUG 2024

NE-2, 11 JUL 2024 to 08 AUG 2024