

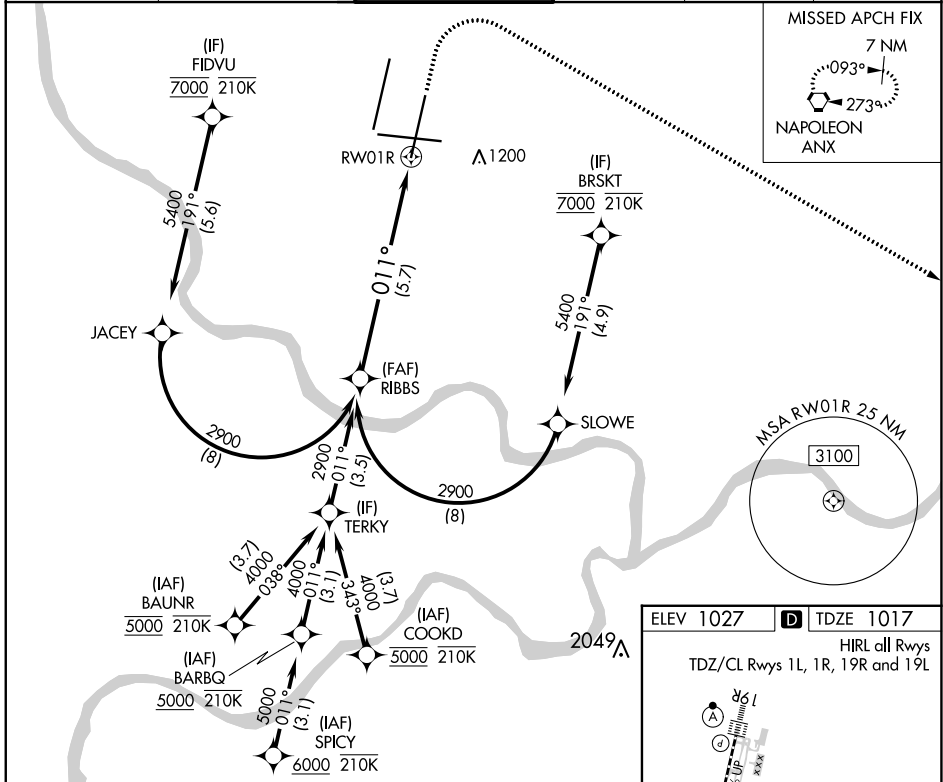
APP CRS	Rwy Idg	9500
011°	TDZE	1017
	Apt Elev	1027

RNAV (RNP) Z RWY 1R

KANSAS CITY INTL (MCI)

RNP AR APCH - GPS.	ALSF-2 	MISSED APPROACH: Climb to 1500 then climbing right turn to 4000 direct ANX VORTAC and hold.
Use of FD or AP required during simultaneous operations. For uncompensated Baro-VNAV systems, procedure NA below -19°C or above 54°C. Simultaneous approach authorized, except for arrivals at FIDVU, BRSKT, BAUNR and COOKD. For inop ALS, increase RNP 0.30 all Cats visibility to RVR 4500.		

D-ATIS 128.375	KANSAS CITY APP CON 120.95 318.1	INTERNATIONAL TOWER 128.2 254.25	GND CON 121.8	CLNC DEL 135.7	CPDLC
--------------------------	--	--	-------------------------	--------------------------	-------



NC-3, 11 JUL 2024 to 08 AUG 2024

NC-3, 11 JUL 2024 to 08 AUG 2024

RIBBS 2900 GP 3.00° TCH 59	VGSI and RNAV glidepath not coincident (VGSI Angle 3.00/TCH 74).	1500 4000 ANX
2900 011° See planview for multiple IF locations.	RWY 1R 5.7 NM	
CATEGORY	A B C D	
RNP 0.30 DA	1280/24 263 (300-1/2)	
AUTHORIZATION REQUIRED		

