

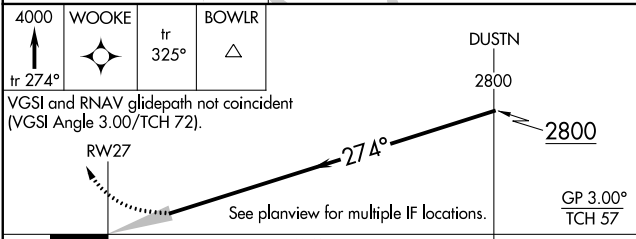
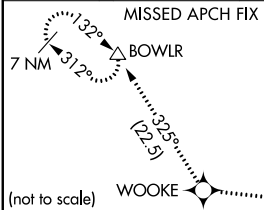
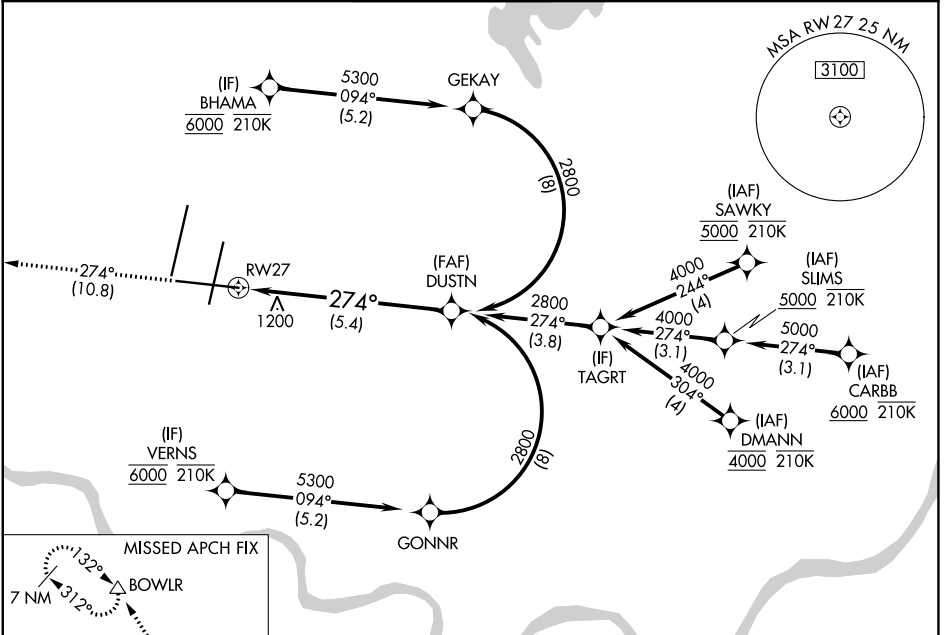
APP CRS	Rwy Idg	9501
274°	TDZE	1027
	Apt Elev	1027

RNAV (RNP) Z RWY 27

KANSAS CITY INTL (MCI)

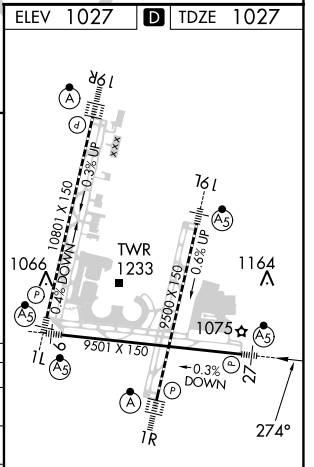
RADAR required for procedure entry. RNP AR APCH - GPS.		MALSR	MISSED APPROACH: Climb to 4000 on track 274° to WOOKIE and on track 325° to BOWL and hold.
For uncompensated Baro-VNAV systems, procedure NA below -19°C or above 54°C. For inop ALS, increase RNP 0.15 all Cats visibility to RVR 5500 and RNP 0.30 all Cats visibility to 1 3/8 SM.			

D-ATIS 128.375	KANSAS CITY APP CON 120.95 318.1	INTERNATIONAL TOWER 128.2 254.25	GND CON 121.8	CLNC DEL 135.7	CPDLC
--------------------------	--	--	-------------------------	--------------------------	-------



CATEGORY	A	B	C	D
RNP 0.15 DA		1371/30	344 (400-%)	
RNP 0.30 DA		1506/50	479 (500-1)	

AUTHORIZATION REQUIRED



HIRL all Rwys
TDZ/CL Rwys 1L, 1R, 19R and 19L

NC-3, 11 JUL 2024 to 08 AUG 2024

NC-3, 11 JUL 2024 to 08 AUG 2024