

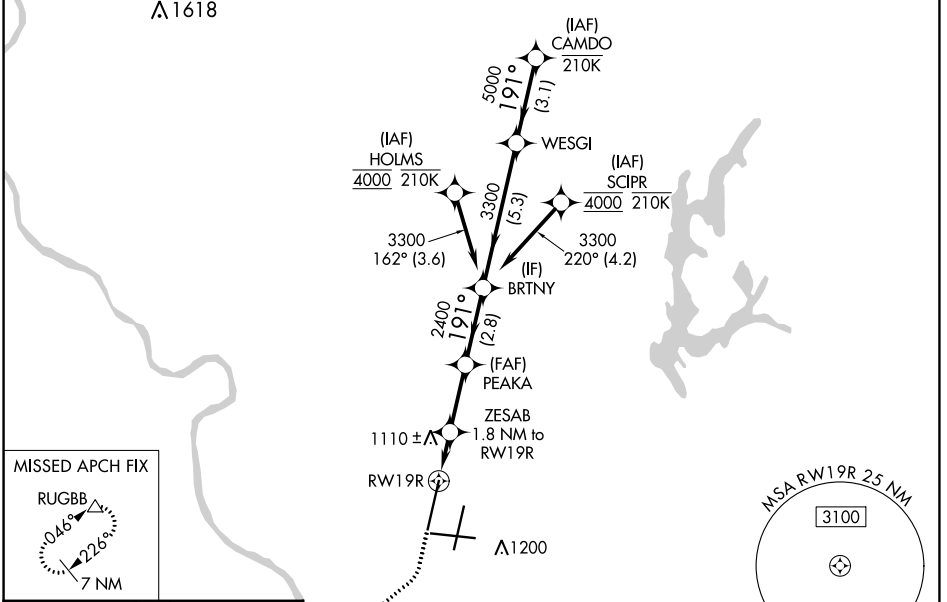
WAAS CH 72908 W19B	APP CRS 191°	Rwy Idg 10801 TDZE 991 Apt Elev 1027
--	------------------------	---

RNAV (GPS) Y RWY 19R

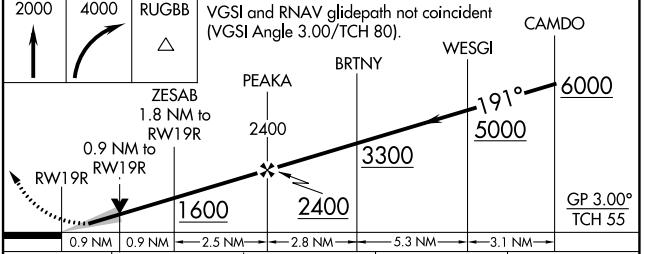
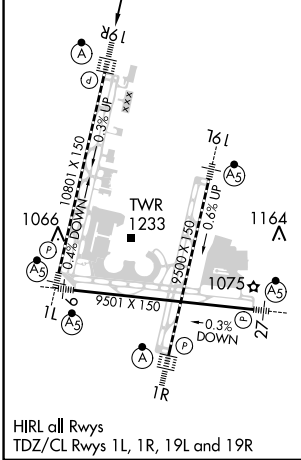
KANSAS CITY INTL (MCI)

RNP APCH - GPS.	ALSF-2 	MISSED APPROACH: Climb to 2000 then climbing right turn to 4000 direct RUGBB and hold.
<p>▼ LNAV procedure NA during simultaneous operations. Use of FD or AP required during simultaneous operations. For uncompensated Baro-VNAV systems, LNAV/VNAV NA below -21°C or above 54°C. For inop ALS, increase LNAV Cats C/D visibility to RVR 5500. Simultaneous approach authorized except from SCRIP and HOLMS.</p>		

D-ATIS 128.375	KANSAS CITY APP CON 120.95 318.1	INTERNATIONAL TOWER 128.2 254.25	GND CON 121.8	CLNC DEL 135.7	CPDLC
--------------------------	--	--	-------------------------	--------------------------	-------



ELEV 1027	D	TDZE 991
-----------	----------	----------



CATEGORY	A	B	C	D
LPV DA		1191/18	200 (200-½)	
LNAV/VNAV DA		1417/40	426 (400-¾)	
LNAV MDA	1360/24	369 (400-½)	1360/35	369 (400-¾)
C CIRCLING	1540-1	513 (600-1)	1540-1½ 513 (600-1½)	1580-2 553 (600-2)

NC-3, 11 JUL 2024 to 08 AUG 2024

NC-3, 11 JUL 2024 to 08 AUG 2024