


APP CRS	Rwy ldg	8016
101°	TDZE	10
	Apt Elev	10

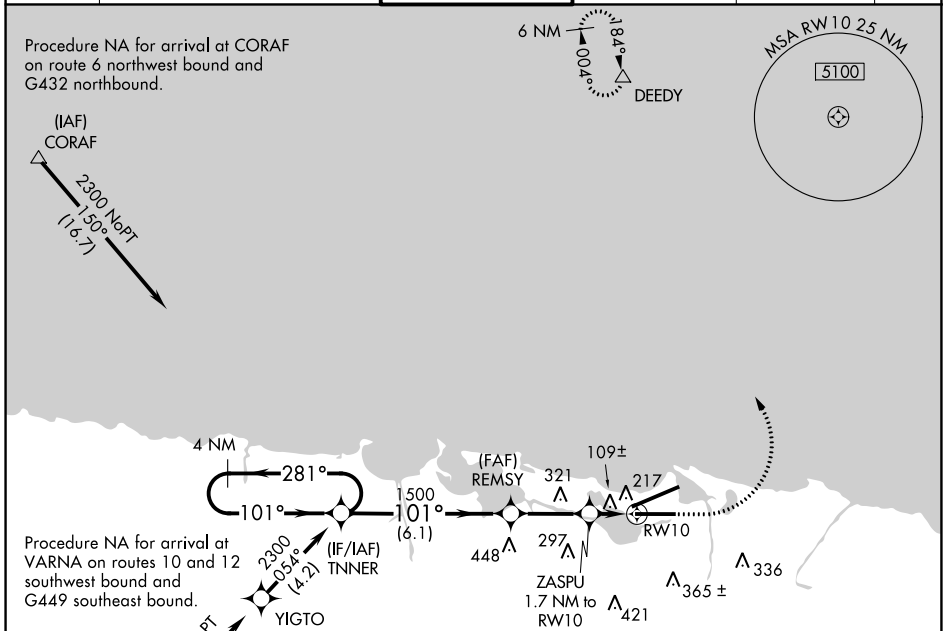
RNAV (GPS) RWY 10

LUIS MUNOZ MARIN INTL (SJU)(TJSJ)

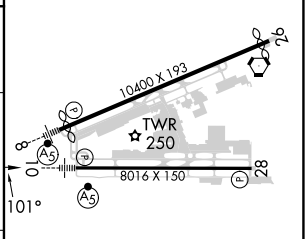
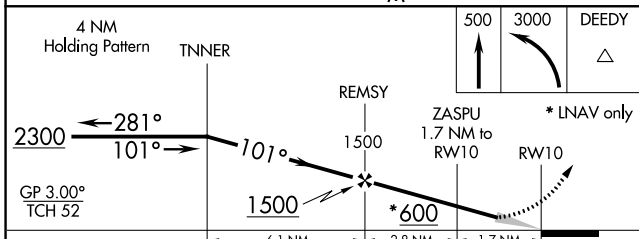
⚠ WAAS VNAV NA. For uncompensated Baro-VNAV systems, LNAV/VNAV NA below -15°C (5°F) or above 54°C (130°F). DME/DME RNP-0.3 NA. For inop MALSRL, increase LNAV/VNAV visibility all Cats to 1¼ and increase LNAV Cats C/D visibility to 1⅓.

MALSRL
 MISSED APPROACH: Climb to 500 then climbing left turn to 3000 direct DEEDY and hold.

D-ATIS	SAN JUAN APP CON	SAN JUAN TOWER	GND CON	CLNC DEL	CPDLC
125.8	119.4 269.2 (WEST & SW) 120.9 290.2 (NORTH & EAST)	132.05 257.8	121.9 348.6	126.4 284.6	



ELEV	10	D	TDZE	10
------	----	----------	------	----



CATEGORY	A	B	C	D
LNAV/VNAV DA	408-7/8 398 (400-7/8)			
LNAV MDA	480-1/2	470 (500-1/2)	480-1	470 (500-1)
C CIRCLING	600-1	590 (600-1)	740-2 730 (800-2)	920-3 910 (1000-3)

REIL Rwy 26
HIRL Rwys 8-26 and 10-28

SE-3, 11 JUL 2024 to 08 AUG 2024

SE-3, 11 JUL 2024 to 08 AUG 2024