

APP CRS	Rwy ldg	9908
258°	TDZE	7
	Apt Elev	10

RNAV (GPS) RWY 26

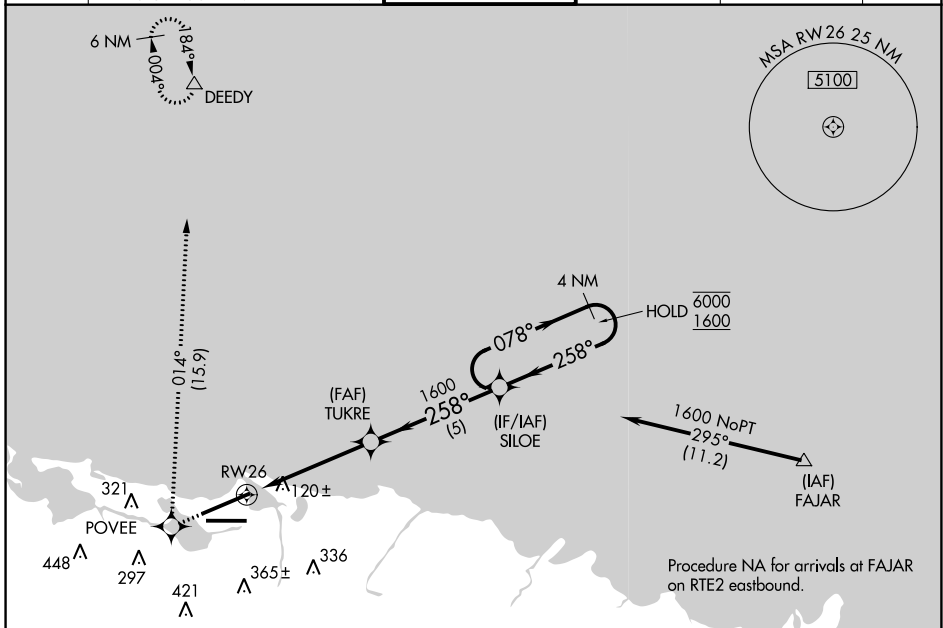
LUIS MUNOZ MARIN INTL (SJU)(TJSJ)

RNP APCH.

▼ For uncompensated Baro-VNAV systems, LNAV/VNAV
 ▲ NA below 22°C or above 54°C.

MISSED APPROACH: Climb to 3000 direct POVEE and right turn on track 014° direct DEEDY and hold.

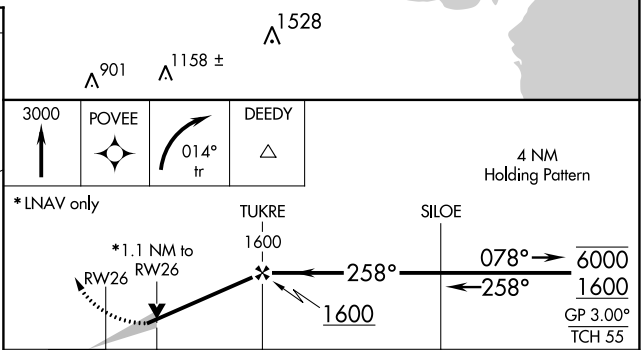
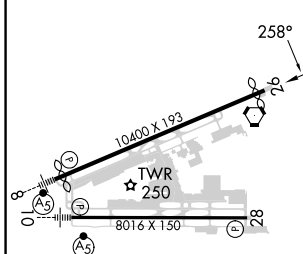
D-ATIS	SAN JUAN APP CON	SAN JUAN TOWER	GND CON	CLNC DEL	CPDLC
125.8	119.4 269.2 (WEST & SW) 120.9 290.2 (NORTH & EAST)	132.05 257.8	121.9 348.6	126.4 284.6	



SE-3, 11 JUL 2024 to 08 AUG 2024

SE-3, 11 JUL 2024 to 08 AUG 2024

ELEV 10	D	TDZE 7
---------	----------	--------



CATEGORY	A	B	C	D
LNAV/VNAV DA	384-1¼ 377 (400-1¼)			
LNAV MDA	400-1	393 (400-1)	400-1½ 393 (400-1½)	400-1¼ 393 (400-1¼)
C CIRCLING	600-1	590 (600-1)	740-2 730 (800-2)	920-3 910 (1000-3)

REIL Rwy 26
 HIRL Rwy 8-26 and 10-28