

VORTAC SJU 114.0 Chan 87	APP CRS 082°	Rwy Idg TDZE Apt Elev	8016 10 10
--	------------------------	-----------------------------	---------------------------------------

VOR or TACAN RWY 10

LUIS MUNOZ MARIN INTL (SJU)(TJSJ)

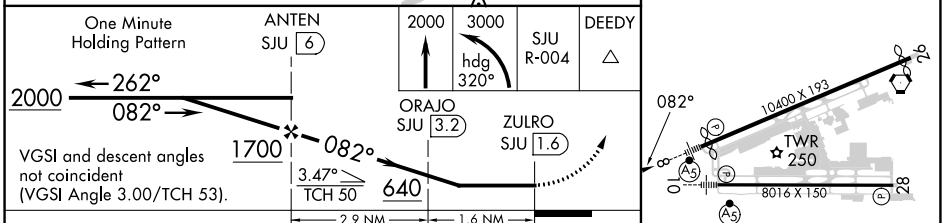
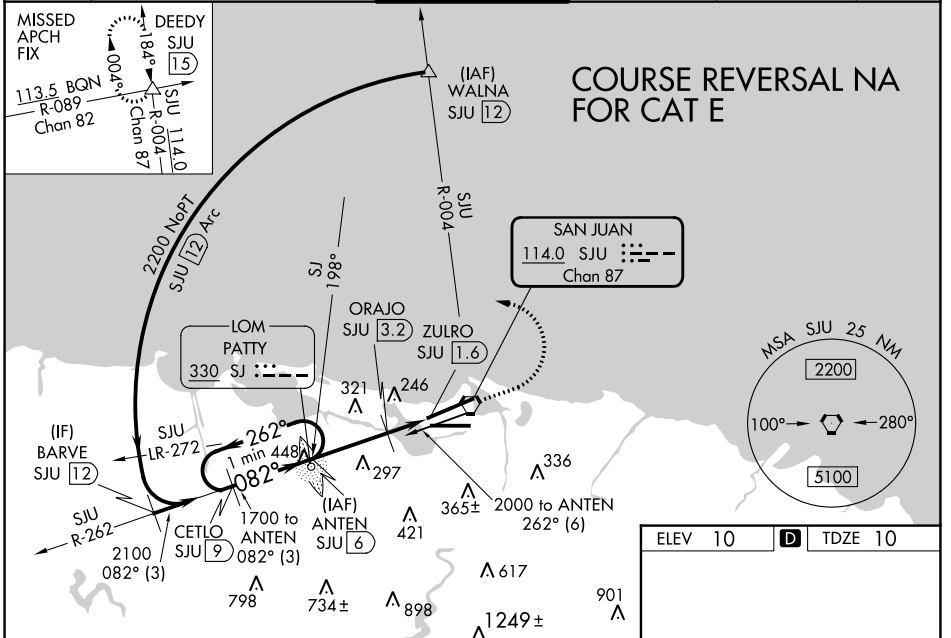
ADF or DME required.

⚠ Straight-in Rwy 10 NA at night, operational VGSI required, remain on or above VGSI glidepath until threshold. Circling NA for Cat E south of Rwy 10-28. Inop table does not apply to S-10 Cats A, B and ORAJO fix minimums S-10 Cats A, B. For inop ALS, increase S-10 Cats C/D/E visibility to 1¼ SM; increase ORAJO fix minimums S-10 Cats C/D/E visibility to 1¼ SM. Rwy 10 helicopter visibility reduction below 1 SM NA.

MALSR

MISSED APPROACH: Climb to 2000 then climbing left turn to 3000 on heading 320° and SJU VORTAC R-004 to DEEDY INT/15 DME and hold.

D-ATIS 125.8	SAN JUAN APP CON 119.4 269.2 (WEST & SW) 120.9 290.2 (NORTH & EAST)	SAN JUAN TOWER 132.05 257.8	GND CON 121.9 348.6	CLNC DEL 126.4 284.6	CPDLC
------------------------	---	---------------------------------------	-------------------------------	--------------------------------	-------



CATEGORY	A	B	C	D	E
S-10	640-1	630 (700-1)	640-1¾	630 (700-1¾)	
CIRCLING	640-1	630 (700-1)	740-2 730 (800-2)	920-3	910 (1000-3)
ORAJO FIX MINIMUMS (DME REQUIRED)					
S-10	500-1 490 (500-1)				
CIRCLING	600-1	590 (600-1)	740-2 730 (800-2)	920-3	910 (1000-3)

REIL Rwy 26
HIRL Rwy 8-26 and 10-28

FAF to MAP 4.5 NM

Knots	60	90	120	150	180
Min:Seq	4:30	3:00	2:15	1:48	1:30

SE-3, 11 JUL 2024 to 08 AUG 2024

SE-3, 11 JUL 2024 to 08 AUG 2024