

LOC I-VCV 108.75	APP CRS 166°	Rwy Idg TDZE Apt Elev	13052 2830 2885
----------------------------	------------------------	-----------------------------	--

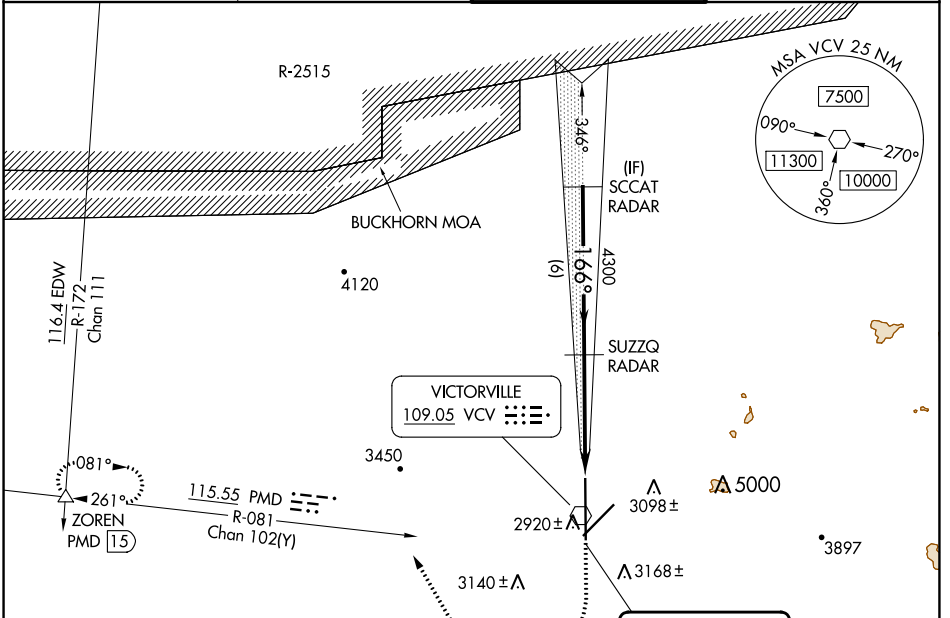
LOC RWY 17
SOUTHERN CALIFORNIA LOGISTICS (VCV)

RADAR required.

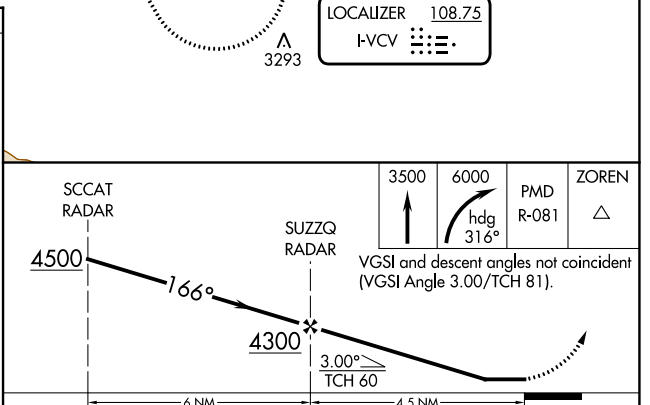
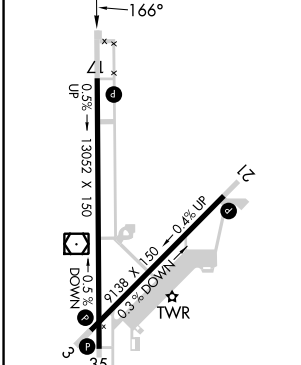
⚠ Circling NA for Cats C and D southeast of Rwy 35 and 21. When local altimeter setting not received use Edwards AFB altimeter setting and increase all MDAs 160 feet, and Circling visibility Cat C ½ SM.

MISSED APPROACH: Climb to 3500 on 166° then climbing right turn to 6000 on heading 316° and on PMD VORTAC R-081 to ZOREN INT/PMD 15 DME and hold.

ATIS ★ 135.475	JOSHUA APP CON 124.55 363.0	VICTORVILLE TOWER ★ 118.35(CTAF) 282.225	GND CON 124.45
--------------------------	---------------------------------------	--	--------------------------



ELEV 2885	D	TDZE 2830
-----------	----------	-----------



REIL Rwy 17 and 35 HIRL Rwy 3-21 and 17-35					
FAF to MAP 4.5 NM					
Knots	60	90	120	150	180
Min:Sec	4:30	3:00	2:15	1:48	1:30
CATEGORY	A	B	C	D	
S-LOC 17	3180/55 350 (300-1)				
CIRCLING	3380-1 495 (500-1)	3420-1 535 (600-1)	3460-1½ 575 (600-1½)	3780-3 895 (900-3)	

SW-3, 11 JUL 2024 to 08 AUG 2024

SW-3, 11 JUL 2024 to 08 AUG 2024