


LOC/DME I-JEF 110.5 Chan 42	APP CRS 300°	Rwy Idg TDZE Apt Elev	6000 549 549
---	------------------------	-----------------------------	---

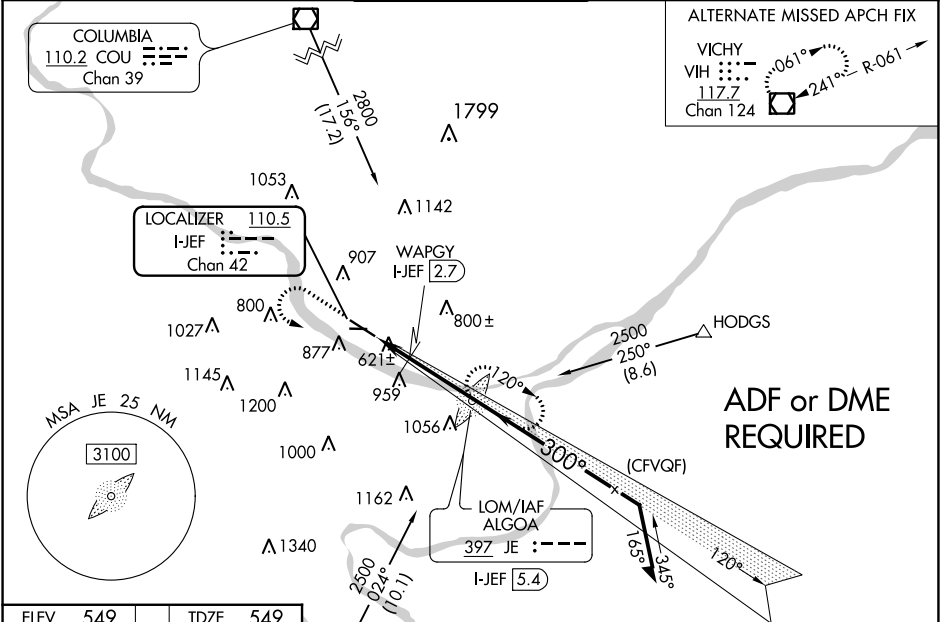
ILS or LOC RWY 30

JEFFERSON CITY MEML (JEF)

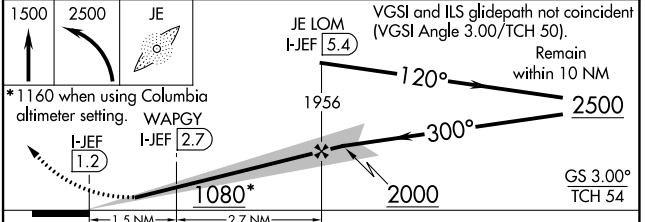
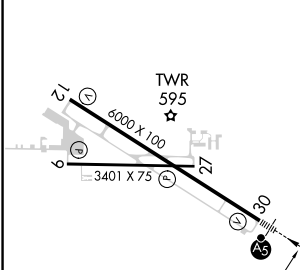
ADF required. When local altimeter setting not received, use Columbia altimeter setting and increase all DA/MDA 80 feet, and increase S-LOC 30 visibility Cats C/D 3/4 SM and increase S-LOC 30 WAPGY fix minimums visibility and Circling Cats A/B/C 1/4 SM. VDP NA with Columbia altimeter setting. For inop ALS when using Columbia altimeter setting, increase S-ILS 30 visibility all Cats to 3/4 SM and S-LOC 30 visibility Cats C/D to 1 3/4 SM and S-LOC 30 WAPGY fix minimums, visibility Cats C/D to 1 1/4 SM. Circling Rwy 9 NA at night.



MALSR  **MISSED APPROACH:** Climb to 1500 then climbing left turn to 2500 direct ALGOA LOM and hold.



ASOS 133.625	MIZU APP CON 124.375 353.925	JEFFERSON CITY TOWER* 125.6 (CTAF) 	GND CON 121.7	UNICOM 122.95
------------------------	--	--	-------------------------	-------------------------



ELEV 549	TDZE 549
-----------------	-----------------



CATEGORY	A	B	C	D
S-ILS 30	749-1/2		200 (200-1/2)	
S-LOC 30	1080-1/2	531 (600-1/2)	1080-1	531 (600-1)
 CIRCLING	1320-1	771 (800-1)	1320-2 1/4 771 (800-2 1/4)	1560-3 1011 (1100-3)
WAPGY FIX MINIMUMS				
S-LOC 30	880-1/2		331 (400-1/2)	
 CIRCLING	1320-1	771 (800-1)	1320-2 1/4 771 (800-2 1/4)	1560-3 1011 (1100-3)

HIRL Rwy 12-30 
MIRL Rwy 9-27
REIL Rwy 9, 12, and 27 

NC-3, 11 JUL 2024 to 08 AUG 2024

NC-3, 11 JUL 2024 to 08 AUG 2024