

PARIS, TEXAS

AL-803 (FAA)

23054

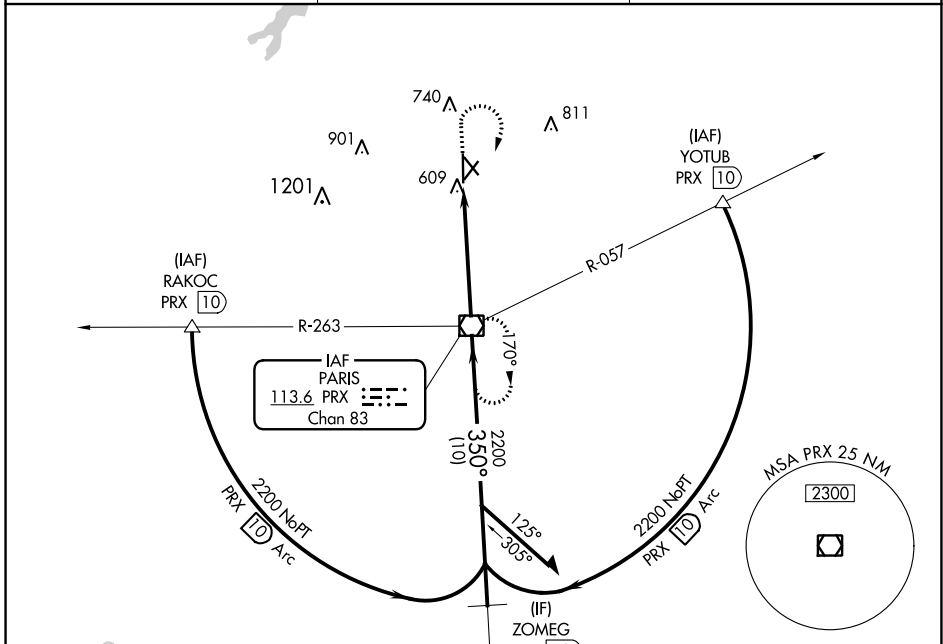
VOR/DME PRX <b>113.6</b> Chan <b>83</b>	APP CRS <b>350°</b>	Rwy Idg TDZE Apt Elev	<b>6002</b> <b>532</b> <b>548</b>
---	------------------------	-----------------------------	---

# VOR RWY 35

COX FLD (PRX)

**▼** Rwy 35 helicopter visibility reduction below 3/4 SM NA.  
**▲** MISSED APPROACH: Climb to 2000 then climbing right turn to 2300 direct PRX VOR/DME and hold.

AWOS-3PT <b>119.675</b>	FORT WORTH CENTER <b>124.875</b>	UNICOM <b>122.975 (CTAF)</b>
----------------------------	-------------------------------------	---------------------------------

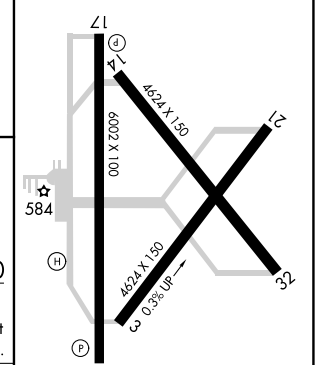
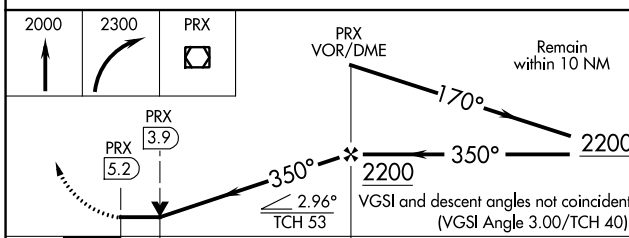


SC-2, 11 JUL 2024 to 08 AUG 2024

SC-2, 11 JUL 2024 to 08 AUG 2024



ELEV 548	<b>D</b> TDZE 532
----------	-------------------



CATEGORY	A	B	C	D
S-35	960-1	428 (500-1)	960-1 1/4	428 (500-1 1/4)
CIRCLING	1060-1	512 (600-1)	1100-1 1/2	1220-2 1/4
			552 (600-1 1/2)	672 (700-2 1/4)

FAF to MAP 5.2 NM					
Knots	60	90	120	150	180
Min:Sec	5:12	3:28	2:36	2:05	1:44

PARIS, TEXAS  
Amdt 2C 23FEB23

33°38'N-95°27'W

# COX FLD (PRX) VOR RWY 35