

LOC I-FND 111.7	APP CRS 155°	Rwy Idg TDZE Apt Elev	8301 138 143
---------------------------	------------------------	-----------------------------	---

BALTIMORE/
WASHINGTON INTL THURGOOD MARSHALL (BWI)

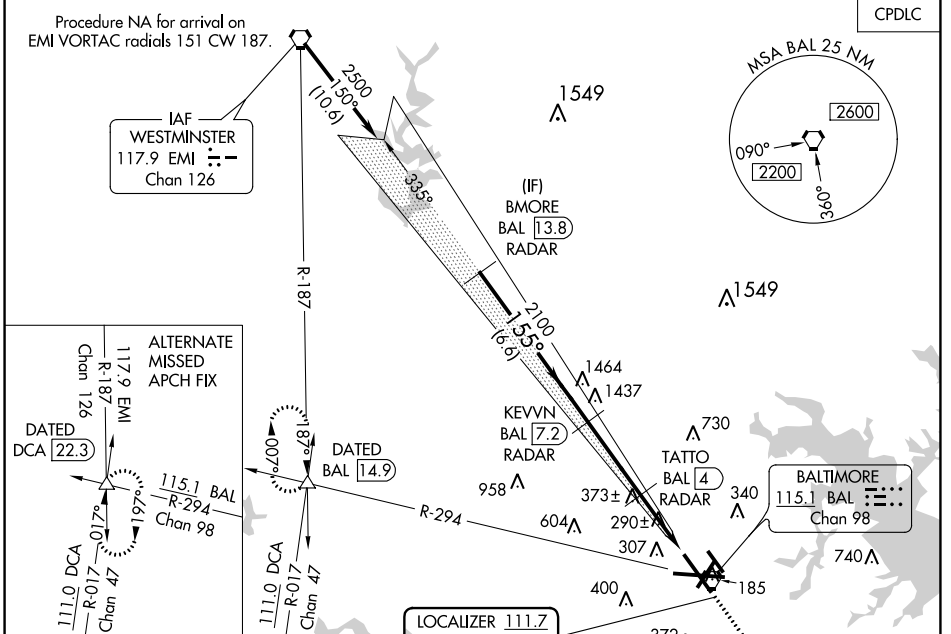
I LS or LOC RWY 15R

⚠ Simultaneous approach authorized with Rwy 15L. DME or Radar required. DME from BAL VORTAC.
RVR 1800 authorized with use of FD or AP or HUD to DA.

MALS/R
AS

MISSED APPROACH: Climb to 900 then climbing right turn to 2600 on BAL VORTAC R-294 to DATED INT/BAL 14.9 DME and hold.

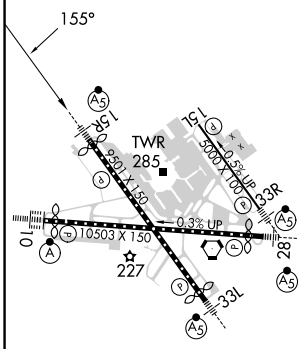
D-ATIS 115.1 127.8	POTOMAC APP CON (020°-100°) 119.7 290.475 (131°-180°) (101°-130°) 128.7 307.9 (181°-019°)	BALTIMORE TOWER 119.4 257.8	GND CON 121.9	CLNC DEL 118.05
------------------------------	---	---------------------------------------	-------------------------	---------------------------



NE-3, 11 JUL 2024 to 08 AUG 2024

NE-3, 11 JUL 2024 to 08 AUG 2024

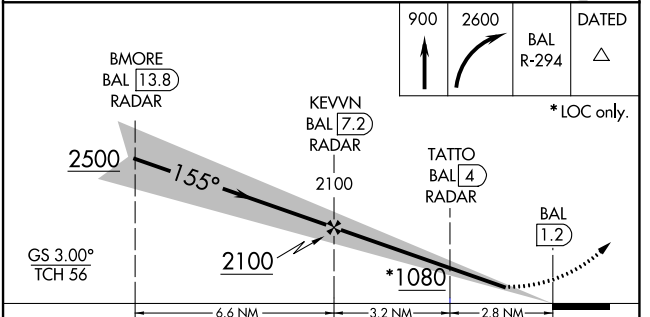
ELEV 143	D	TDZE 138
----------	----------	----------



TDZ/CL Rwy 10 and 33L
 REIL Rwy 15L and 33R
 HIRL all Rwy

FAF to MAP 6 NM

Knots	60	90	120	150	180
Min:Sec	6:00	4:00	3:00	2:24	2:00



CATEGORY	A	B	C	D
S-ILS 15R	#338/24 200 (200-½)			
S-LOC 15R	540/24	402 (400-½)	540/40	402 (400-¾)
C CIRCLING	640-1 497 (500-1)	660-1 517 (600-1)	700-1½ 557 (600-1½)	880-2¼ 737 (800-2¼)