

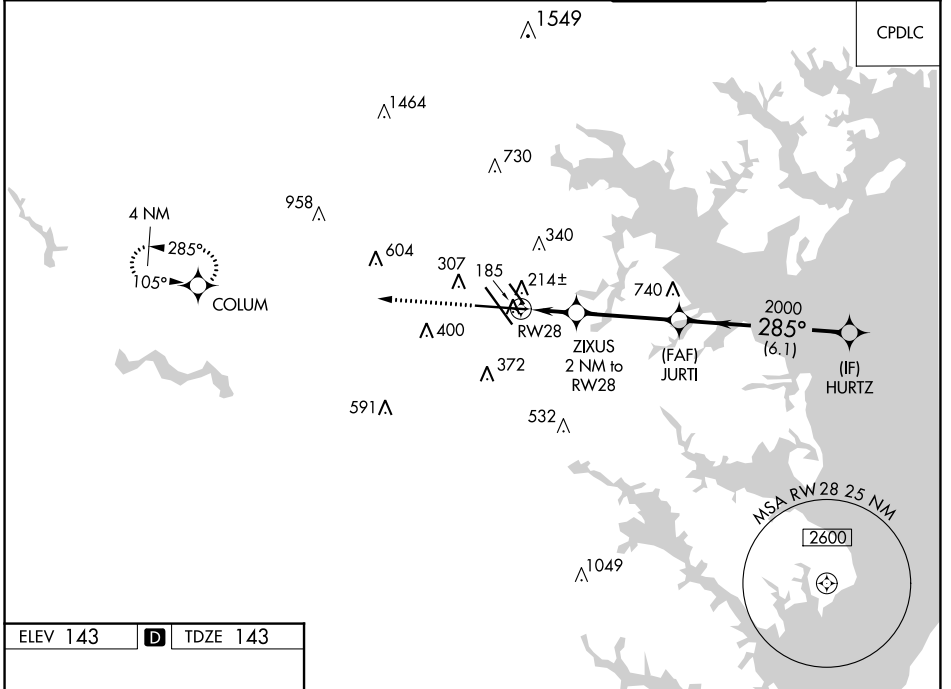
WAAS CH 48808 W28A	APP CRS 285°	Rwy Idg TDZE Apt Elev	9803 143 143
--	------------------------	-----------------------------	---

RNAV (GPS) Y RWY 28

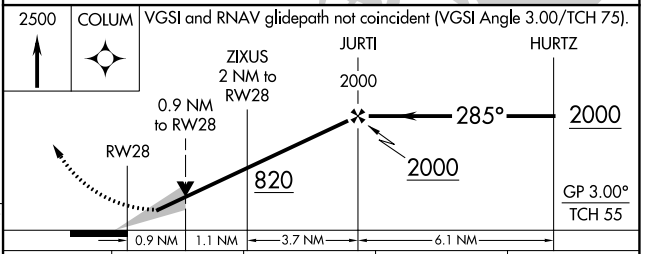
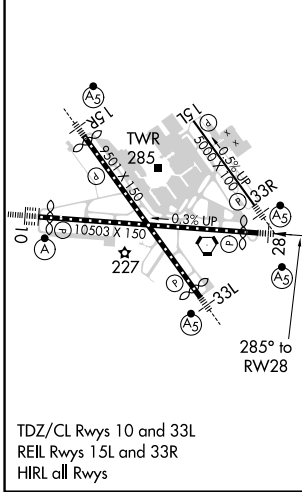
BALTIMORE/WASHINGTON INTL THURGOOD MARSHALL (BWI)

RNP APCH-GPS.		MALSR	MISSED APPROACH: Climb to 2500 direct COLUM and hold.
<p>▼ For uncompensated Baro-VNAV systems, LNAV/VNAV NA below -12°C or above 54°C. For inop ALS, increase LNAV/VNAV all Cats visibility to RVR 4000. ** RVR 1800 authorized with use of FD or AP or HUD to DA.</p>			

D-ATIS 115.1 127.8	POTOMAC APP CON 119.0 282.275 (020°-100°) 124.55 317.425 (101°-130°)	POTOMAC APP CON 119.7 290.475 (131°-180°) 128.7 307.9 (181°-019°)	BALTIMORE TOWER 119.4 257.8	GND CON 121.9	CLNC DEL 118.05
------------------------------	--	---	---------------------------------------	-------------------------	---------------------------



ELEV 143	D	TDZE 143
----------	----------	----------



CATEGORY	A	B	C	D
LPV DA**		343/24	200 (200-½)	
LNAV/VNAV DA		395/24	252 (300-½)	
LNAV MDA	480/24	337 (400-½)	480/26	337 (400-½)
C CIRCLING	640-1 497 (500-1)	660-1 517 (600-1)	700-1½ 557 (600-1½)	860-2¼ 717 (800-2¼)

RNAV (GPS) Y RWY 28

NE-3, 11 JUL 2024 to 08 AUG 2024

NE-3, 11 JUL 2024 to 08 AUG 2024