

VORTAC GGG 112.9 Chan 76	APP CRS 125°	Rwy Idg TDZE Apt Elev	9200 358 366
---------------------------------------	------------------------	-----------------------------	---

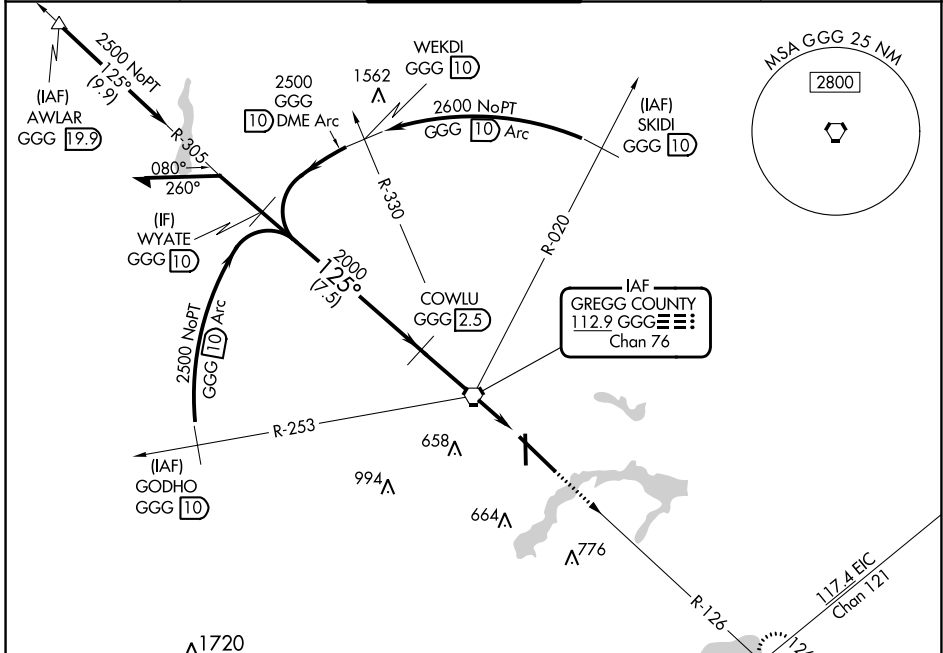
VOR/DME or TACAN RWY 13

EAST TEXAS RGNL (GGG)

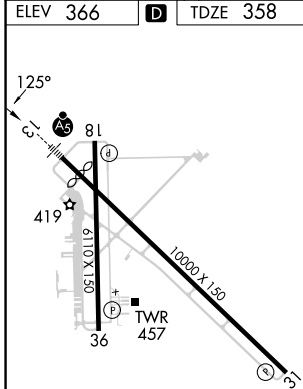
⚠ For inop ALS, increase S-13 Cat C/D/E visibility to 1 $\frac{1}{2}$ SM. When local altimeter setting not received use Gilmer altimeter setting and increase all MDA 60 feet, S-13 and Circling Cats C/D/E visibility $\frac{1}{2}$ SM. VDP NA when using Gilmer altimeter setting. For inop ALS when using Gilmer altimeter setting increase S-13 Cat C/D/E visibility to 1 $\frac{1}{2}$ SM.

MALS MISSED APPROACH: Climb to 3000 via GGG R-126 to ARGEN Int/GGG 14 DME and hold.

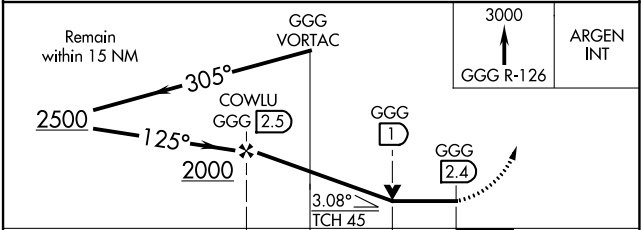
ATIS 119.65	LONGVIEW APP CON* 124.675 257.975	EASTEX TOWER* 119.2 (CTAF) 377.05	GND CON 121.6	UNICOM 122.95
-----------------------	---	---	-------------------------	-------------------------



1720
ELEV 366 **D** TDZE 358



HIRL Rwy 13-31 1
MIRL Rwy 18-36



CATEGORY	A	B	C	D	E
S-13	860/24 502 (500- $\frac{1}{2}$)		860/55 502 (500-1)		860/55 502 (500-1)
CIRCLING	860-1 494 (500-1)		980-1 $\frac{3}{4}$ 614 (700-1 $\frac{3}{4}$)	1080-2 $\frac{1}{4}$ 714 (600-2 $\frac{1}{4}$)	1080-2 $\frac{1}{2}$ 714 (800-2 $\frac{1}{2}$)

SC-2, 11 JUL 2024 to 08 AUG 2024

SC-2, 11 JUL 2024 to 08 AUG 2024