


WAAS CH <b>78101</b> <b>W16A</b>	APP CRS <b>160°</b>	Rwy Idg TDZE Apt Elev	<b>7000</b> <b>682</b> <b>682</b>
--	------------------------	-----------------------------	---

# RNAV (GPS) RWY 16

DRAUGHON-MILLER CENTRAL TEXAS RGNL (TPL)

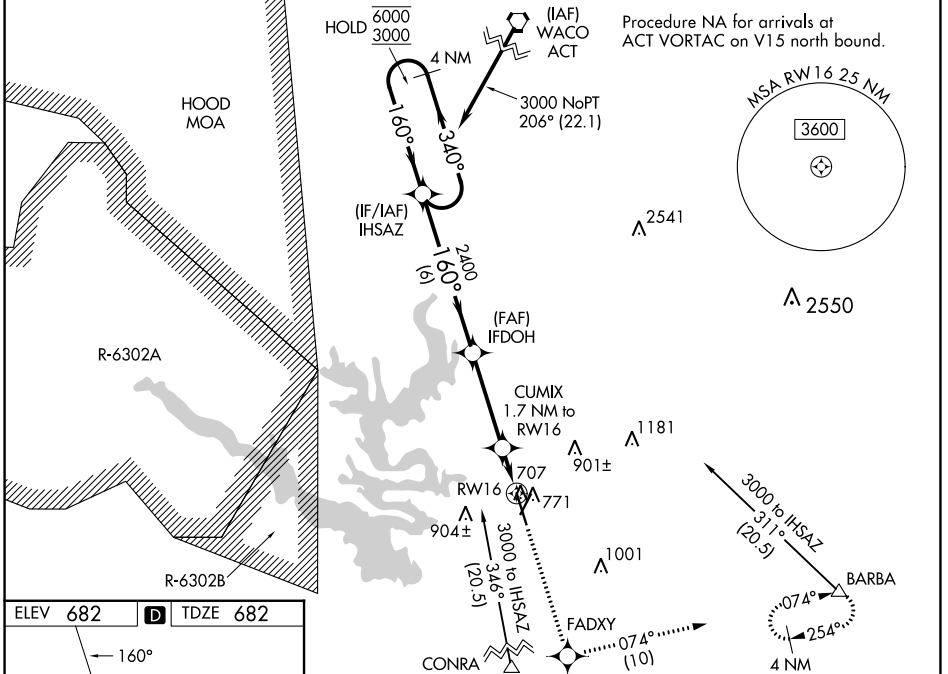
RNP APCH - GPS.

**⚠** For uncompensated Baro-VNAV systems, LNAV/VNAV NA below -16°C or above 54°C. For inop ALS, increase LNAV/VNAV all Cats visibility to ¾ SM and LNAV Cats C/D visibility to ⅞ SM.

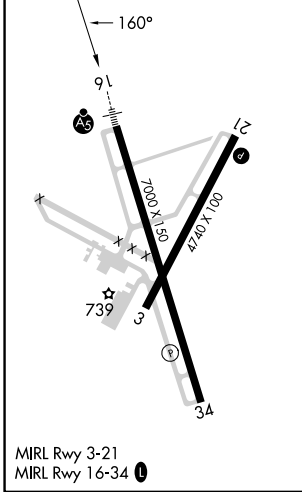
MALSR 

MISSED APPROACH: Climb to 3600 direct FADXY and on track 074° to BARBA and hold, continue climb-in-hold to 3600.

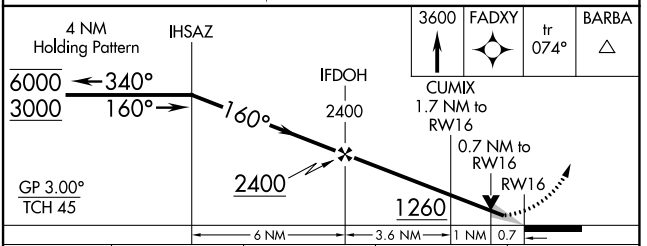
AWOS-3PT <b>134.975</b>	GRAY APP CON <b>120.075 370.0</b>	CLNC DEL <b>125.9</b>	UNICOM <b>123.0</b> (CTAF) <b>📻</b>
----------------------------	--------------------------------------	--------------------------	--



ELEV <b>682</b>	<b>D</b>	TDZE <b>682</b>
-----------------	----------	-----------------



MIRL Rwy 3-21  
MIRL Rwy 16-34 **📻**



CATEGORY	A	B	C	D
LPV DA		882-½	200 (200-½)	
LNAV/VNAV DA		932-½	250 (300-½)	
LNAV MDA		960-½	278 (300-½)	
<b>C</b> CIRCLING	1140-1 458 (500-1)	1200-1 518 (600-1)	1280-1½ 598 (600-1½)	1420-2¼ 738 (800-2¼)

SC-3, 11 JUL 2024 to 08 AUG 2024

SC-3, 11 JUL 2024 to 08 AUG 2024