

WAAS CH 78230 W13A	APP CRS 133°	Rwy Idg TDZE Apt Elev	7257 35 36
--	------------------------	-----------------------------	---------------------------------------

RNAV (GPS) Y RWY 13

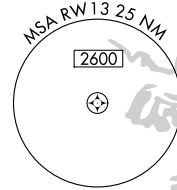
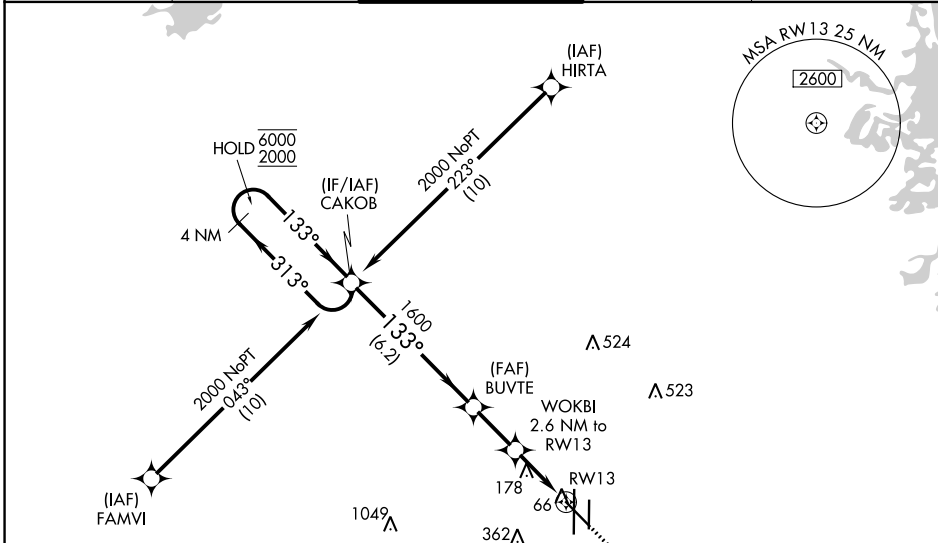
VALLEY INTL (HRL)

RNP APCH - GPS.

⚠ Baro-VNAV and VDP NA when using Port Isabel altimeter setting. For uncompensated Baro-VNAV systems, LNAV/VNAV NA below -1°C or above 54°C. When local altimeter setting not received, use Port Isabel altimeter setting: increase LPV DA to 327 feet and all visibilities 1/8 SM; increase LNAV/VNAV DA to 327 feet and all visibilities 1/8 SM; increase all MDAs 60 feet and visibility Cats C and D 1/4 SM.

MISSED APPROACH:
Climb to 2000 direct AMAPE and hold.

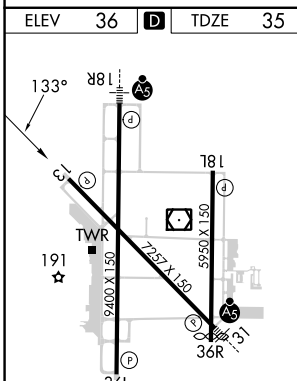
ATIS 124.85	VALLEY APP CON 120.7 279.5	HARLINGEN TOWER ★ 119.3 (CTAF) 0 317.6	GND CON 121.7	UNICOM 122.95
-----------------------	--------------------------------------	--	-------------------------	-------------------------



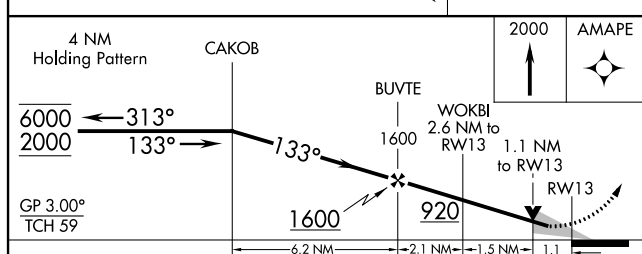
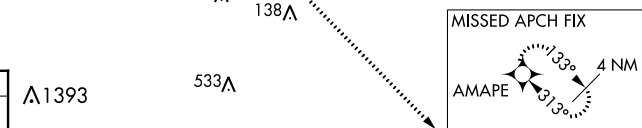
SC-3, 11 JUL 2024 to 08 AUG 2024

SC-3, 11 JUL 2024 to 08 AUG 2024

ELEV 36	D	TDZE 35
---------	----------	---------



MIRL Rwy 18L-36R
REIL Rwys 13 and 18L
HIRL Rwys 13-31 and 18R-36L



CATEGORY	A	B	C	D
LPV DA		285-3/4	250 (300-3/4)	
LNAV/VNAV DA		285-3/4	250 (300-3/4)	
LNAV MDA	440-1	405 (500-1)	440-1 1/8	405 (500-1 1/8)
C CIRCLING	460-1 424 (500-1)	560-1 524 (600-1)	600-1 1/2 564 (600-1 1/2)	680-2 644 (700-2)