

WAAS CH 82530 W31A	APP CRS 313°	Rwy Idg 7257 TDZE 36 Apt Elev 36
--	------------------------	---

RNAV (GPS) Y RWY 31

VALLEY INTL (HRL)

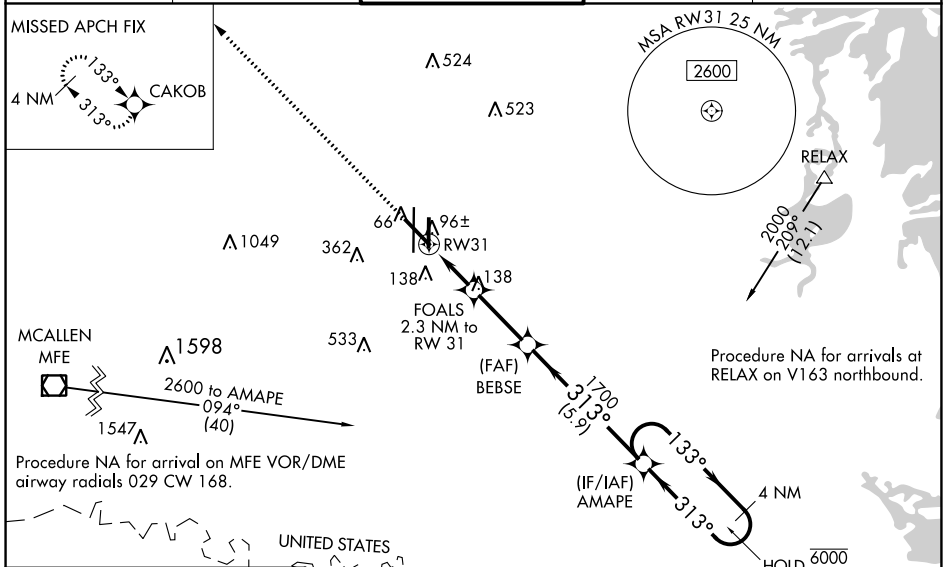
RNP APCH - GPS.

▼ For uncompensated Baro-VNAV systems, LNAV/VNAV NA below -1°C or above 54°C.
 ▲ Baro-VNAV and VDP NA when using Port Isabel altimeter setting. For inop ALS, increase LNAV/VNAV all Cats visibilities to ¾ SM. For inop ALS when using Port Isabel altimeter setting, increase LNAV/VNAV all Cats visibilities to 7/8 SM. When local altimeter setting not received, use Port Isabel altimeter setting; increase LPV DA to 278 feet; increase LNAV/VNAV DA to 328 feet; increase all MDAs 60 feet and LNAV visibility Cats C and D 1/4 SM and Circling visibility Cat C and D 1/4 SM.

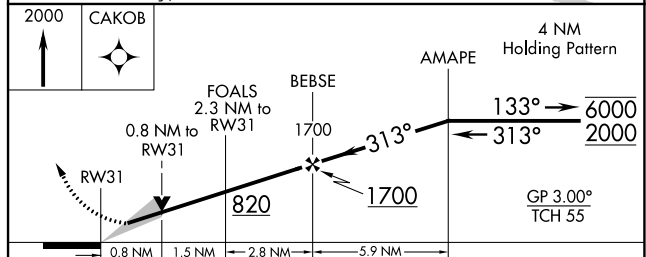
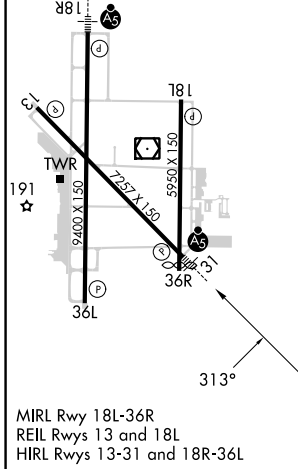


MISSED APPROACH:
Climb to 2000 direct CAKOB and hold.

ATIS 124.85	VALLEY APP CON 120.7 279.5	HARLINGEN TOWER ★ 119.3 (CTAF) 317.6	GND CON 121.7	UNICOM 122.95
-----------------------	--------------------------------------	--	-------------------------	-------------------------



ELEV 36	D	TDZE 36
---------	----------	---------



CATEGORY	A	B	C	D
LPV DA		236-1/2	200 (200-1/2)	
LNAV/VNAV DA		286-1/2	250 (300-1/2)	
LNAV MDA		360-1/2	324 (400-1/2)	
C CIRCLING	460-1	560-1	600-1 1/2	680-2
	424 (500-1)	524 (600-1)	564 (600-1 1/2)	644 (700-2)

SC-3, 11 JUL 2024 to 08 AUG 2024

SC-3, 11 JUL 2024 to 08 AUG 2024